

## Dubai Palm Jebel Ali Ville esclusive fronte mare



### Costi Interventi

Prezzo d'acquisto

Prezzo su richiesta

### Dettagli della proprietà

Area totale

786,43 m<sup>2</sup>

Numero di camere da letto

5

Condizione della proprietà

La prima volta

vecchio / nuovo edificio

Nuova costruzione

Stato di Vendita

Aperto

### Caratteristiche

Categorizzazione generale

Lussuoso

Bagno

Doccia

Cucina

Aperto

Air-conditioned

Sì

Ascensore, ascensore

Persone

furnished

completamente

TV via cavo/satellite

Sì

Caratteristiche di sicurezza

Macchina fotografica

Storage

Sì

anziani

Sì

## Descrizione struttura

Entra in un mondo dove la brillantezza architettonica si fonde con la bellezza della natura. Ogni villa di questa collezione è un capolavoro di design contemporaneo che combina raffinatezza minimalista con un'eleganza senza tempo. I layout spaziosi massimizzano la luce naturale e la vista sul mare, creando un collegamento fluido tra gli spazi interni e l'ambiente costiero sereno. La facciata elegante presenta un profilo geometrico audace, completato da finiture raffinate e materiali di alta qualità. Ampie terrazze e lounge sul tetto offrono panorami mozzafiato, invitando i residenti a rilassarsi con i suoni calmanti del mare.

Gli interni sono progettati per favorire benessere e tranquillità, con spazi aperti, bagni di lusso con totale privacy e cucine su misura per la vita moderna. Le case utilizzano materiali e colori naturali che rafforzano la connessione con l'ambiente costiero. I giardini privati conducono direttamente alle spiagge di sabbia, offrendo uno stile di vita esclusivo fronte mare. Questa collezione attentamente curata garantisce un'esperienza abitativa eccezionale che ispira creatività, pace e comfort ogni giorno.

## Posizione

Situata nel prestigioso quartiere meridionale di Dubai, Palm Jebel Ali offre un'unica combinazione di straordinaria bellezza naturale e comodità urbana. Questa comunità fronte mare vanta la costa più lunga della città, circondata da spiagge di sabbia bianca incontaminata, acque azzurre e rigogliosa vegetazione. A pochi minuti dal vivace centro di Dubai e facilmente collegata dalla Sheikh Zayed Road (E11), i residenti godono di un facile accesso a negozi, ristoranti e intrattenimento di livello mondiale. L'ambiente tranquillo, immerso in paesaggi tropicali, rende questa destinazione ambita da chi cerca un'armonia tra vita cittadina e serenità della natura.

## Caratteristiche

Questo esclusivo quartiere dispone di strade private attentamente progettate, sentieri pedonali e piste ciclabili immersi in una flora vibrante. I residenti possono usufruire di servizi a cinque stelle, tra cui accessi sicuri, ingressi privati alla spiaggia, giardini rigogliosi e ampie terrazze con vista panoramica sul mare. La comunità promuove uno stile di vita attivo con passeggiate ombreggiate e piccoli parchi che favoriscono relax e benessere. Altri punti di forza includono parcheggi riservati, ascensori moderni, sistemi di sicurezza all'avanguardia e spazi abitativi progettati per un perfetto equilibrio tra interno ed esterno, garantendo comfort ed eleganza.

## Altrui

Disclaimer: i piani, i dettagli e l'orientamento dell'unità inclusi sono solo indicativi e possono essere modificati dal sviluppatore/venditore a sua discrezione senza preavviso e/o responsabilità. Tutte le immagini, comprese le caratteristiche, le finiture, l'arredamento, la vista e la scala, sono solo illustrative. Le aree finali, l'orientamento, le dimensioni, la disposizione e i materiali possono differire da quelli indicati.

## Indirizzo

Palm Jebel Ali

## Fornitori

TANAMI PROPERTIES  
Al Marsa Street  
3405 Marina Plaza

Centralino

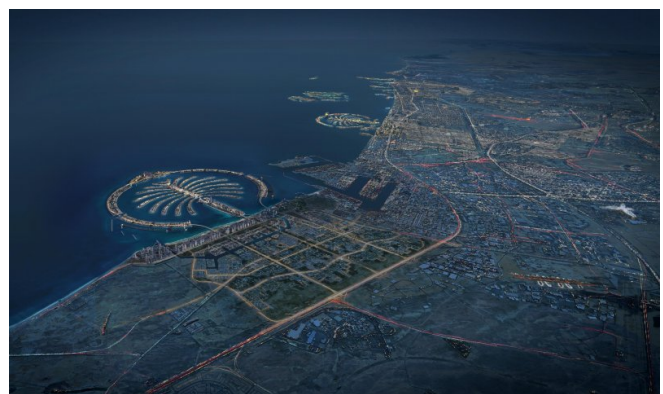
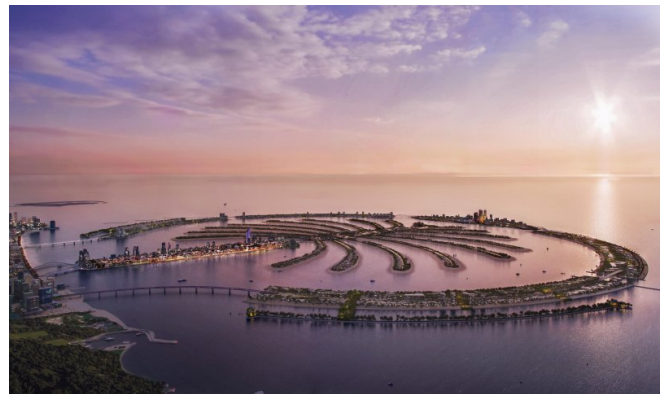
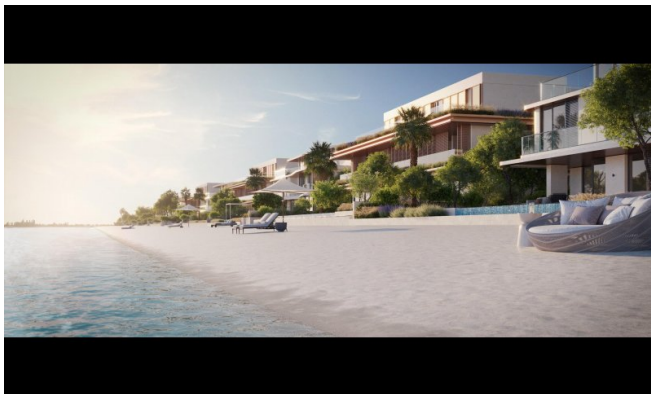
E-Mail

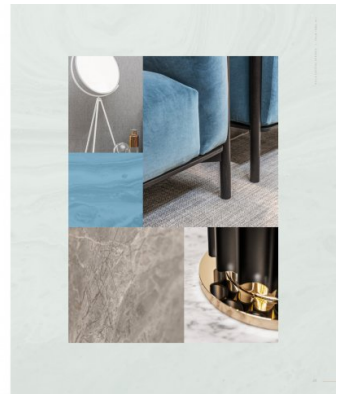
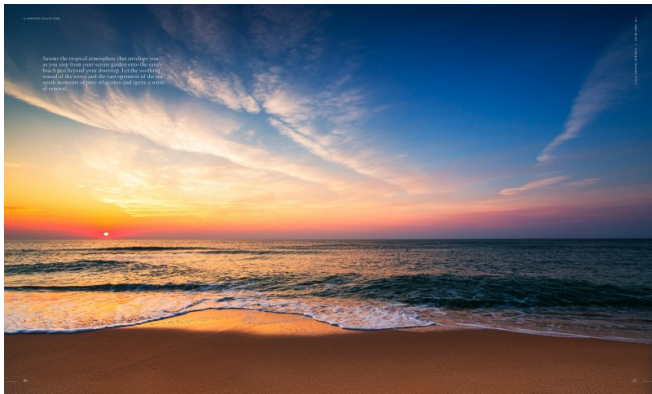
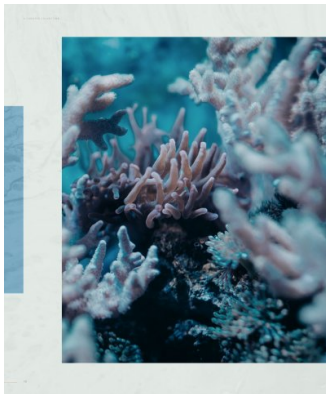
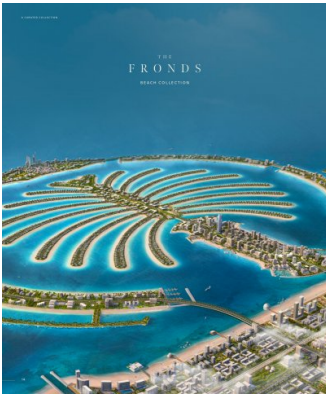
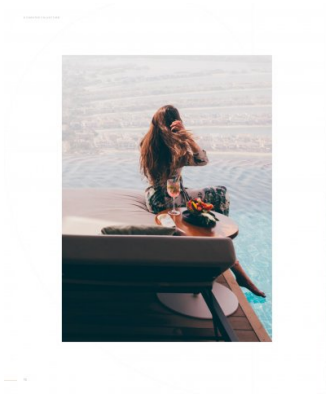
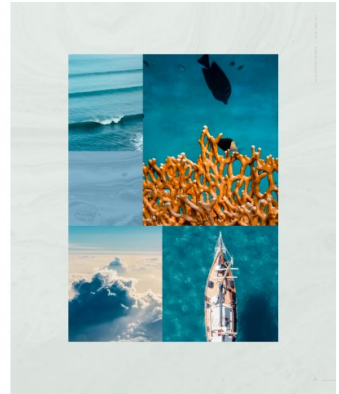
Sito web

+971 4 248 3400

[office@ihr-makler.cc](mailto:office@ihr-makler.cc)

[victoriacrigan@tanamiproperties.ae](mailto:victoriacrigan@tanamiproperties.ae)





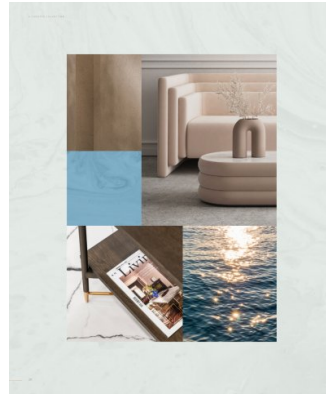
Exceptional design, a breathtaking beachfront location, and the exclusivity of a private neighbourhood, all crafted to impress.

**UNIQUE BEACHFRONT RESIDENCES**

The Beach Collection offers these residences in a prime location, overlooking the sea, with a private beach and a swimming pool. The residences are designed to offer a unique lifestyle, with a private beach and a swimming pool. The residences are designed to offer a unique lifestyle, with a private beach and a swimming pool.

UNIQUE BEACHFRONT RESIDENCES

The Beach Collection offers these residences in a prime location, overlooking the sea, with a private beach and a swimming pool. The residences are designed to offer a unique lifestyle, with a private beach and a swimming pool. The residences are designed to offer a unique lifestyle, with a private beach and a swimming pool.



LIVE IN A MASTERPIECE

OWN A PIECE OF HISTORY

The Unique Beach Villas

The residences are designed to offer a unique lifestyle, with a private beach and a swimming pool. The residences are designed to offer a unique lifestyle, with a private beach and a swimming pool. The residences are designed to offer a unique lifestyle, with a private beach and a swimming pool.

WELCOMING WATERFRONT RESIDENCES

The Unique Beach Villas

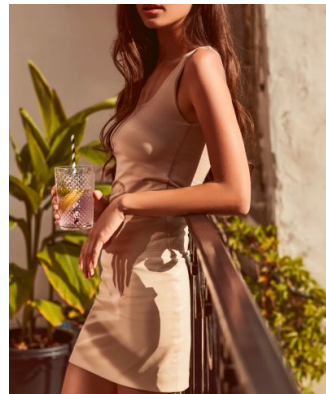
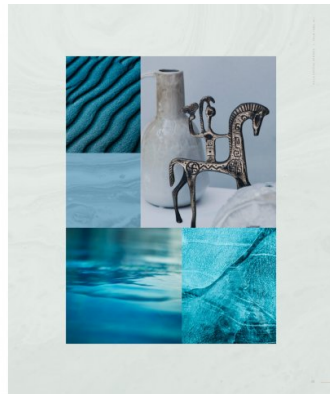
The residences are designed to offer a unique lifestyle, with a private beach and a swimming pool. The residences are designed to offer a unique lifestyle, with a private beach and a swimming pool. The residences are designed to offer a unique lifestyle, with a private beach and a swimming pool.



Located on the exclusive fronds, each residence offers direct access to the beach, nestled within a private neighbourhood that inspires serenity.

**UNIQUE BEACHFRONT RESIDENCES**

The Beach Collection offers these residences in a prime location, overlooking the sea, with a private beach and a swimming pool. The residences are designed to offer a unique lifestyle, with a private beach and a swimming pool. The residences are designed to offer a unique lifestyle, with a private beach and a swimming pool.



CRYSTAL SPRINGS

The Residence Project

The residences are designed to offer a unique lifestyle, with a private beach and a swimming pool. The residences are designed to offer a unique lifestyle, with a private beach and a swimming pool. The residences are designed to offer a unique lifestyle, with a private beach and a swimming pool.

STEP UP TO NEW HEIGHTS OF EXCLUSIVITY

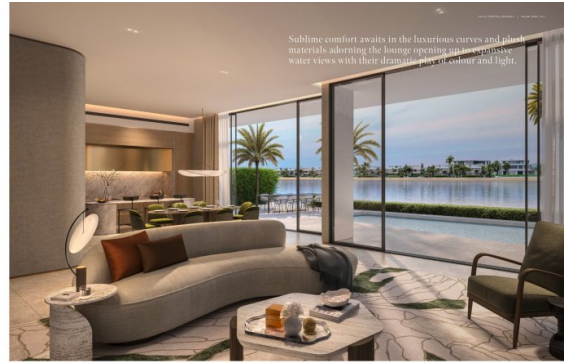
The Unique Beach Villas

The residences are designed to offer a unique lifestyle, with a private beach and a swimming pool. The residences are designed to offer a unique lifestyle, with a private beach and a swimming pool. The residences are designed to offer a unique lifestyle, with a private beach and a swimming pool.





THE BRILLIANT FACADE IS A BEHOLDEN CONCEPT AND TESTAMENT TO THE EFFICIENT DESIGN WHICH MAKES THE RESIDENCE IN THE ZÜRICH PEARL PARK.

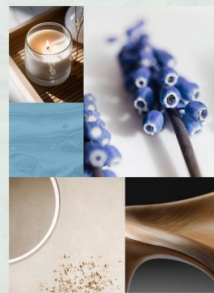


Sublime comfort awaits in the luxurious curves and plush materials adorning the lounge opening up an extensive water views with their dramatic play of colour and light.

This refined residence invites nature indoors with natural materials and seamless indoor-outdoor space.

THE RESIDENCE MATERIALS

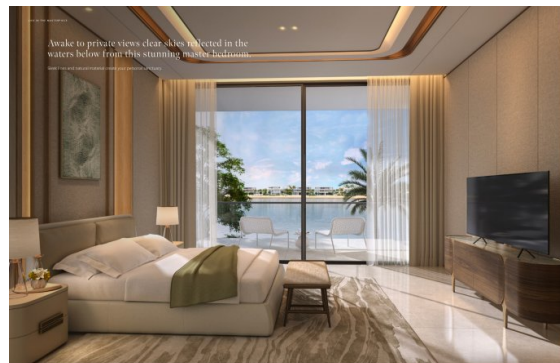
WOODEN PANELS AND STONE WALLS COMPLEMENT THE INTERIOR DESIGN, CREATING A WARM AND INVITING ATMOSPHERE. THE SEAMLESS CONNECTION BETWEEN INDOOR AND OUTDOOR SPACES IS ACHIEVED THROUGH THE USE OF NATURAL MATERIALS AND A COHERENT DESIGN LANGUAGE.



THE CURVED STAIRCASE AND THE WOODEN WALLS ARE A TESTAMENT TO THE EFFICIENT DESIGN WHICH MAKES THE RESIDENCE IN THE ZÜRICH PEARL PARK.



INSPIRED BY THE DESIGN OF THE VILLA, THE INTERIOR DESIGN IS A TESTAMENT TO THE EFFICIENT DESIGN WHICH MAKES THE RESIDENCE IN THE ZÜRICH PEARL PARK.



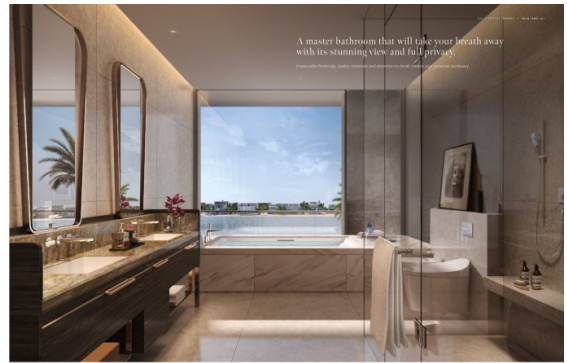
Awake to private views clear skies reflected in the waters below from this stunning master bedroom.



Live beyond expectations in this minimalist designed villa where intricate details create the difference.

A HOME THAT INSPIRES WELLNESS

THE VILLA'S DESIGN IS A TESTAMENT TO THE EFFICIENT DESIGN WHICH MAKES THE RESIDENCE IN THE ZÜRICH PEARL PARK.



A master bathroom that will take your breath away with its stunning view and full privacy.



BEACH HILLS COLLECTION

VILLA  
CRYSTAL SPRINGS

3 BEDROOMS, FAMILY ROOM  
3 POOL, LOGGIA AND TERRACE

| PRICE PER SQM |                 |
|---------------|-----------------|
| Ground Floor  | 148.00 - 149.00 |
| Second Floor  | 150.00 - 151.00 |
| Third Floor   | 152.00 - 153.00 |
| Pool Area     | 154.00 - 155.00 |
| Loggia        | 156.00 - 157.00 |
| Terrace       | 158.00 - 159.00 |
| Garage        | 160.00 - 161.00 |
| Plot Area     | 162.00 - 163.00 |
| Construction  | 164.00 - 165.00 |
| Landscaping   | 166.00 - 167.00 |
| Other         | 168.00 - 169.00 |
| Total Price   | 170.00 - 171.00 |

