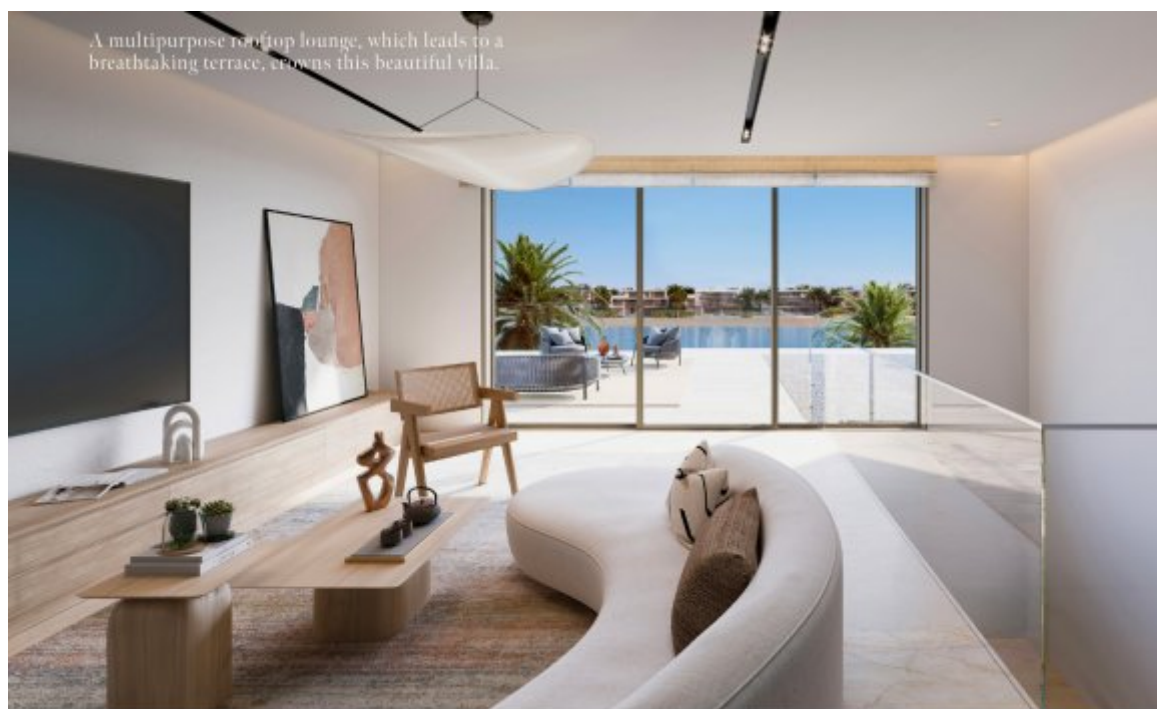


Dubai Palm Jebel Ali Luksuzne vile uz plažu



Cijene i troškovi

Nabavna cijena

Cijena na upit

Podaci o nekretnini

Ukupna površina

678,91 m²

spavaće sobe

6

Stanje nekretnine

Prvo korištenje

stara/nova zgrada

Nova zgrada

Status prodaje

otvoren

Značajke

Opća kategorizacija

Luksuzan

Kupaonica

Tuš

Kuhinja

Otvoren

Klimatizirano

Da

Lift

Osobe

namješteno

potpuno

Kabelska/satelitska TV

Da

Sigurnosne značajke

Fotoaparat

Skladištenje

Da

prilagođen starijim osobama

Da

Opis nekretnine

Živite u arhitektonskom remek-djelu gdje se suvremeni dizajn susreće s prirodnom ljepotom. Svaka vila u ovoj ekskluzivnoj kolekciji pažljivo je dizajnirana s hrabrim geometrijskim pročeljima i elegantnim završnim obradama koje podižu iskustvo obalnog života na novu razinu. Prostrani tlocrt maksimalno koristi prirodno svjetlo i uokviruje zadivljujuće poglede na more, stvarajući besprijekoran prijelaz između unutarnje udobnosti i vanjskog mira.

Užite u svijetle, otvorene životne prostore koji spajaju luksuz i dobrobit, s prozorima od poda do stropa, profinjenim materijalima i pažljivo dizajniranim privatnim dvorištima. Moderne kuhinje i sofisticirane blagovaonice obogaćuju svakodnevni život, dok prostrane terase i salon na krovu nude zapanjujuća mjesta za opuštanje i zabavu na otvorenom.

Ovaj mirni dom poziva vas da se opustite uz umirujuć zvuk valova odmah pred vašim vratima, gdje bujni vrtovi vode izravno na netaknute plaže. Dizajn uključuje tradicionalne elemente inspirirane lokalnom arhitekturom i arapskim ekranima, u kombinaciji s modernim staklenim površinama koje uokviruju spektakularne obalne panorame.

Svaki detalj odražava predanost izvrsnosti - od prilagođenih stepenica i višefunkcionalnih prostora na krovu do skladne povezanosti s prirodom. Smještene na privatnim područjima unutar zajednice, ove vile nude ekskluzivan pristup plaži i životni stil ispunjen elegancijom i inspiracijom.

Mjesto

Smješten u prestižnoj južnoj gradskoj četvrti Dubaija, Palm Jebel Ali ima najdužu obalu u gradu s netaknutim bijelim pješčanim plažama i azurno plavim morem. Nekoliko minuta udaljen od centra Dubaija i lako dostupan putem Sheikh Zayed ceste (E11), kombinira mirnu prirodnu ljepotu s gradskom udobnošću. Živahna četvrt nudi bujne zelene površine, mirne privatne enklave i izravan pristup plaži. Ova ekskluzivna priobalna zajednica nudi savršen balans između mirnog obalnog života i blizine svjetski poznatih trgovina, restorana i zabavnih centara.

Značajke

Ova pažljivo dizajnirana priobalna zajednica sadrži privatne ulice okružene bujnim zelenilom, pješačke i biciklističke staze koje potiču aktivan životni stil. Stanovnici uživaju u petozvezdastim pogodnostima, uključujući osigurane ulaze, privatne pristupe plaži, uređene vrtove i prostrane terase s panoramskim pogledom na more. Vile su opremljene modernim liftovima, namjenskim parkirnim mjestima s natkrivenim garažama i pergolama, naprednim sigurnosnim sustavima i besprijekornim unutarnjim i vanjskim prostorima za život. Pažljivo dizajnirani zajednički prostori stvaraju mirno i luksuzno okruženje gdje se udobnost i elegancija skladno povezuju.

Drugi

Odricanje odgovornosti: Planovi, detalji i orijentacija jedinica uključeni su samo kao indicija i mogu se mijenjati od strane developera/prodavca prema vlastitom nahođenju bez prethodne obavijesti i/ili odgovornosti. Sve slike, uključujući karakteristike, završne obrade, namještaj, pogled i mjerilo, samo su ilustrativne. Konačni prostori, orijentacija, dimenzije, raspored i materijali mogu se razlikovati od navedenih.

Adresa

Palm Jebel Ali

Dobavlja?

TANAMI PROPERTIES
Al Marsa Street
3405 Marina Plaza

Telefon glavni ured

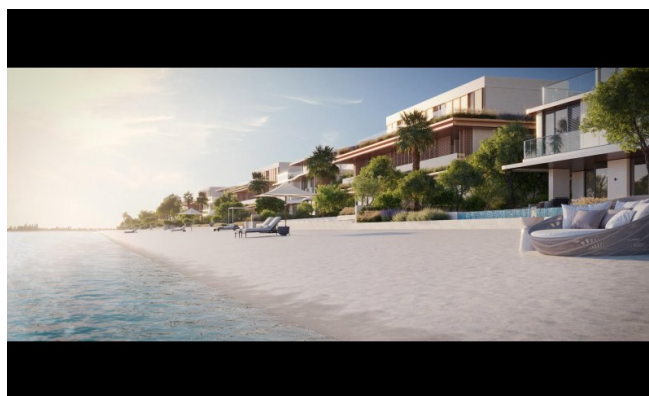
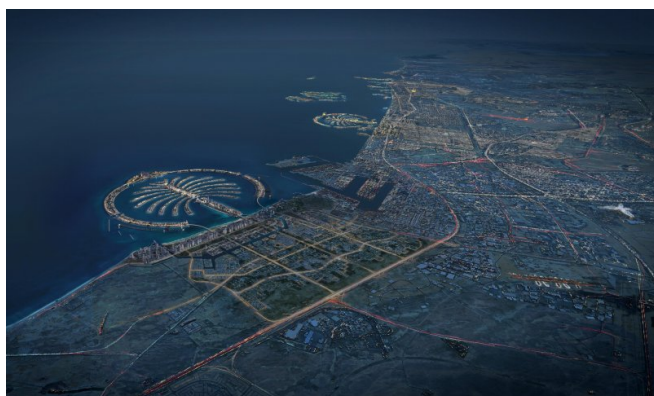
+971 4 248 3400

E-pošta

office@ihr-makler.cc

Web stranica

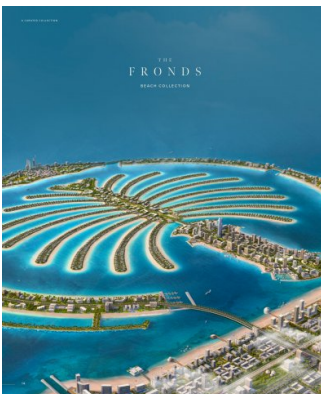
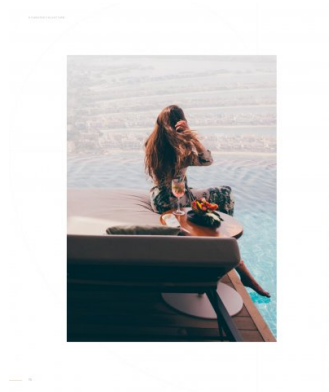
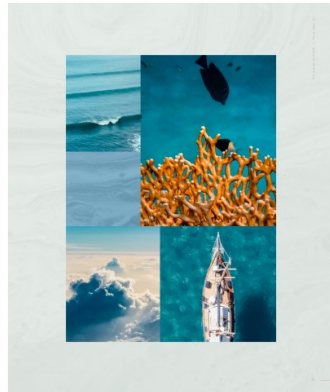
victoriacrigan@tanamiproperties.ae





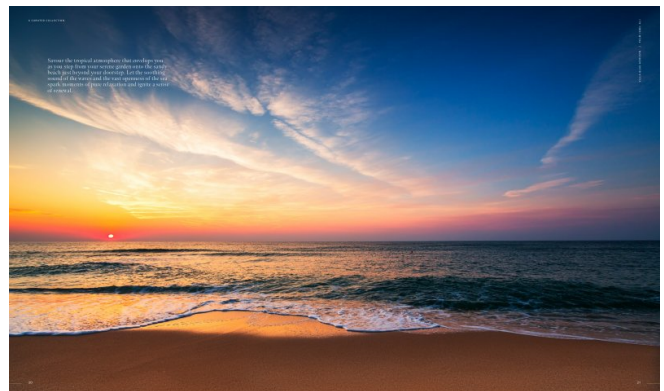
Live a life of inspiration, serenity, and comfort in Dubai's most coveted district—a vibrant blend of lush greenery, azure waters, and pristine white sands.

Look forward to an extraordinary experience whenever you visit Dubai. The city is a vibrant blend of lush greenery, azure waters, and pristine white sands. The city is a vibrant blend of lush greenery, azure waters, and pristine white sands. The city is a vibrant blend of lush greenery, azure waters, and pristine white sands.



AN ICONIC NEIGHBOURHOOD

THE FRONDS is a collection of modern, sustainable homes designed to offer a unique living experience. The development is a vibrant blend of lush greenery, azure waters, and pristine white sands. The city is a vibrant blend of lush greenery, azure waters, and pristine white sands.



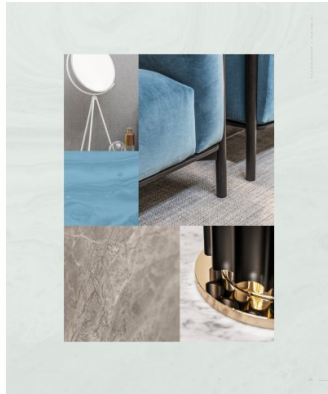


EXCEPTIONAL DESIGN, A BREATHTAKING BEACHFRONT LOCATION, AND THE EXCLUSIVITY OF A PRIVATE NEIGHBOURHOOD, ALL CRAFTED TO IMPRESS.

CRAFTED WITH CARE

EXCEPTIONAL DESIGN, A BREATHTAKING BEACHFRONT LOCATION, AND THE EXCLUSIVITY OF A PRIVATE NEIGHBOURHOOD, ALL CRAFTED TO IMPRESS.

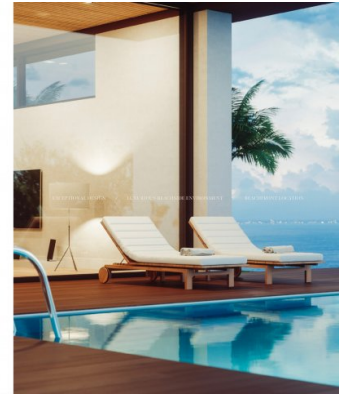
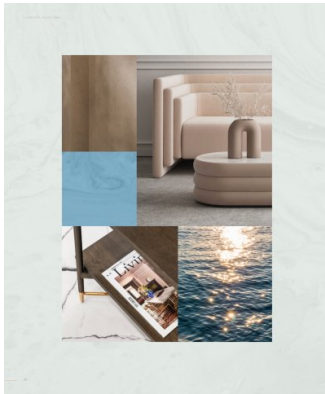
A residence thoughtfully designed and crafted to provide a truly unique experience, offering a lifestyle of exceptional quality and exclusivity. The perfect place for your next vacation or permanent residence.



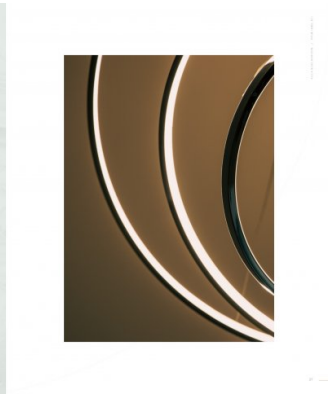
EXCEPTIONAL DESIGN, A BREATHTAKING BEACHFRONT LOCATION, AND THE EXCLUSIVITY OF A PRIVATE NEIGHBOURHOOD, ALL CRAFTED TO IMPRESS.

EXCEPTIONAL DESIGN, A BREATHTAKING BEACHFRONT LOCATION, AND THE EXCLUSIVITY OF A PRIVATE NEIGHBOURHOOD, ALL CRAFTED TO IMPRESS.

EXCEPTIONAL DESIGN, A BREATHTAKING BEACHFRONT LOCATION, AND THE EXCLUSIVITY OF A PRIVATE NEIGHBOURHOOD, ALL CRAFTED TO IMPRESS.

EXCEPTIONAL DESIGN, A BREATHTAKING BEACHFRONT LOCATION, AND THE EXCLUSIVITY OF A PRIVATE NEIGHBOURHOOD, ALL CRAFTED TO IMPRESS.



OWN A PIECE OF HISTORY

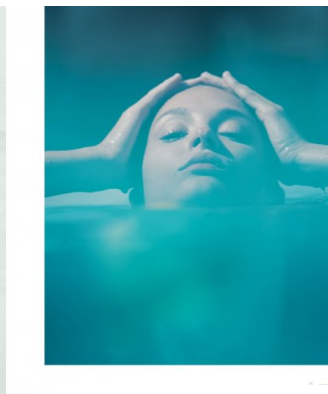
LIVE IN A MASTERPIECE

THE LINGER BACH VILLA

EXCEPTIONAL DESIGN, A BREATHTAKING BEACHFRONT LOCATION, AND THE EXCLUSIVITY OF A PRIVATE NEIGHBOURHOOD, ALL CRAFTED TO IMPRESS.

WELCOMING WATERFRONT RESIDENCES

EXCEPTIONAL DESIGN, A BREATHTAKING BEACHFRONT LOCATION, AND THE EXCLUSIVITY OF A PRIVATE NEIGHBOURHOOD, ALL CRAFTED TO IMPRESS.



Located on the exclusive fronts, each residence offers direct access to the beach, nestled within a private neighbourhood that inspires serenity.

EXCEPTIONAL DESIGN, A BREATHTAKING BEACHFRONT LOCATION, AND THE EXCLUSIVITY OF A PRIVATE NEIGHBOURHOOD, ALL CRAFTED TO IMPRESS.



EXCEPTIONAL DESIGN, A BREATHTAKING BEACHFRONT LOCATION, AND THE EXCLUSIVITY OF A PRIVATE NEIGHBOURHOOD, ALL CRAFTED TO IMPRESS.

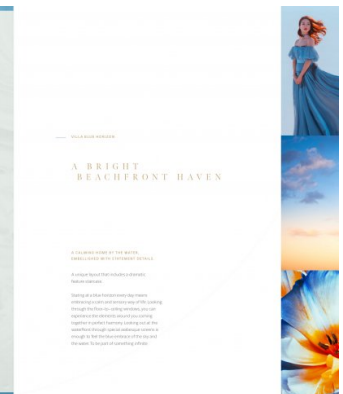


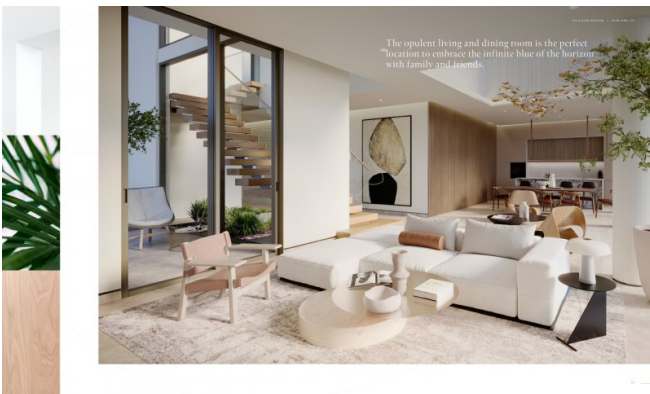
VILLA BLUE HORIZON

EXCEPTIONAL DESIGN, A BREATHTAKING BEACHFRONT LOCATION, AND THE EXCLUSIVITY OF A PRIVATE NEIGHBOURHOOD, ALL CRAFTED TO IMPRESS.

A BRIGHT BEACHFRONT HAVEN

EXCEPTIONAL DESIGN, A BREATHTAKING BEACHFRONT LOCATION, AND THE EXCLUSIVITY OF A PRIVATE NEIGHBOURHOOD, ALL CRAFTED TO IMPRESS.







Each space has been designed to enhance your daily life. Delicate details and fine finishes complete this magnificent home.

4. SENSITIVE ENVIRONMENT

Placed within the gentle hills of Zirl, this house is built on a hillside overlooking the town. The house is designed to be in perfect harmony with the environment outside.



Every morning starts with your wellbeing rituals right here in this nature-inspired sanctuary, where natural materials are harnessed to be in perfect harmony with the environment outside.



BEACH HILLS COLLECTION

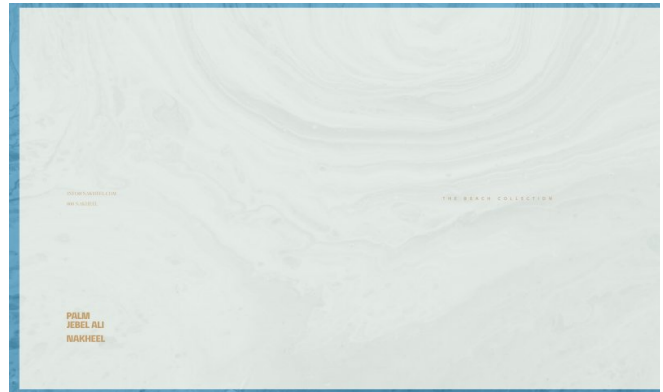
VILLA

BLUE HORIZON

0-1

3 BEDROOMS + FAMILY ROOM
POOL TERRACE AND TERRACE

PROPERTY	PRICE
Blue Horizon	798.000
Blue Horizon 02	798.000
Blue Horizon 03	798.000
Blue Horizon 04	798.000
Blue Horizon 05	798.000
Blue Horizon 06	798.000
Blue Horizon 07	798.000
Blue Horizon 08	798.000
Blue Horizon 09	798.000
Blue Horizon 10	798.000
Blue Horizon 11	798.000
Blue Horizon 12	798.000
Blue Horizon 13	798.000
Blue Horizon 14	798.000
Blue Horizon 15	798.000
Blue Horizon 16	798.000
Blue Horizon 17	798.000
Blue Horizon 18	798.000
Blue Horizon 19	798.000
Blue Horizon 20	798.000
Blue Horizon 21	798.000
Blue Horizon 22	798.000
Blue Horizon 23	798.000
Blue Horizon 24	798.000
Blue Horizon 25	798.000
Blue Horizon 26	798.000
Blue Horizon 27	798.000
Blue Horizon 28	798.000
Blue Horizon 29	798.000
Blue Horizon 30	798.000



THE BEACH COLLECTION

PILAR JEBEL ALI
NAKHEEL

