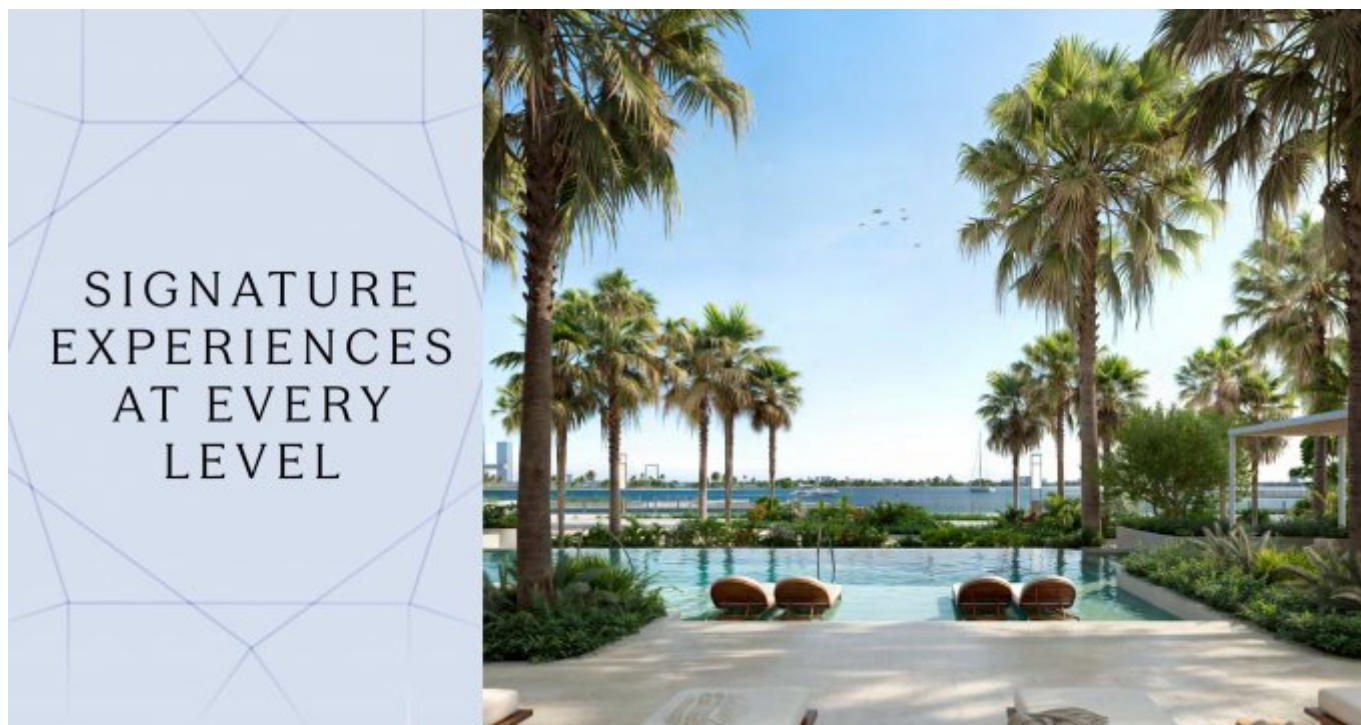


Dubai, Design District – Ekskluzivni stambeni objekti uz obalu na prodaju



Cijene i troškovi

Nabavna cijena	Cijena na upit
Umirovljenik	1
Umirovljenik	3

Podaci o nekretnini

Živi prostor	107,95 m ²
Ukupna površina	131,48 m ²
Sobe	4
spava?e sobe	2
Kupaonice	2
Veli?ina balkona/terase	23,53 m ²
Balkoni	2
Stanje nekretnine	Prvo korištenje
stara/nova zgrada	Nova zgrada
Status prodaje	otvoren

Zna?ajke

Op?a kategorizacija	Luksuzan
Kupaonica	Tuš

Kuhinja	Ugradbena kuhinja, Otvoren
Vrsta grijanja	Središnji
Klimatizirano	Da
Lift	Osobe
namješteno	potpuno
Kabelska/satelitska TV	Da
Skladištenje	Da
prilagođen starijim osobama	Da

Opis nekretnine

Atélis at d3 dizajnirali su poznati arhitekti Skidmore, Owings & Merrill (SOM), tvorci Burj Khalife. Ovaj stambeni objekt odražava elegantnu snagu pustinjačke cvjetove, s krivim balkonima koji podsjećaju na nježne latice. Stanovi nude prostrane životne prostore s visokokvalitetnim završnim obradama i elegantnim dizajnom. Svaki apartman pažljivo je dizajniran kako bi pružio višu životnu iskustvu s mirnim interijerima koji uključuju tople prirodne tonove i luksuzne detalje. Stanovnici će uživati u modernim sadržajima, uključujući wellness prostore, vrtove i infinity bazen s pogledom na prepoznatljiv dubajski obris.

Atélis at d3 je više od stambenog prostora; to je način života. Zajednica je dizajnirana da potiče kreativnost i dobrostanje. S naglaskom na pješaku dostupnost, društvenu interakciju i povezanost s prirodom, ovo područje je idealno za one koji traže i mir i inspiraciju. Njegova strateška lokacija u blizini glavnih poslovnih i zabavnih centara čini ga savršenim izborom za one koji žele kombinirati posao i zabavu. Bilo da uživate u zadivljujućem pogledu ili jednostavno šetate kvartom, Atélis nudi jedinstveni način života u Dubaiju.

Mjesto

Dubai Design District (d3) je dinamično odredište koje promiče kreativnost i inovacije. Smješten strateški u blizini ikoničnih znamenitosti poput Burj Khalife, Downtown Dubai i Dubai Mall, d3 je kulturno središte gdje se umjetnost, dizajn i moda susreću. Ovaj prostor također nudi iznimnu povezanost, uključujući blizinu Ras Al Khor Wildlife Sanctuary i Dubai Creek. Bilo da želite živjeti u zajednici bogatoj kulturnim događanjima ili jednostavno uživati u blizini središta Dubaija, d3 nudi nenadmašnu lokaciju koja kombinira urbanu sofisticiranost i mirne prirodne krajolike.

Značajke

Ove ekskluzivne nekretnine nude vrhunske sadržaje, uključujući izravan pristup vodi i slapove bazena. Luksuzni sadržaji uključuju potopljeni sjedeći područja, cabane, društvene salone za sastanke i potpuno opremljenu teretanu. Poseban dječji bazen i igralište, zajedno s dječjim klubom i prostorom za učenje, stvaraju obiteljsku atmosferu. Nekretnina također nudi vanjske radne prostore i prostor za zabavu. Na višim katovima nalazi se infinity bazen i mirni vrtni prostori koji stanovnicima nude mjesto za opuštanje i obnovu.

Drugi

Odricanje odgovornosti: Planovi, detalji i orijentacija jedinica uključeni su samo kao indikacija i mogu se mijenjati od strane developera/prodavca prema vlastitom nahođenju bez prethodne obavijesti i/ili odgovornosti. Sve slike, uključujući

karakteristike, završne obrade, namještaj, pogled i mjerilo, samo su ilustrativne. Konažni prostori, orijentacija, dimenzije, raspored i materijali mogu se razlikovati od navedenih.

Adresa

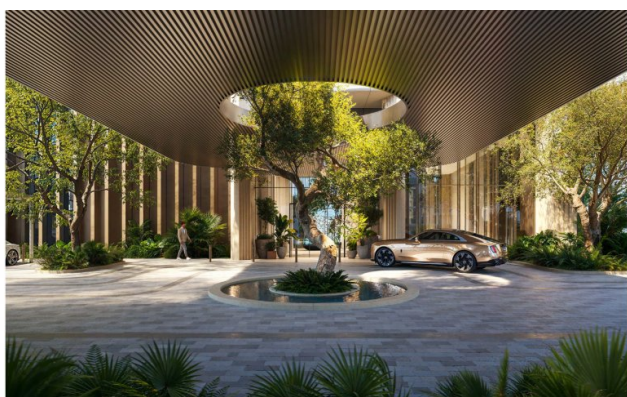
d3 dubai design district

Dobavlja?

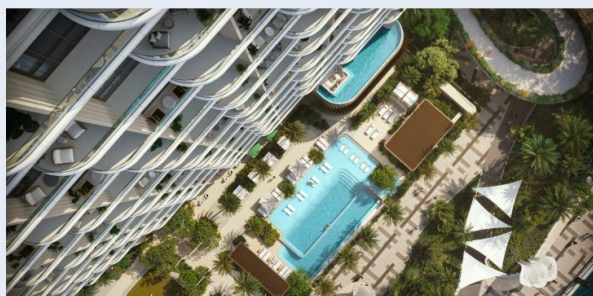
TANAMI PROPERTIES
 Al Marsa Street
 3405 Marina Plaza

Telefon glavni ured
 E-pošta
 Web stranica

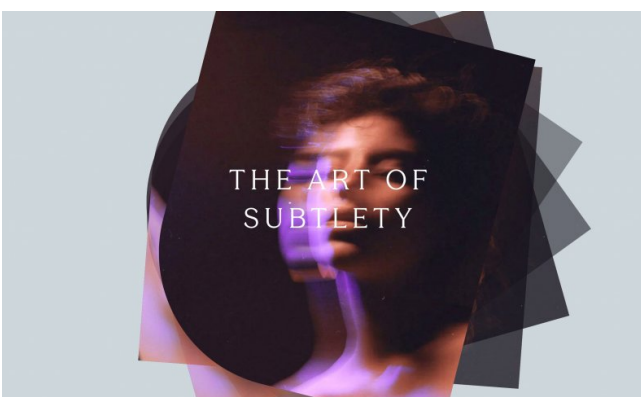
+971 4 248 3400
office@ihr-makler.cc
victoriacrigan@tanamiproperties.ae



KEY FEATURES



- Grand statement arrival framed by nature
- Direct access to the waterfront
- Cascading swimming pool
- Infinity pool with skyline views
- Exclusive rooftop garden
- Dedicated kids' pool
- Sunken seating and cabanas
- Social loungers for gatherings
- Entertainment room
- Entry and lounge areas
- Garden spaces and meditative zones
- Outdoor co-working areas
- Indoor kids' club and learning area
- Outdoor kids' play area
- Multi-level parking





The interiors offer a refined experience of serene living, inspired by the delicate petals of a desert flower. Graceful, sweeping curves flow effortlessly through each space, softened by a warm, natural palette and accented with slender bronze details that add a quiet sense of glamour.

This design approach transforms everyday living into an elevated experience, crafted for those who seek beauty, subtlety, and splendour woven seamlessly into their surroundings.



RESIDENCES FRAMED BY VIEWS

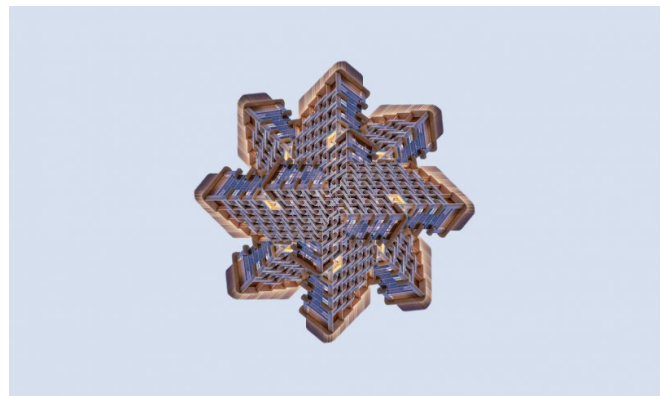
Each one- to four-bedroom residence is a benchmark in contemporary elegance and comfort. Flowing, open-plan interiors are complemented by exquisitely finished kitchens and expansive bathrooms, designed to elevate daily living.

Generously sized bedrooms offer a perfect blend of comfort and sophistication, with ample space for built-in closets that enhance both convenience and style. Private balconies frame sweeping panoramic views of the Dubai skyline, creating a connection between indoor serenity and the world beyond.





Atelis at d3 offers a curated lifestyle that blends resort-style serenity with the vibrancy of urban living. At ground level, cascading pools, lush garden rooms, and secluded indoor-outdoor loungers create an atmosphere of privacy and exclusivity. This level also features an outdoor co-working space, an entertainment room, a children's learning area, and a spacious multi-purpose room that opens



ROOTED IN IMAGINATION



Designed by the visionary studio Skidmore, Owings & Merrill (SOM), the architects behind the iconic Burj Khalifa, Atella at d3 draws inspiration from the elegance and resilience of a desert flower. Its architecture mirrors the delicate strength of this Emirati bloom, with curving balconies layered like petals, giving the façade a fluid, organic form.

SOM: THE ARCHITECTS OF TOMORROW'S ICONS



As global pioneers in architecture, engineering, and planning, SOM is renowned for shaping cities through sustainable innovation and bold, boundary-pushing design. www.som.com



The first level includes a well-appointed gym overlooking the gardens. Layered outdoor spaces throughout the building immerse residents in nature while echoing the creative pulse of d3. From shimmering water features and shaded walkways to calming green zones, every detail is designed to foster well-being, leisure, and a seamless connection between architecture, landscape, and



Higher up, an infinity pool and tranquil garden spaces offer residents a place for reflection and restoration, promoting both mental and physical well-being. With panoramic views of the Dubai skyline, the elevated wellness level invites residents to unwind in

