

ATÉLIS ^{AT} d3



A LEADING MASTER DEVELOPER

Meraas is the developer behind some of Dubai's most iconic addresses from Bluewaters Residences to BVLGARI Residences. Known for exclusive, limited-edition homes in exceptional locations, Meraas blends innovation with artistic mastery to create exceptional living environments. Each development has a signature setting where sophistication, serenity, and vibrant communities thrive.



A woman in a blue dress is looking at a large screen in a dark room. The screen displays a blurred image of a person. The scene is dimly lit, with a warm glow from the screen and a cooler blue light from the left.

WHERE

CREATIVITY

LIVES



Welcome to Dubai Design District (d3), a lifestyle destination envisioned as a global hub for the creative industries. Designed to inspire and connect, d3 positions itself at the forefront of international design, art, fashion, and innovation. This is a place where creativity never sleeps.

d3 is designed to inspire a holistic, creative lifestyle. From lush wetlands to luxurious waterfront residences, a diverse collection of homes is seamlessly connected through thoughtful design. The district prioritises community and connectivity, with a focus on walkability, cycling, and social interaction. Promenades and pathways come alive with curated art and experiences, fostering a vibrant and inspiring environment.



DISTINCT

DARING

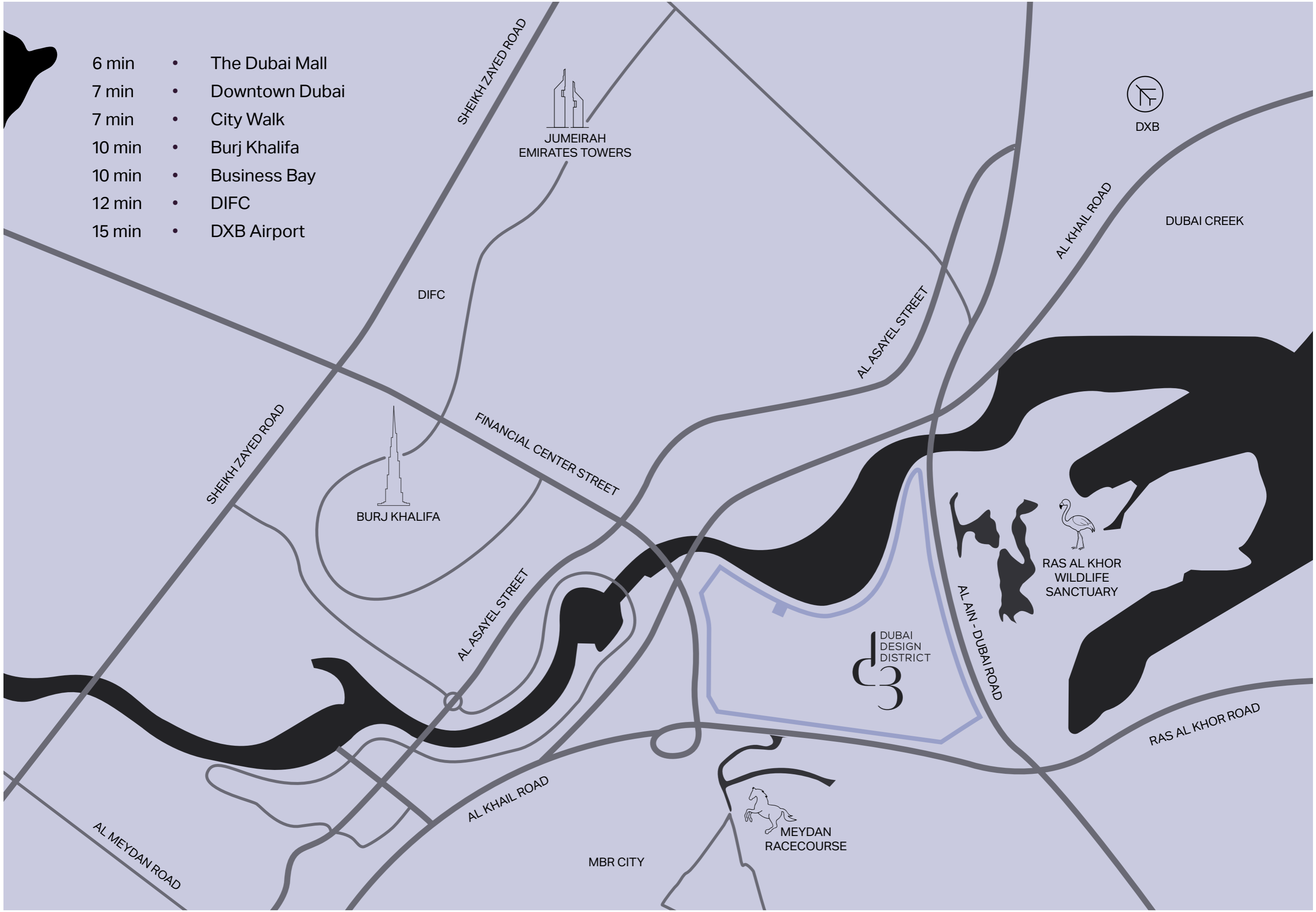
DEFINED

CREATIVITY IS A DESTINATION

Strategically located near Dubai Creek, close to Downtown Dubai and iconic locations such as Burj Khalifa, The Dubai Mall, DIFC and Business Bay, d3 is a creative hub in the heart of Dubai which expands the city's spectacular views across Ras Al Khor Wildlife Sanctuary to the east and the famous Dubai skyline to the west.



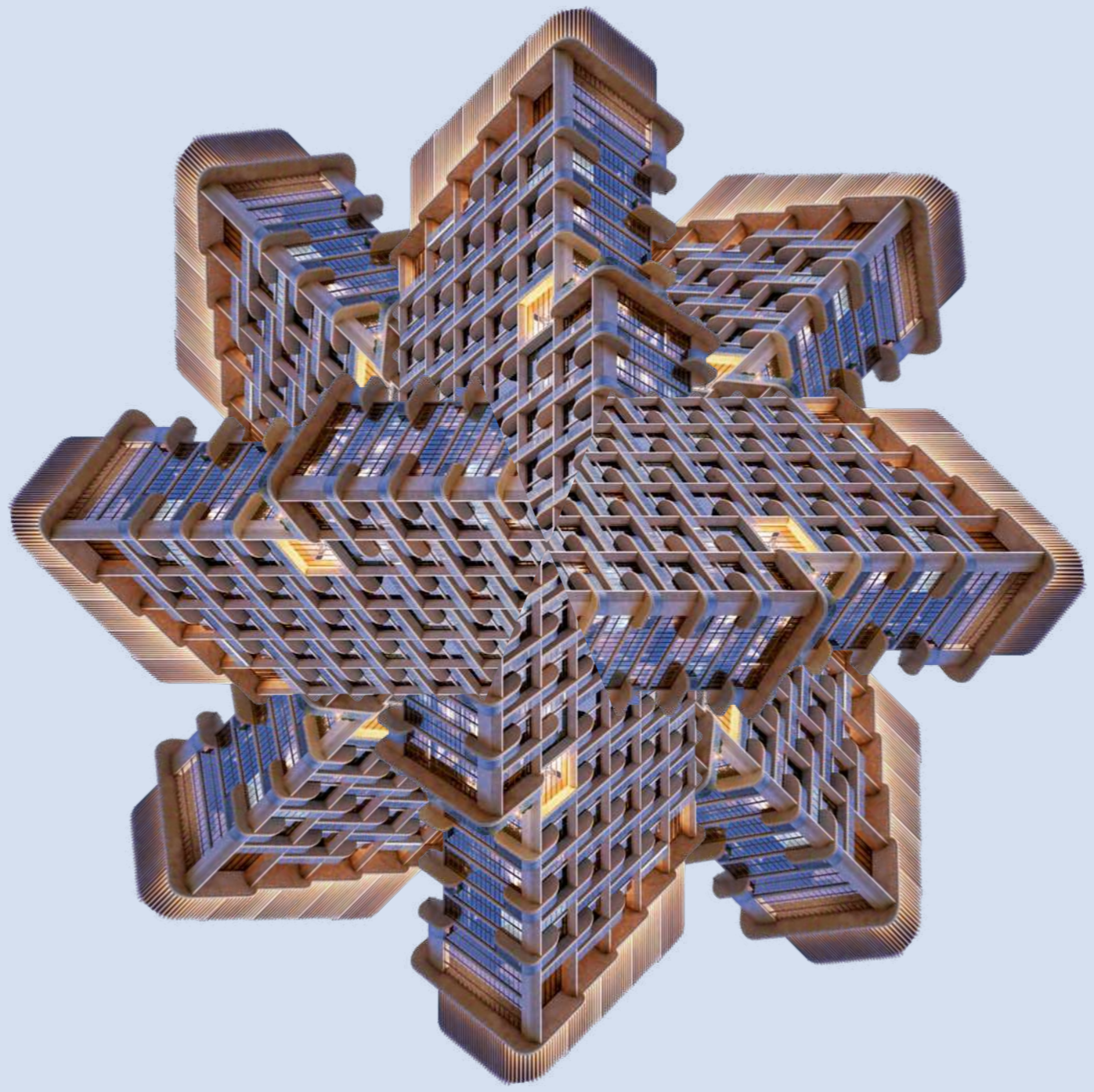
- 6 min • The Dubai Mall
- 7 min • Downtown Dubai
- 7 min • City Walk
- 10 min • Burj Khalifa
- 10 min • Business Bay
- 12 min • DIFC
- 15 min • DXB Airport



A UNIQUE SKYLINE



Spanning 18 million square feet, d3 comes together to create a nurturing space where people can connect, create, and enjoy striking city views.

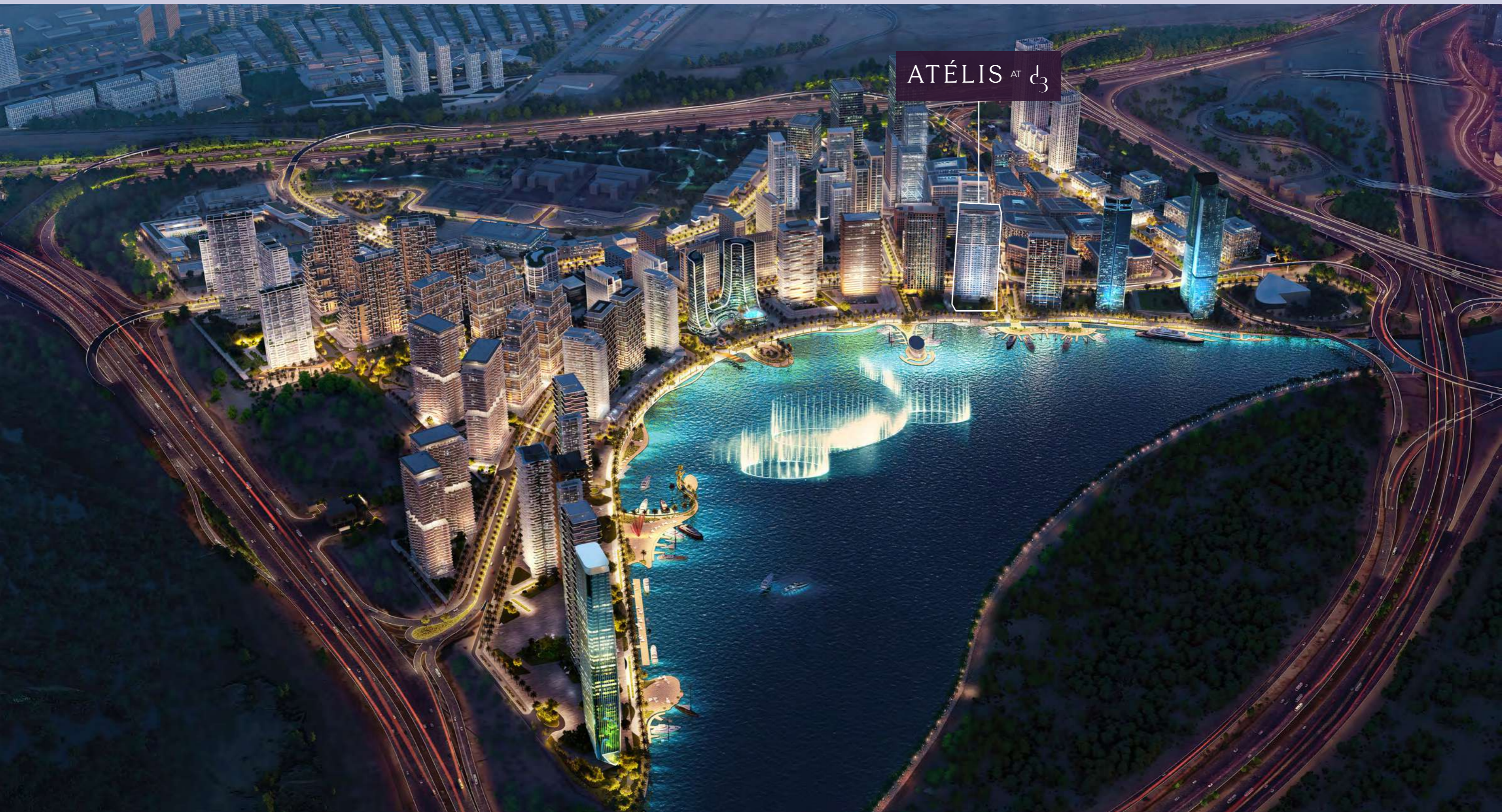


AN ARTISTIC EXPRESSION OF LIVING



RISING ON THE EDGE

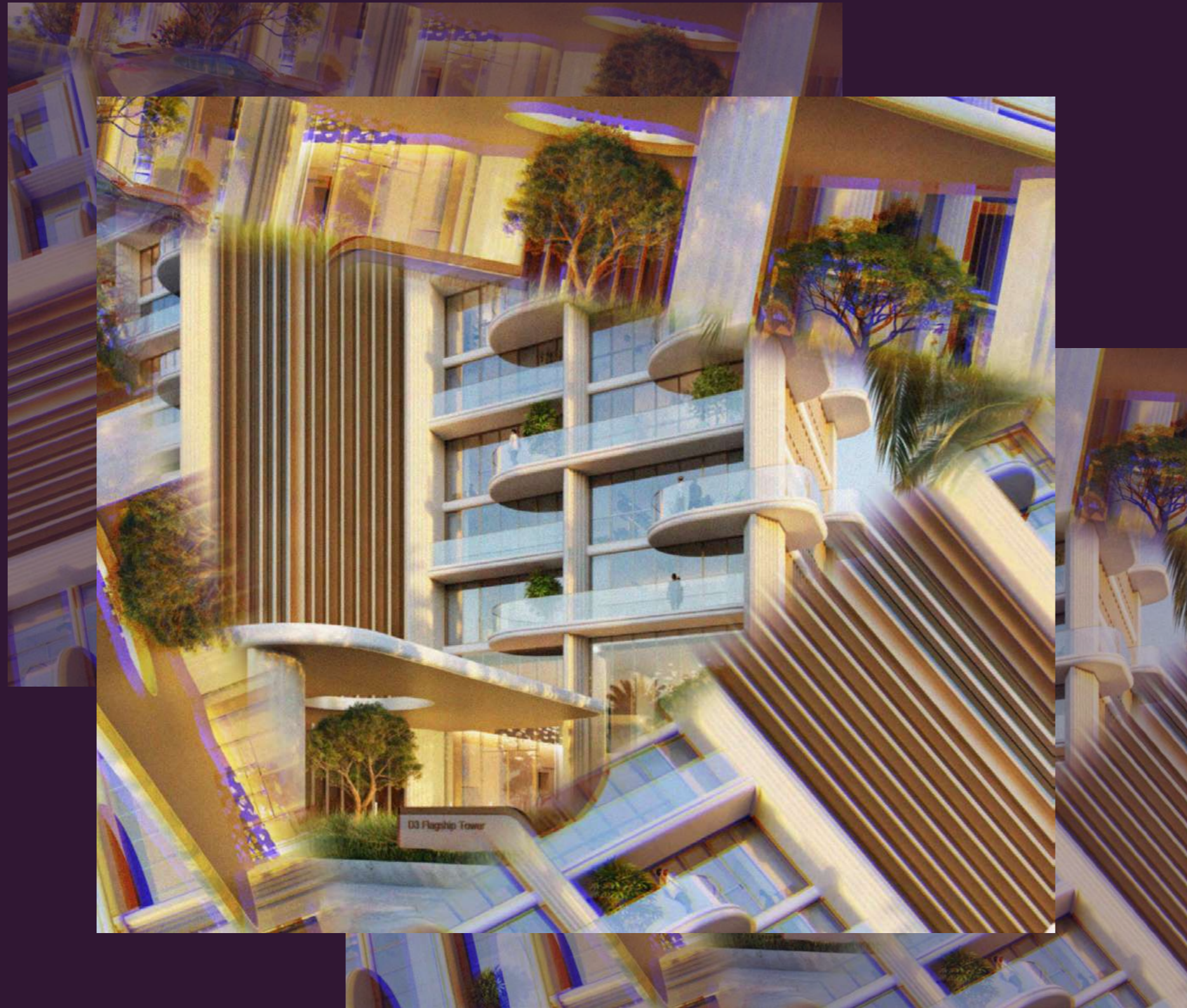
Atélis at d3 rises along the Creekside shoreline as a new landmark in Dubai's creative district. This residential waterfront icon reflects the spirit of d3, where forward-thinking design, environmental awareness, and purposeful innovation come together. With uninterrupted views of the water, Atélis at d3 offers a serene contrast to the energy of the city, bringing residents closer to nature while staying connected to creativity and culture.



ATÉLIS AT d3



ROOTED IN IMAGINATION



Designed by the visionary studio Skidmore, Owings & Merrill (SOM), the architects behind the iconic Burj Khalifa, Atélis at d3 draws inspiration from the elegance and resilience of a desert flower. Its architecture mirrors the delicate strength of this Emirate's bloom, with curving balconies layered like petals, giving the façade a fluid, organic form.



SOM: THE ARCHITECTS OF TOMORROW'S ICONS

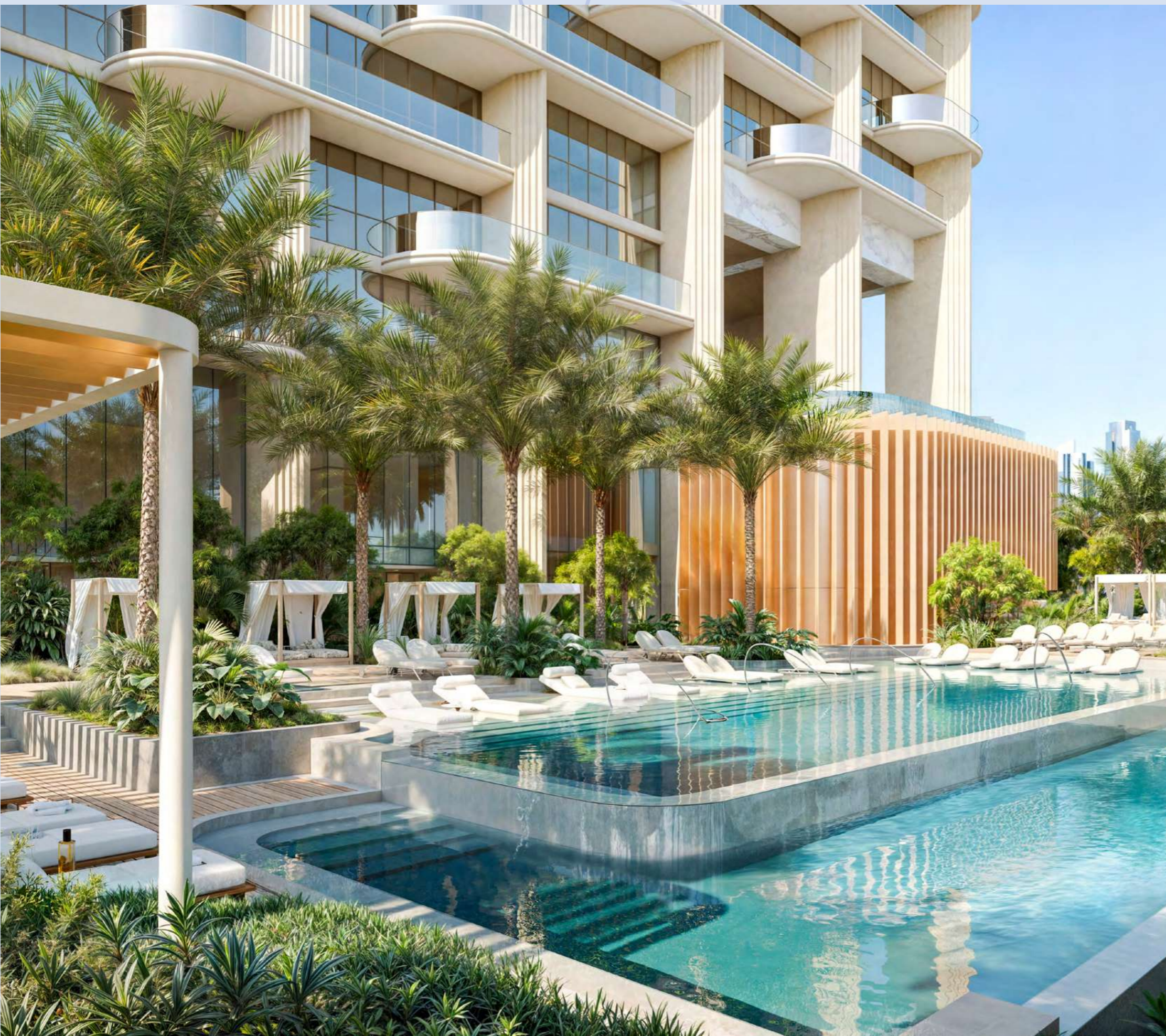


As global pioneers in architecture, engineering, and planning, SOM is renowned for shaping cities through sustainable innovation and bold, boundary-pushing design. From expansive masterplans to cutting-edge structures, their work leaves a lasting legacy.



SIGNATURE
EXPERIENCES
AT EVERY
LEVEL





Atélis at d3 offers a curated lifestyle that blends resort-style serenity with the vibrancy of urban living. At ground level, cascading pools, lush garden rooms, and secluded indoor-outdoor lounges create an atmosphere of privacy and exclusivity. This level also features an outdoor co-working space, an entertainment room, a children's learning area, and a spacious multi-purpose room that opens out to the gardens.





The first level includes a well-appointed gym overlooking the gardens. Layered outdoor spaces throughout the building immerse residents in nature while echoing the creative pulse of d3. From shimmering water features and shaded walkways to calming green zones, every detail is designed to foster well-being, leisure, and a seamless connection between architecture, landscape, and the water's edge.







Higher up, an infinity pool and tranquil garden spaces offer residents a place for reflection and restoration, promoting both mental and physical well-being. With panoramic views of the Dubai skyline, the elevated wellness level invites residents to unwind in peaceful seclusion.





KEY FEATURES



- Grand statement arrival framed by nature
- Direct access to the waterfront
- Cascading swimming pool
- Infinity pool with skyline views
- Exclusive poolside suites

- Dedicated kids' pool
- Sunken seating and cabanas
- Social lounges for gatherings
- Entertainment room
- Fully equipped gym

- Garden spaces and meditative zones
- Outdoor co-working areas
- Indoor kids' club and learning area
- Outdoor kids' play area
- Multi-purpose room

A woman's face is the central focus, framed within a dark, circular area. The image is layered with several semi-transparent geometric shapes, including squares and triangles, in shades of dark grey and black. The background is a light, pale blue. The overall aesthetic is modern and artistic.

THE ART OF
SUBTLETY

The interiors offer a refined experience of serene living, inspired by the delicate petals of a desert flower. Graceful, sweeping curves flow effortlessly through each space, softened by a warm, natural palette and accented with slender bronze details that add a quiet sense of glamour.

This design approach transforms everyday living into an elevated experience, crafted for those who seek beauty, subtlety, and splendour woven seamlessly into their surroundings.





RESIDENCES FRAMED BY VIEWS

Each one- to four-bedroom residence is a benchmark in contemporary elegance and comfort. Flowing, open-plan interiors are complemented by exquisitely finished kitchens and expansive bathrooms, designed to elevate daily living.

Generously sized bedrooms offer a perfect blend of comfort and sophistication, with ample space for built-in closets that enhance both convenience and style. Private balconies frame sweeping panoramic views of the Dubai skyline, creating a connection between indoor serenity and the world beyond.



1-4 BEDROOM | LIVING ROOM



1-4 BEDROOM | DINING ROOM



1-4 BEDROOM | KITCHEN



1-4 BEDROOM | MASTER BEDROOM



1-4 BEDROOM | MASTER BATHROOM

THE SKY VILLAS ABOVE THE CITY

The Sky Villas redefine vertical living with soaring double-height interiors, sculptural staircases, and expansive private terraces that frame panoramic views of both the city skyline and the waterfront.

Thoughtfully designed for those who seek space, light, and refinement, each four-bedroom villa features open-plan kitchens, walk-in closets, and exquisitely crafted finishes that reflect the highest standards of contemporary living. The terraces offer an intimate yet versatile setting ideal for quiet moments of retreat or for hosting elegant gatherings high above the city.



SKY VILLA | TERRACE



SKY VILLA | TERRACE



SKY VILLA | POOL AREA



SKY VILLA | LIVING ROOM



SKY VILLA | LIVING AND DINING ROOM



SKY VILLA | DINING ROOM



SKY VILLA | KITCHEN



SKY VILLA | MASTER BEDROOM



SKY VILLA | MASTER BATHROOM

An aerial, high-angle photograph of a swimming pool. The pool is divided into lanes by blue lane markers. A person is visible swimming in the water. The surrounding area is paved with light-colored tiles. The text is overlaid on the center of the image.

PENTHOUSE LIVING ABOVE ALL ELSE

The five-bedroom penthouses rise above it all, featuring soaring double-height living and dining spaces, statement staircases, and expansive private terraces. With panoramic views of the Dubai skyline, lavish bedrooms, and spa-style bathrooms, every detail is crafted to deliver an exceptional lifestyle.

Generous living and dining areas flow seamlessly onto the private terrace, offering a breathtaking backdrop of the city perfect for elevated everyday living and sophisticated entertaining.



PENTHOUSE | LIVING ROOM



PENTHOUSE | LIVING AND DINING ROOM



PENTHOUSE | DINING ROOM



PENTHOUSE | MASTER BEDROOM



PENTHOUSE | MASTER BATHROOM

