

Pelagia

BY BNW DEVELOPMENTS

AL MARJAN ISLAND

your Serene Paradise

Nestled in the azure waters of Ras Al Khaimah, Al Marjan Island emerges as a breathtaking haven of sophistication and serenity. This extraordinary destination transcends ordinary living, offering an unparalleled lifestyle where luxury meets natural beauty.





the architect's design philosophy

Situated at the crossroads of two prominent roads, the building commands attention with its striking contemporary design. Sweeping balconies, reminiscent of ocean waves, create a rhythmic façade that embodies movement and grace. Thoughtfully recessed corners form spatial terraces, adding depth, stability, and visual allure.

Inspired by the ancient Indian philosophy of Vastu, the residence aligns with natural elements to foster harmony and tranquility. The refined drop-off area further enhances the sense of urban sophistication, welcoming residents and guests to an extraordinary living experience.



Pelagia



Pelagia

*innovated for
excellence*



a symphony of design & nature

Whether you are a professional seeking a sophisticated workspace, a family desiring intimate moments of connection, or an adventure enthusiast craving dynamic experiences, Pelagia provides the perfect canvas for your lifestyle. Each amenity is thoughtfully integrated to support multiple dimensions of contemporary living.

Luxury
Retail

Multi-Level
Basement Parking

Exquisite
Pools



Pelagia

swim in
relaxed luxury





canvas of
sunset hues



golden hues every evening

Breathtaking sunsets painting the sky in hues of gold, pink, and lavender. From the privacy of your balcony, watch as the sun dips gracefully into the calm waters of the Arabian Gulf, casting a mesmerizing glow over the horizon. Let every sunset become a cherished moment, a splendor that enriches your lifestyle.

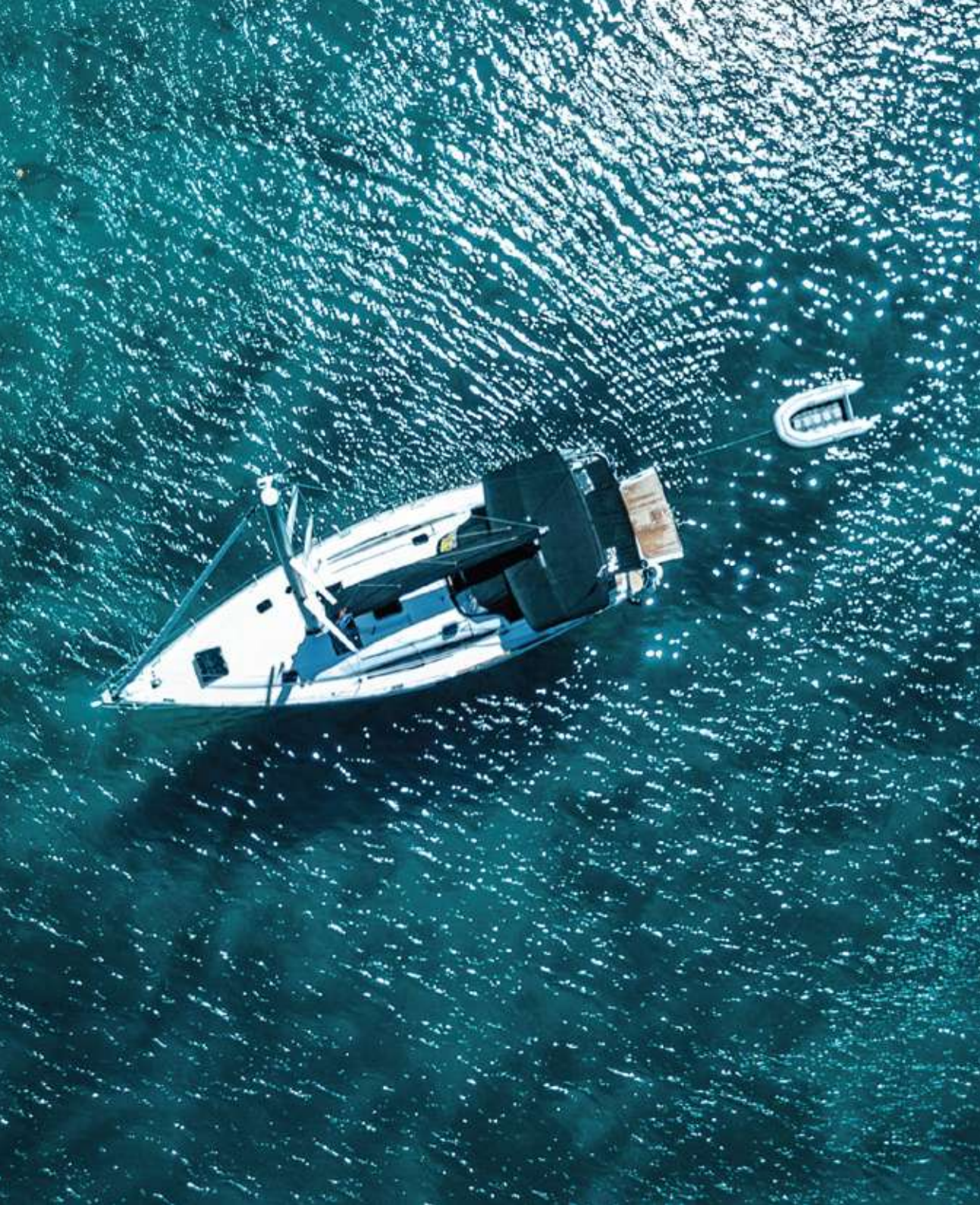
Viewing
Deck

Gourmet
BBQ Area

Rooftop
Pool Bar



A sanctuary of modern comfort and nature-inspired design, offering a holistic living experience that nurtures mind, body, and soul.



where the ocean
meets opulence

The world-class facilities of Pelagia are conceived with a deep understanding that residents lead active lives, requiring spaces that offer flexibility, comfort, and inspiration. Here, luxury transcends mere aesthetics to empower residents to embrace a lifestyle without limits.



*Limitless living,
accentuated*

Pelagia



a masterpiece of modern grandeur

With a focus on creating visually stunning exteriors and thoughtfully planned spaces, Pelagia offers an expansive lifestyle tailored to individual aspirations. Seamlessly integrating modern aesthetics with functional luxury, Pelagia is a harmonious ecosystem of state-of-the-art amenities and striking architectural brilliance.

Private Plunge
Pools

Peaceful Yoga
Deck

Radiant
Natural Light



Work seamlessly, play enthusiastically, relax completely, connect deeply, explore fearlessly—all within the comprehensive ecosystem of Pelagía.



Dive into aquatic bliss

At Pelagia, the exceptional water amenities are designed to cater to every age and mood. Our thoughtfully designed spaces provide ultimate relaxation. Aquatic spaces provide young adventurers gentle waters and endless fun. These water features bring a sense of boundless joy to all.

Kids Pool &
Splashpad

Kids
Play Areas

Intimate
Jacuzzi



Life sans
Boundaries

Whether you are seeking a serene family retreat or a strategic investment opportunity, Al Marjan Island delivers beyond expectations. This remarkable location promises not just a home, but a legacy.



step into
curated excellence



crafted for a luxurious
contemporary lifestyle












Pelagia stands as a masterpiece of modern living, where every detail whispers indulgence and every view tells a story. This isn't just another residence- it's an artfully crafted haven where the boundaries between indoor elegance and outdoor splendor dissolve. Here, the island lifestyle reaches new heights of sophistication.



Whether seeking a peaceful retreat or an active lifestyle, Pelagia adapts to your rhythm. Here, you will find new possibilities to explore and thrive.



world-class amenities

-  Rooftop Infinity Pool
-  Intimate Jacuzzi
-  Pristine Pool (GF)
-  Kids Pool & Splashpad
-  Upscale Gymnasium
-  Rejuvenating Steam & Sauna
-  Peaceful Yoga Deck
-  Soothing Zen Corner
-  Indoor & Outdoor Kids Play Areas
-  Gourmet BBQ Area
-  Scenic Rooftop Pool Bar

Landmarks in proximity



05 Minutes
Al Marjan Island Boulevard



15 Minutes
Al Hamra Village



08 Minutes
Wynn Resort



16 Minutes
Cosmo Health Center



10 Minutes
Al Hamra Mall



16 Minutes
Royal Yacht Club, RAK



11 Minutes
Waldorf Astoria Hotel



16 Minutes
Dreamland Aqua Park



14 Minutes
Al Hamra Golf Club

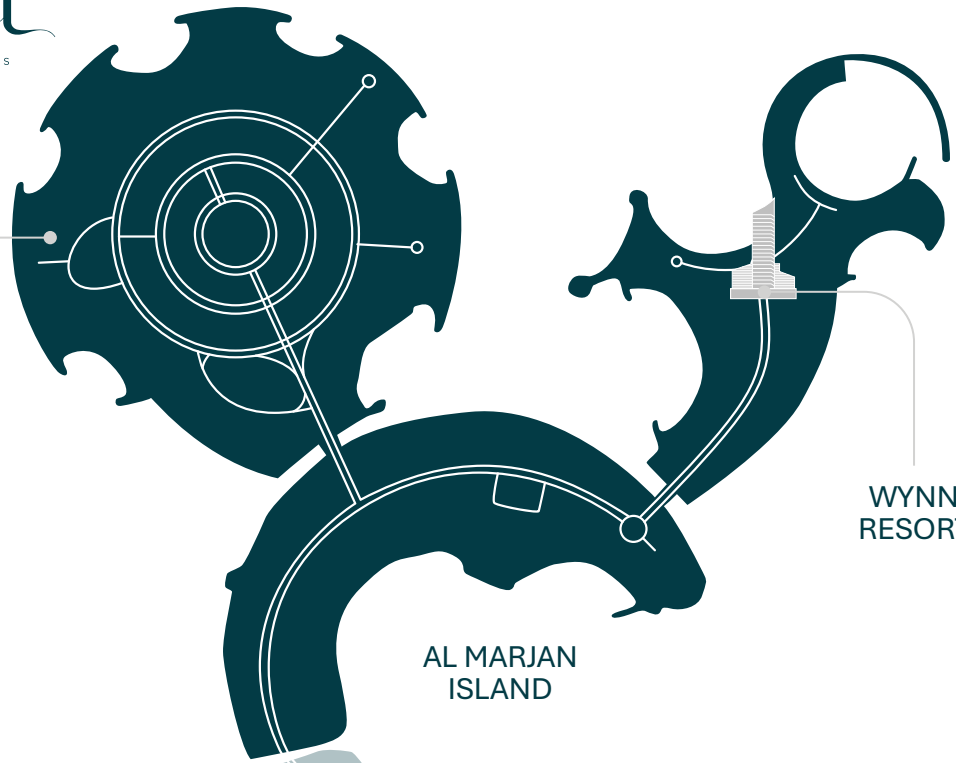


25 Minutes
The Ritz-Carlton, RAK



Pelagia

BY BNW DEVELOPMENTS



34 Minutes
RAK Airport



56 Minutes
Dubai International Airport



90 Minutes
Al Maktoum International Airport



mindful living
active lifestyle



wellness without compromise

Pelagia transcends the conventional definition of residential living, offering an expansive lifestyle that adapts to every individual's unique aspiration. Meticulously designed to cater to diverse needs, this development creates a harmonious balance between contemporary convenience and refined elegance.

Upscale
Gymnasium

Soothing
Zen Corner

Rejuvenating
Steam & Sauna



blending creativity
with nature



Pelagia

Pelagia



Fully-furnished spaces designed for those that seek enhanced comfort. Pelagia provides a gentle retreat from the pace of urban life.



orchestrated for connoisseurs

Each residence within Pelagia tells its own story of sophistication, crafted with meticulous attention to detail. Abundant natural light creates a bright and inviting atmosphere throughout the year. Pelagia presents an elevated way of life where every sunrise brings new possibilities, and every sunset reaffirms the wisdom of choosing extraordinary living.



*the essence of
elevated living*





island living
tranquil views



experience the extraordinary

Rising gracefully in Marjan's most coveted location, Pelagia offers more than just homes; it presents a canvas for life's most precious moments. Each space within Pelagia is thoughtfully designed to elevate everyday experiences into extraordinary memories, creating not just a place to live, but a place to truly thrive.



*a testament to
timelessness*



A modern, minimalist interior space, likely a reception area. The room features a curved reception desk with a white top and a copper-colored wave-like pattern. Two black office chairs are positioned behind the desk. The wall behind the desk is white with a large, curved wooden panel that has the name "Pelagia" written on it in a gold, serif font. A large, ornate chandelier hangs from the ceiling. The ceiling is white with a curved, illuminated edge. The floor is a light-colored, polished material. On the right side, there are two tall, dark, abstract sculptures. On the left side, there is a small, round, light-colored sofa and a potted plant.

Pelagia

*where grandeur
begins*



a prelude to excellence

At Pelagia, excellence is not just promised—it's woven into every fiber of existence. It stands as a testament to visionary design, where contemporary architecture dances with timeless elegance against the backdrop of pristine coastal views. Here, finesse transcends the ordinary, creating spaces where life's finest moments unfold.



UNIT
Plans

Pelagia is masterfully positioned to capture the most stunning views of the island's coastline. This exceptional development flawlessly blends unrivalled scenic vistas with an idyllic residential experience.



Unit 107

1BHK - TYPE A

1	Kitchen	2.9m x 2.7m
2	Living & Dining	4.2m x 5.9m
3	PWD Room	2.1m x 1.3m
4	Bedroom	4m x 4.4m
5	Bath	1.8m x 2.8m
6	Dress Room	2.1m x 2.7m
7	Balcony	8.5m x 1.6m

Suite Area	71.88 sq.m	773.71 sq.ft
Balcony Area	13.66 sq.m	147.04 sq.ft
Total Area	85.54 sq.m	920.74 sq.ft



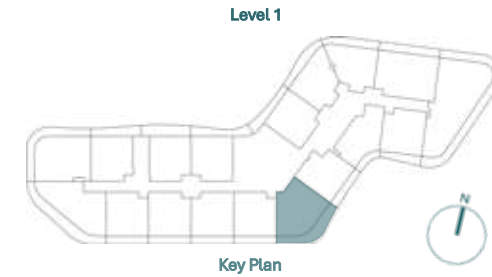
Unit 110

1BHK - TYPE B



1	Kitchen	3.7m x 2.8m
2	Living & Dining	8.3m x 4.1m
3	PWD Room	1.7m x 1.5m
4	Bedroom	3.6m x 3.8m
5	Bath	1.8m x 2.7m
6	Dress Room	3.6m x 2.1m
7	Balcony 1	8.3m x 2.4m
8	Balcony 2	6.6m x 1.6m

Suite Area	84.93 sq.m	914.18 sq.ft
Balcony Area	29.98 sq.m	322.70 sq.ft
Total Area	114.91 sq.m	1236.88 sq.ft



Unit 117

1BHK - TYPE C



1	Kitchen	3.1m x 3.5m
2	Living & Dining	7m x 3.9m
3	PWD Room	1.8m x 1.3m
4	Bedroom	3.7m x 4.6m
5	Bath	1.8m x 2.8m
6	Dress Room	1.8m x 2.7m
7	Balcony	11.7m x 1.8m

Suite Area	73.36 sq.m	789.64 sq.ft
Balcony Area	18.73 sq.m	201.61 sq.ft
Total Area	92.09 sq.m	991.25 sq.ft





Unit 112

1BHK - TYPE D

1	Kitchen	2.6m x 2.7m
2	Living & Dining	3.9m x 7.1m
3	PWD Room	2m x 1.8m
4	Laundry	1m x 1m
5	Bedroom	3.3m x 3.9m
6	Bath	2.7m x 1.8m
7	Dress Room	2.6m x 3.6m
8	Balcony	5.8m x 1.5m

Suite Area	72.84 sq.m	784.04 sq.ft
Balcony Area	8.32 sq.m	89.56 sq.ft
Total Area	81.16 sq.m	873.60 sq.ft



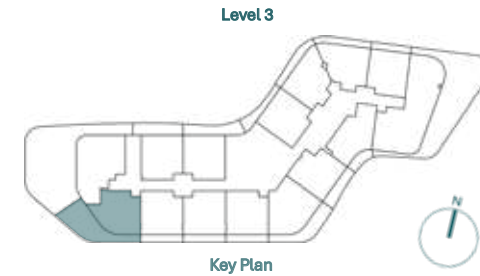
Unit 304

1BHK - TYPE E



1	Kitchen	2.4m x 2.7m
2	Living & Dining	6.1m x 5.4m
3	PWD Room	2.1m x 1.3m
4	Bedroom	4m x 4.4m
5	Bath	1.8m x 2.8m
6	Dress Room	2.1m x 2.7m
7	Balcony 1	10.3m x 6m
8	Balcony 2	6.5m x 1.5m

Suite Area	71.72 sq.m	771.99 sq.ft
Balcony Area	58.82 sq.m	633.13 sq.ft
Total Area	130.54 sq.m	1405.12 sq.ft





Unit 609

1BHK - TYPE F

1	Kitchen	4.1m x 2.4m
2	Living & Dining	5.8m x 3.4m
3	PWD Room	1.7m x 1.5m
4	Bedroom	3.9m x 3.6m
5	Bath	2.8m x 1.7m
6	Dress Room	1.8m x 3.6m
7	Balcony	4.6m x 11.2m

Suite Area	62.65 sq.m	674.36 sq.ft
Balcony Area	44.4 sq.m	477.92 sq.ft
Total Area	107.05 sq.m	1152.28 sq.ft



Unit 115

2BHK - TYPE A



1	Kitchen	2.8m x 2.7m
2	Living & Dining	4.1m x 6m
3	PWD Room	1.9m x 1.6m
4	Laundry	2m x 1.6m
5	Bedroom 1	3.8m x 4.9m
6	Bath 1	2.4m x 2.5m
7	Dress Room 1	1.9m x 2.5m
8	Bedroom 2	4m x 4.1m
9	Bath 2	2.8m x 1.8m
10	Balcony	12.3m x 1.6m

Suite Area	107.09 sq.m	1152.71 sq.ft
Balcony Area	20.09 sq.m	216.25 sq.ft
Total Area	127.18 sq.m	1368.95 sq.ft





Unit 104

2 BHK - TYPE B

1	Kitchen	2.4m x 3.7m
2	Living & Dining	3.8m x 6.7m
3	PWD Room	2m x 1.3m
4	Bedroom 1	4.7m x 3.6m
5	Bath 1	2.8m x 1.8m
6	Dress Room 1	1.8m x 1.8m
7	Bedroom 2	4.7m x 3.2m
8	Bath 2	2.8m x 1.8m
9	Dress Room 2	2.4m x 1.9m
10	Balcony 1	11.4m x 1.6m
11	Balcony 2	1.4m x 9.6m

Suite Area	98.08 sq.m	1055.72 sq.ft
Balcony Area	33.88 sq.m	364.68 sq.ft
Total Area	131.96 sq.m	1420.41 sq.ft

Level 1



Key Plan

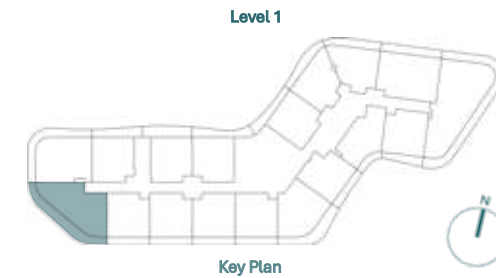


Unit 105

2 BHK - TYPE C

1	Kitchen	2.3m x 2.7m
2	Living & Dining	6.1m x 5.9m
3	PWD Room	2.1m x 1.4m
4	Bedroom 1	4.6m x 4.7m
5	Bath 1	2.4m x 1.6m
6	Dress Room 1	2.4m x 1.9m
7	Bedroom 2	3.2m x 3.4m
8	Bath 2	1.7m x 2.5m
9	Dress Room 2	2m x 2.5m
10	Balcony	18.2m x 2.1m

Suite Area	97.21 sq.m	1046.36 sq.ft
Balcony Area	39.07 sq.m	420.55 sq.ft
Total Area	136.28 sq.m	1466.91 sq.ft



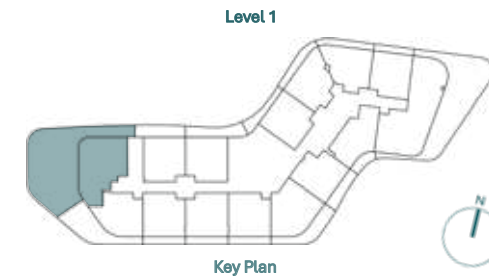
Unit 303

2 BHK - TYPE D



1	Kitchen	2.3m x 2.7m
2	Living & Dining	6.1m x 5.9m
3	PWD Room	2.1m x 1.4m
4	Bedroom 1	4.6m x 4.7m
5	Bath 1	2.4m x 1.6m
6	Dress Room 1	2.4m x 1.9m
7	Bedroom 2	3.2m x 3.4m
8	Bath 2	1.7m x 2.5m
9	Dress Room 2	2m x 2.5m
10	Balcony	18.2m x 2.1m

Suite Area	107.85 sq.m	1160.89 sq.ft
Balcony Area	186.19 sq.m	2004.13 sq.ft
Total Area	294.04 sq.m	3165.02 sq.ft



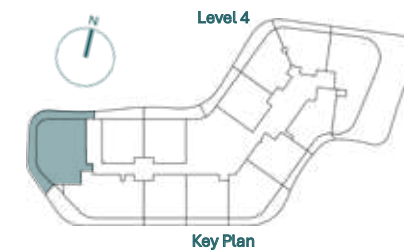
Unit 403

2 BHK - TYPE E



1	Kitchen	3.1m x 5.1m
2	Living & Dining	4m x 8.2m
3	PWD Room	1.3m x 2.6m
4	Bedroom 1	5.6m x 3.6m
5	Bath 1	1.8m x 2.6m
6	Dress Room 1	1.8m x 2.2m
7	Bedroom 2	3.7m x 3.4m
8	Bath 2	1.8m x 2.6m
9	Dress Room 2	1.7m x 2.6m
10	Maid Room	3.6m x 2.6m
11	Bath	1.6m x 1.5m
12	Balcony 1	1.5m x 11.9m
13	Balcony 2	11m x 1.7m
14	Balcony 3	4.7m x 2.3m

Suite Area	122.69 sq.m	1320.62 sq.ft
Balcony Area	47.23 sq.m	508.38 sq.ft
Total Area	169.92 sq.m	1829.00 sq.ft



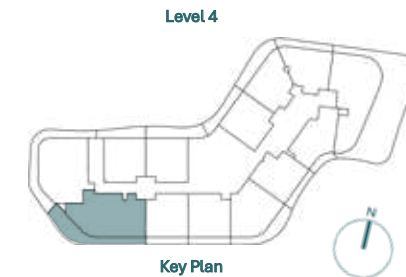
Unit 404

2BHK - TYPE F



1	Kitchen	3.4m x 2.5m
2	Living & Dining	6.9m x 7.4m
3	PWD Room	2.3m x 1.7m
4	Bedroom 1	4m x 4.4m
5	Bath 1	1.8m x 2.8m
6	Dress Room 1	2.1m x 4.1m
7	Bedroom 2	4.3m x 3.4m
8	Bath 2	2.6m x 1.7m
9	Dress Room 2	1.6m x 1.7m
10	Maid Room	2.4m x 2.2m
11	Bath	1.8m x 2.2m
12	Balcony 1	12.3m x 1.4m
13	Balcony 2	9.2m x 2.5m

Suite Area	120.85 sq.m	1300.82 sq.ft
Balcony Area	46.29 sq.m	498.26 sq.ft
Total Area	167.14 sq.m	1799.08 sq.ft



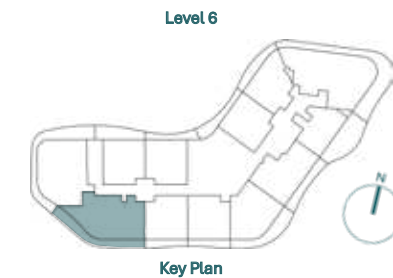
Unit 604

2BHK - TYPE G



1	Kitchen	2.5m x 2.7m
2	Living & Dining	6.5m x 6.4m
3	PWD Room	2m x 1.3m
4	Laundry	1.6m x 1.3m
5	Bedroom 1	4m x 4.5m
6	Bath 1	1.8m x 2.7m
7	Dress Room 1	2.1m x 4m
8	Bedroom 2	4.1m x 3.3m
9	Bath 2	1.8m x 2.6m
10	Dress Room 2	2.2m x 2.6m
11	Balcony 1	9.7m x 1.8m
12	Balcony 2	11m x 2.1m

Suite Area	114.21 sq.m	1229.35 sq.ft
Balcony Area	37 sq.m	398.26 sq.ft
Total Area	151.21 sq.m	1627.61 sq.ft



Unit 1205

2BHK - TYPE H



1	Kitchen	3m x 2.7m
2	Living & Dining	4.2m x 6m
3	PWD Room	2.1m x 1.3m
4	Bedroom 1	3.6m x 5.8m
5	Bath 1	2.5m x 1.8m
6	Bedroom 2	3.8m x 4.5m
7	Bath 2	2.6m x 1.8m
8	Laundry	2.1m x .9m
9	Balcony	12m x 2.3m

Suite Area	91.17 sq.m	981.35 sq.ft
Balcony Area	22.8 sq.m	245.42 sq.ft
Total Area	113.97 sq.m	1226.76 sq.ft



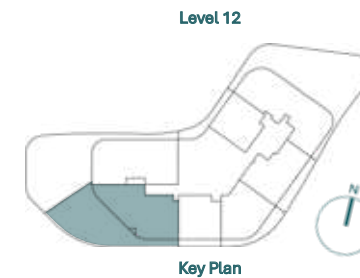
Unit 1202

2BHK - TYPE I



1	Kitchen	2.2m x 3.7m
2	Living & Dining	4.3m x 10.2m
3	PWD Room	1.4m x 1.6m
4	Bedroom 1	6.3m x 5.3m
5	Bath 1	2.9m x 2.5m
6	Bedroom 2	4.4m x 4m
7	Bath 2	2.7m x 3m
8	Maid Room	2.3m x 2.3m
9	Bath	2.3m x 1.5m
10	Balcony 1	16m x 9.9m
11	Balcony 2	1.4m x 7.5m

Suite Area	125.48 sq.m	1350.66 sq.ft
Balcony Area	134.87 sq.m	1451.73 sq.ft
Total Area	260.35 sq.m	2802.38 sq.ft



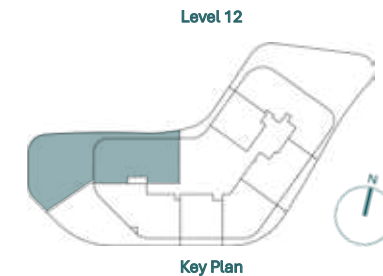


Unit 1201

2BHK - TYPE J

1	Kitchen	4.4m x 2.7m
2	Living & Dining	6.6m x 6.1m
3	PWD Room	2.1m x 1.5m
4	Bedroom 1	4.6m x 3.8m
5	Bath 1	2.8m x 2.7m
6	Dress Room 1	1.7m x 2.7m
7	Bedroom 2	3.4m x 4.7m
8	Bath 2	2.1m x 2.7m
9	Dress Room 2	2.1m x 1.9m
10	Maid Room	3m x 2.1m
11	Bath	1.5m x 2.1m
12	Laundry	1.8m x 1.5m
13	Balcony 1	17.2m x 1.5m
14	Balcony 2	13.1m x 14.5m

Suite Area	146.86 sq.m	1580.79 sq.ft
Balcony Area	187.84 sq.m	2021.89 sq.ft
Total Area	334.7 sq.m	3602.68 sq.ft





Unit 114

3BHK - TYPE A

1	Kitchen	2.4m x 3.6m
2	Living & Dining	7.6m x 6.8m
3	PWD Room	1.5m x 1.8m
4	Bedroom 1	5.3m x 4.3m
5	Bath 1	3.4m x 2m
6	Dress Room 1	1.8m x 2.6m
7	Bedroom 2	3.6m x 4.9m
8	Bath 2	1.7m x 2.8m
9	Bedroom 3	3.4m x 4.4m
10	Bath 3	1.6m x 2.6m
11	Maid Room	1.8m x 2.6m
12	Bath	1.8m x 1.5m
13	Balcony 1	1.6m x 11.3m
14	Balcony 2	23.2m x 1.6m
15	Balcony 3	2m x 4.8m

Suite Area	158.26 sq.m	1703.50 sq.ft
Balcony Area	63.01 sq.m	678.23 sq.ft
Total Area	221.27 sq.m	2381.73 sq.ft

Level 1



Key Plan

Unit 311

3BHK - TYPE B



1	Kitchen	2.6m x 3.4m
2	Living & Dining	6.1m x 7.2m
3	PWD Room	1.7m x 1.7m
4	Bedroom 1	6m x 4.3m
5	Bath 1	2.8m x 2m
6	Dress Room 1	1.6m x 2m
7	Bedroom 2	4.5m x 3.3m
8	Bath 2	2.8m x 1.8m
9	Dress Room 2	1.6m x 3.5m
10	Bedroom 3	3.4m x 4.2m
11	Bath 3	2.1m x 2.9m
12	Dress Room 3	2.1m x 1.7m
13	Maid Room	2.4m x 2.1m
14	Bath	2.4m x 1.5m
15	Balcony 1	1.3m x 7.4m
16	Balcony 2	22.3m x 7.6m
17	Balcony 3	1m x 9.2m

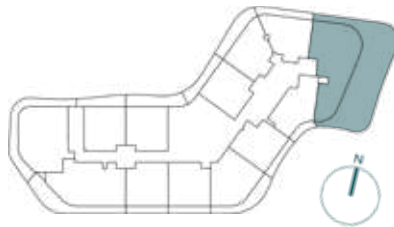
Suite Area	160.94 sq.m	1732.34 sq.ft
Balcony Area	156.06 sq.m	1679.82 sq.ft
Total Area	317 sq.m	3412.16 sq.ft

Unit 410

3BHK - TYPE C



Level 4



Key Plan

1	Kitchen	2.7m x 2.4m
2	Living & Dining	7.4m x 4.4m
3	PWD Room	1.3m x 1.7m
4	Bedroom 1	4.7m x 4.3m
5	Bath 1	2.9m x 2.5m
6	Dress Room 1	1.7m x 2.7m
7	Bedroom 2	3.3m x 3.8m
8	Bath 2	1.6m x 2.7m
9	Dress Room 2	1.6m x 2.7m
10	Bedroom 3	3.5m x 3.2m
11	Bath 3	2.5m x 1.8m
12	Dress Room 3	1.3m x 1.8m
13	Maid Room	2.6m x 3m
14	Bath	1.3m x 2m
15	Balcony 1	22.8m x 6.5m
16	Balcony 2	1.3m x 10.5m

Suite Area	138.51 sq.m	1490.91 sq.ft
Balcony Area	174.82 sq.m	1881.75 sq.ft
Total Area	313.33 sq.m	3372.66 sq.ft



Level 6



Key Plan

Unit 610

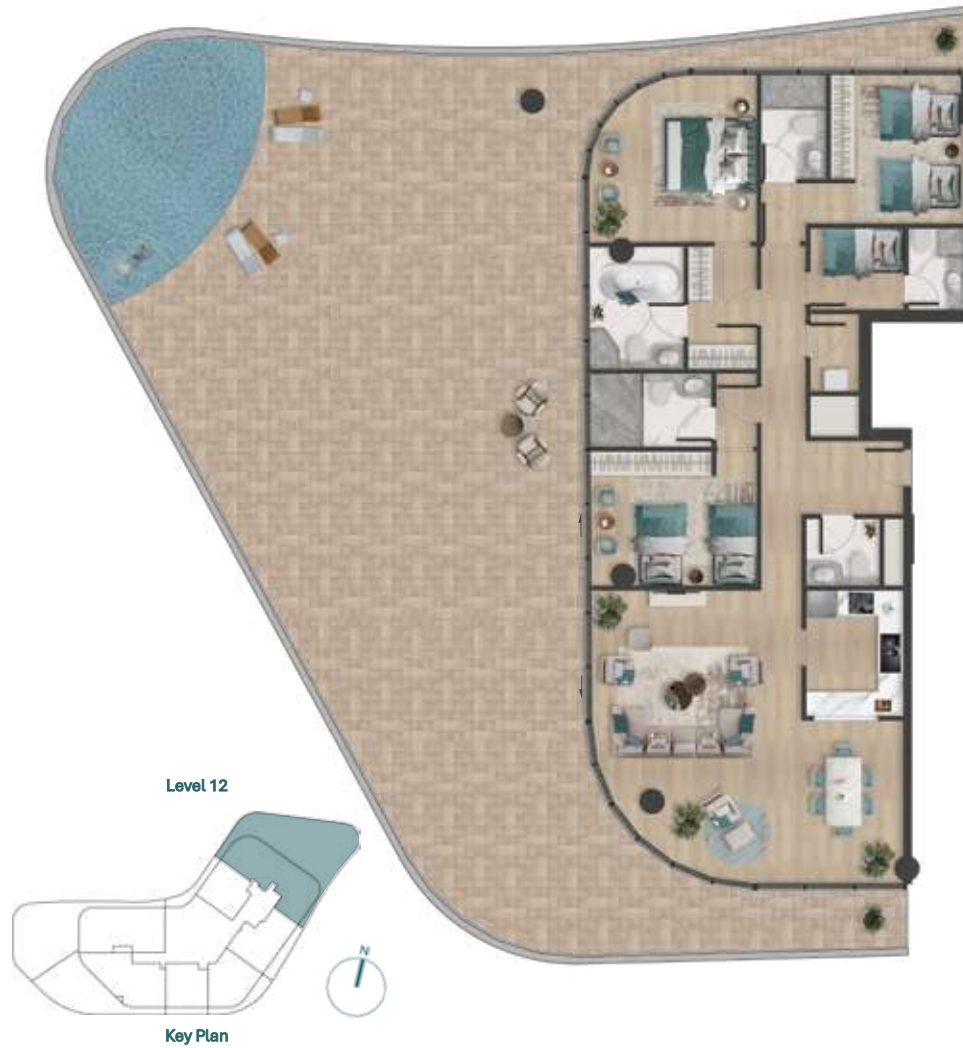
3BHK - TYPE D

1	Kitchen	3m x 3.2m
2	Living & Dining	7.7m x 5.2m
3	PWD Room	2.2m x 1.6m
4	Bedroom 1	4.4m x 3.7m
5	Bath 1	3.9m x 2.4m
6	Dress Room 1	2.7m x 3.1m
7	Bedroom 2	3.7m x 4m
8	Bath 2	1.7m x 2.8m
9	Bedroom 3	3.7m x 3.7m
10	Bath 3	1.7m x 2.5m
11	Maid Room	2.1m x 2.1m
12	Bath	1.5m x 1.5m
13	Laundry	0.8m x 1.9m
14	Balcony 1	12.1m x 3m
15	Balcony 2	1.3m x 22.4m

Suite Area	156.76 sq.m	1687.35 sq.ft
Balcony Area	70.13 sq.m	754.87 sq.ft
Total Area	226.89 sq.m	2442.22 sq.ft

Unit 1206

3BHK - TYPE E



1	Kitchen	3.1m x 2.4m
2	Living & Dining	7.2m x 7.6m
3	PWD Room	1.7m x 1.8m
4	Bedroom 1	4.1m x 4.1m
5	Bath 1	3m x 2.3m
6	Dress Room 1	3m x 1.7m
7	Bedroom 2	3.7m x 5m
8	Bath 2	2.6m x 1.6m
9	Bedroom 3	3.3m x 4.1m
10	Bath 3	1.8m x 3m
11	Maid Room	2m x 2.3m
12	Bath	2m x 1.4m
13	Laundry	1.9m x 1.2m
14	Balcony 1	1.2m x 9.4m
15	Balcony 2	21.9m x 12.9m
16	Balcony 3	1.4m x 7.9m

Suite Area	155.28 sq.m	1671.42 sq.ft
Balcony Area	217.72 sq.m	2343.52 sq.ft
Total Area	373 sq.m	4014.94 sq.ft



Unit 1301

PENTHOUSE 1

1	Kitchen	4.3m x 3.8m
2	Living & Dining	7.5m x 10.7m
3	PWD Room	1.8m x 2m
4	Wash Room	1.8m x 1.6m
5	Bedroom 1	7.8m x 9.5m
6	Bath 1	3.4m x 3.3m
7	Dress Room 1	3.9m x 3.3m
8	Bedroom 2	4.4m x 5m
9	Bath 2	2.8m x 2.3m
10	Dress Room 2	2.8m x 2.6m
11	Bedroom 3	4.4m x 5m
12	Bath 3	2.8m x 2.3m
13	Dress Room 3	2.8m x 2.6m
14	Bedroom 4	8.6m x 8.3m
15	Bath 4	2.9m x 3.3m
16	Dress Room 4	2.6m x 3.3m
17	Maid Room	2.5m x 2.1m
18	Bath	2.5m x 1.5m
19	Balcony 1	1.4m x 26.2m
20	Balcony 2	17.4m x 5.1m
21	Balcony 3	1.4m x 15.2m

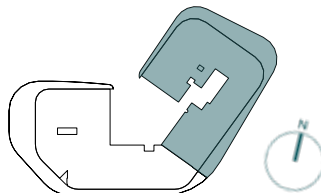
Suite Area	381.58 sq.m	4107.29 sq.ft
Balcony Area	152.34 sq.m	1639.77 sq.ft
Total Area	533.92 sq.m	5747.07 sq.ft

Unit 1302

PENTHOUSE 2



Level 13



Key Plan

1	Kitchen	4.6m x 4.1m
2	Living & Dining	7.8m x 11.7m
3	PWD Room	1.8m x 2m
4	Wash Room	1.8m x 1.9m
5	Bedroom 1	8.7m x 5.5m
6	Bath 1	4.5m x 2.7m
7	Dress Room 1	3m x 4.5m
8	Bedroom 2	4.5m x 3.6m
9	Bath 2	2.8m x 1.7m
10	Dress Room 2	1.6m x 1.7m
11	Bedroom 3	4.5m x 4m
12	Bath 3	2.8m x 1.6m
13	Dress Room 3	1.6m x 1.8m
14	Bedroom 4	8.8m x 4.7m
15	Bath 4	3m x 2.4m
16	Dress Room 4	3m x 2.2m
17	Maid Room	2.2m x 2.4m
18	Bath	2.2m x 1.5m
19	Balcony 1	1m x 16.5m
20	Balcony 2	20.7m x 4m
21	Balcony 3	2.4m x 25.2m

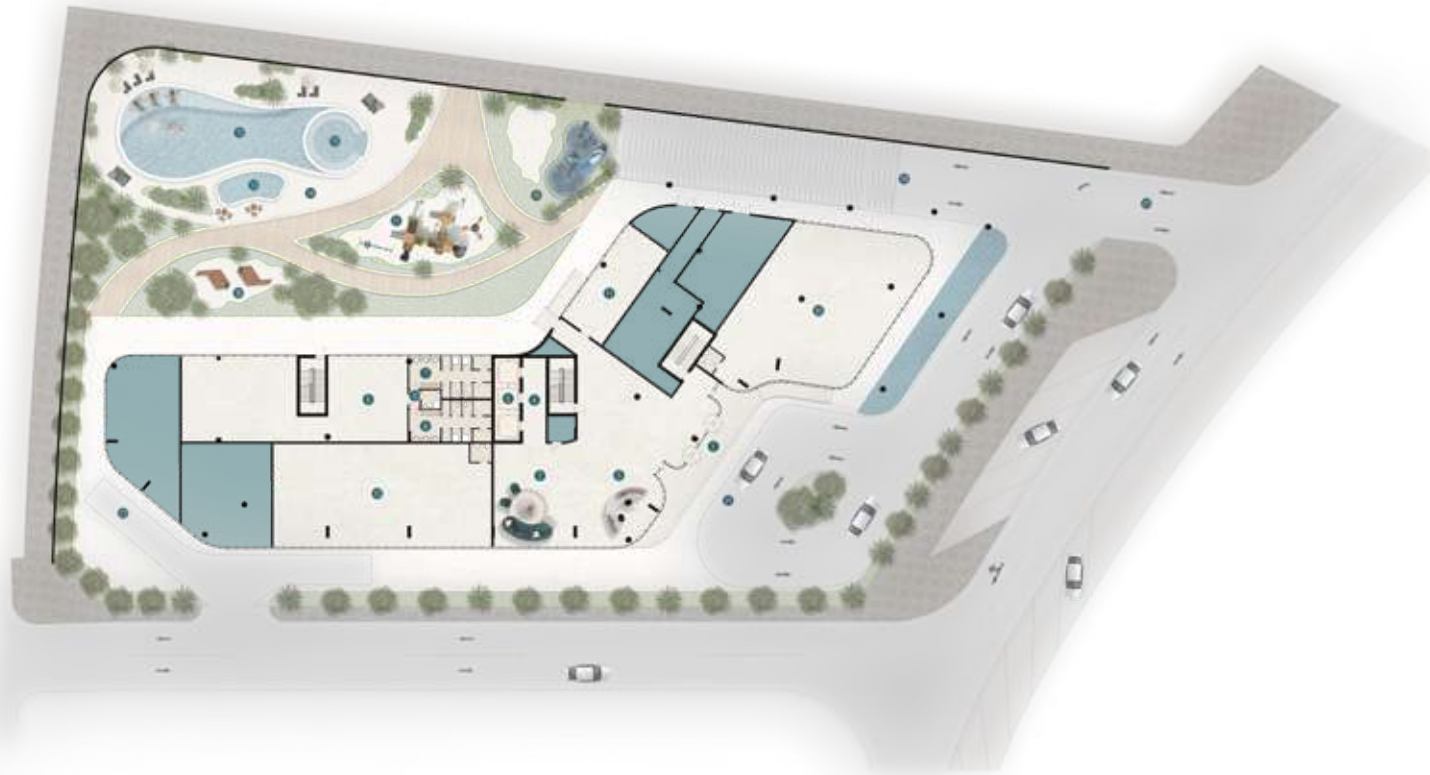
Suite Area	353.2 sq.m	3801.81 sq.ft
Balcony Area	123.6 sq.m	1330.42 sq.ft
Total Area	476.8 sq.m	5132.23 sq.ft



FLOOR
Plans

Pelagia is masterfully positioned to capture the most stunning views of the island's coastline. This exceptional development flawlessly blends unrivalled scenic vistas with an idyllic residential experience.

Ground Floor *plan*



- 1 MAIN ENTRANCE
- 2 LOUNGE
- 3 RECEPTION
- 4 LIFT LOBBY
- 5 LIFT
- 6 GYM
- 7 SHOWERS & LOCKERS (M)
- 8 SHOWERS & LOCKERS (F)
- 9 POD BATH
- 10 RETAILS
- 11 KIDS PLAY AREA
- 12 POOL
- 13 KIDS POOL
- 14 POOL DECK
- 15 JACUZZI
- 16 SPLASH PAD
- 17 KIDS PLAY AREA
- 18 SITTING AREA
- 19 ACCESS TO LOWER PARKING
- 20 ACCESS TO PARKING ENTRANCE
- 21 DROP OFF
- 22 LOADING & UNLOADING

First Floor *plan*



- 1 BHK - TYPE A
- 1 BHK - TYPE B
- 1 BHK - TYPE C
- 1 BHK - TYPE D
- 2 BHK - TYPE A
- 2 BHK - TYPE B
- 2 BHK - TYPE C
- 3 BHK - TYPE A

Second Floor *plan*



- 1 BHK - TYPE A
- 1 BHK - TYPE B
- 1 BHK - TYPE C
- 1 BHK - TYPE D
- 2 BHK - TYPE A
- 2 BHK - TYPE B
- 2 BHK - TYPE C
- 3 BHK - TYPE A

Third Floor plan



- 1 BHK - TYPE A
- 1 BHK - TYPE B
- 1 BHK - TYPE C
- 1 BHK - TYPE D
- 1 BHK - TYPE E
- 2 BHK - TYPE D
- 3 BHK - TYPE B

Fourth Floor *plan*



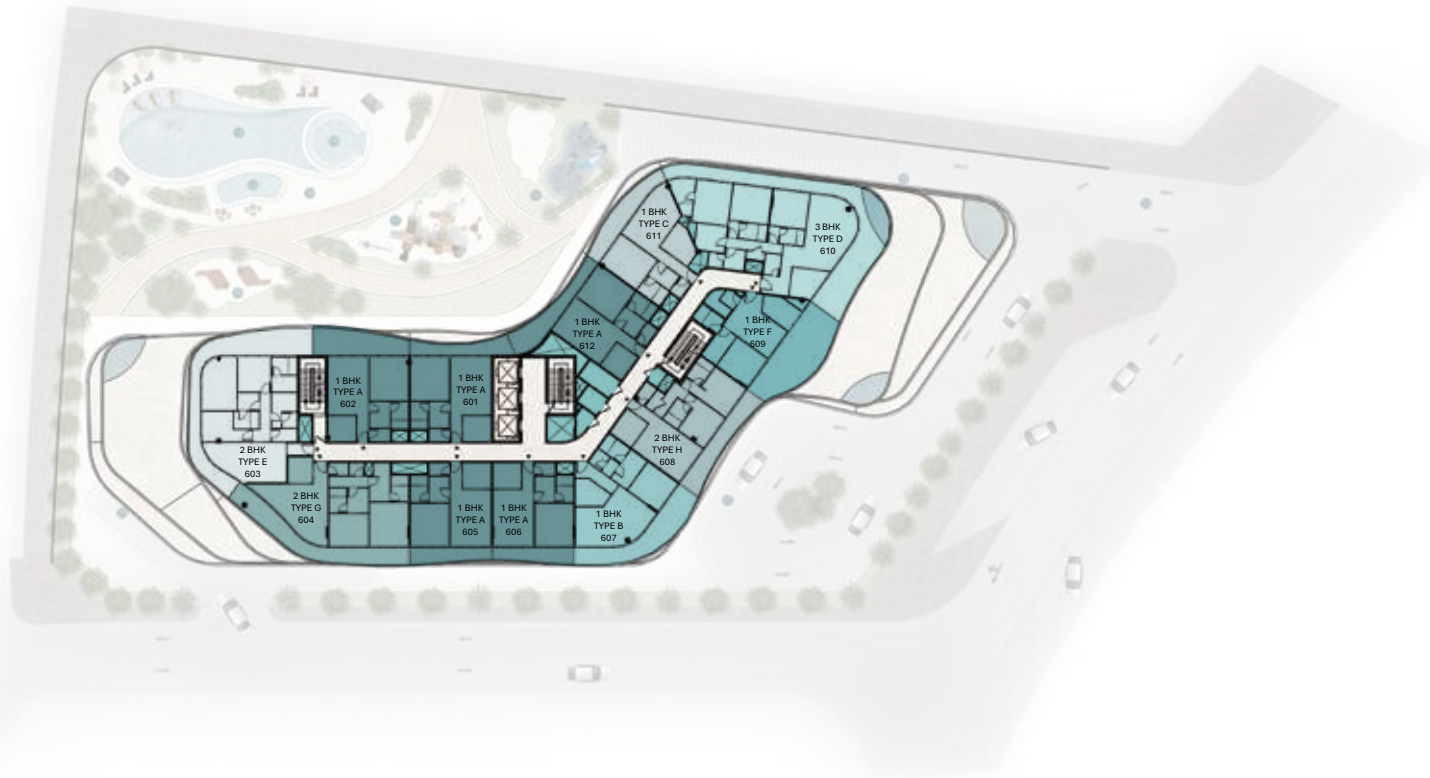
- 1 BHK - TYPE A
- 1 BHK - TYPE B
- 1 BHK - TYPE C
- 1 BHK - TYPE D
- 2 BHK - TYPE E
- 2 BHK - TYPE F
- 3 BHK - TYPE C

Fifth Floor *plan*



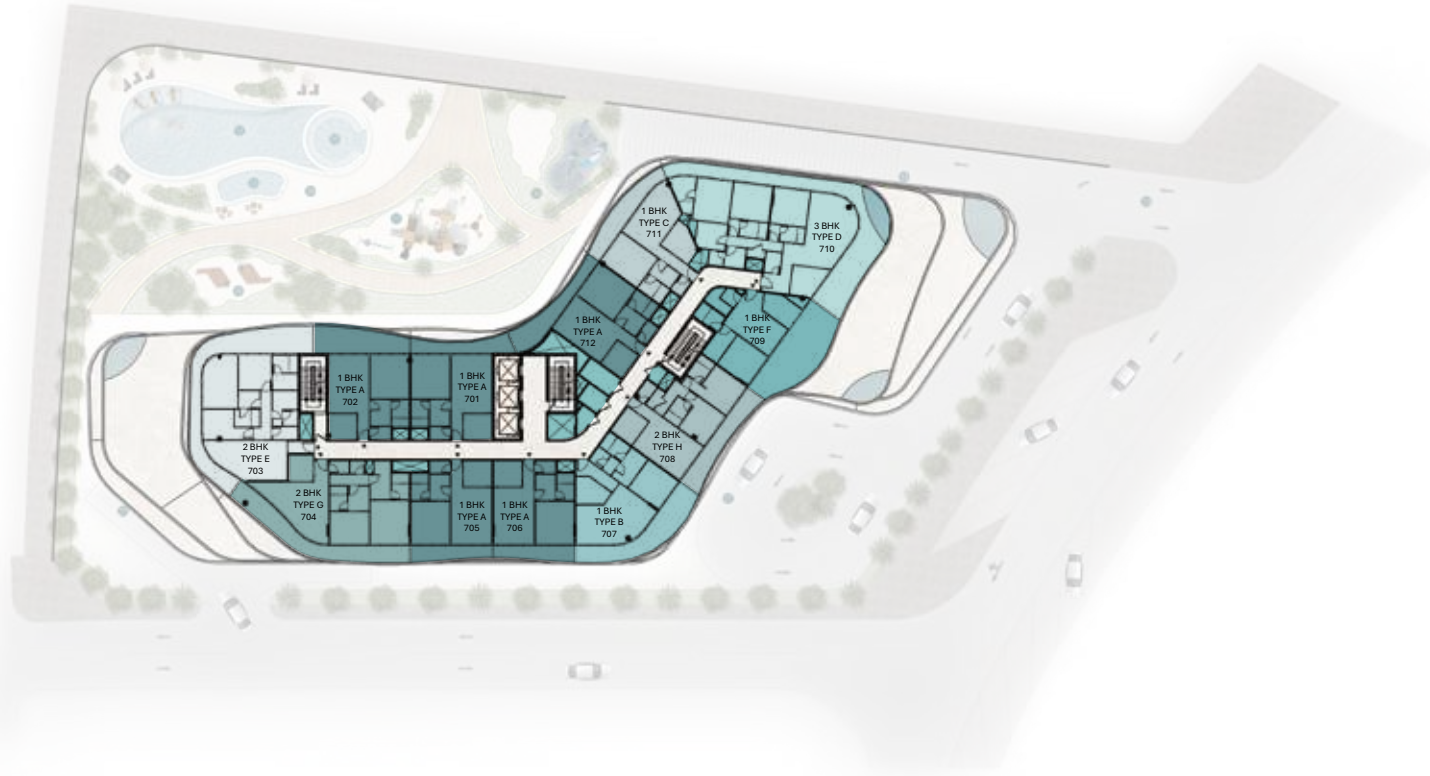
- 1 BHK - TYPE A
- 1 BHK - TYPE B
- 1 BHK - TYPE C
- 1 BHK - TYPE D
- 2 BHK - TYPE E
- 2 BHK - TYPE F
- 3 BHK - TYPE C

Sixth Floor *plan*



- 1 BHK - TYPE A
- 1 BHK - TYPE B
- 1 BHK - TYPE C
- 1 BHK - TYPE F
- 2 BHK - TYPE E
- 2 BHK - TYPE G
- 2 BHK - TYPE H
- 3 BHK - TYPE D

Seventh Floor *plan*



- 1 BHK - TYPE A
- 1 BHK - TYPE B
- 1 BHK - TYPE C
- 1 BHK - TYPE F
- 2 BHK - TYPE E
- 2 BHK - TYPE G
- 2 BHK - TYPE H
- 3 BHK - TYPE D

Eighth Floor *plan*



- 1 BHK - TYPE A
- 1 BHK - TYPE B
- 1 BHK - TYPE C
- 1 BHK - TYPE F
- 2 BHK - TYPE E
- 2 BHK - TYPE G
- 2 BHK - TYPE H
- 3 BHK - TYPE D

Ninth Floor *plan*



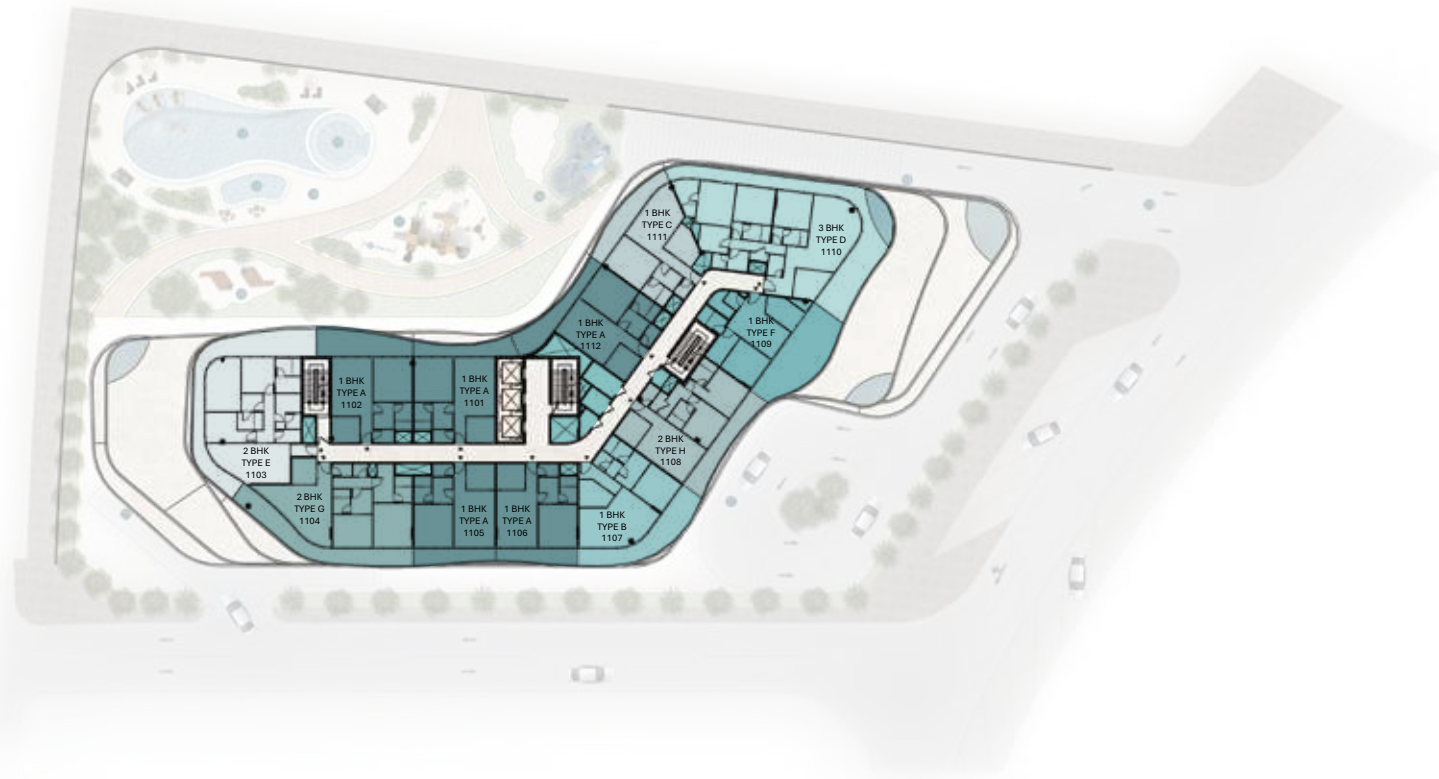
- 1 BHK - TYPE A
- 1 BHK - TYPE B
- 1 BHK - TYPE C
- 1 BHK - TYPE F
- 2 BHK - TYPE E
- 2 BHK - TYPE G
- 2 BHK - TYPE H
- 3 BHK - TYPE D

Tenth Floor *plan*



- 1 BHK - TYPE A
- 1 BHK - TYPE B
- 1 BHK - TYPE C
- 1 BHK - TYPE F
- 2 BHK - TYPE E
- 2 BHK - TYPE G
- 2 BHK - TYPE H
- 3 BHK - TYPE D

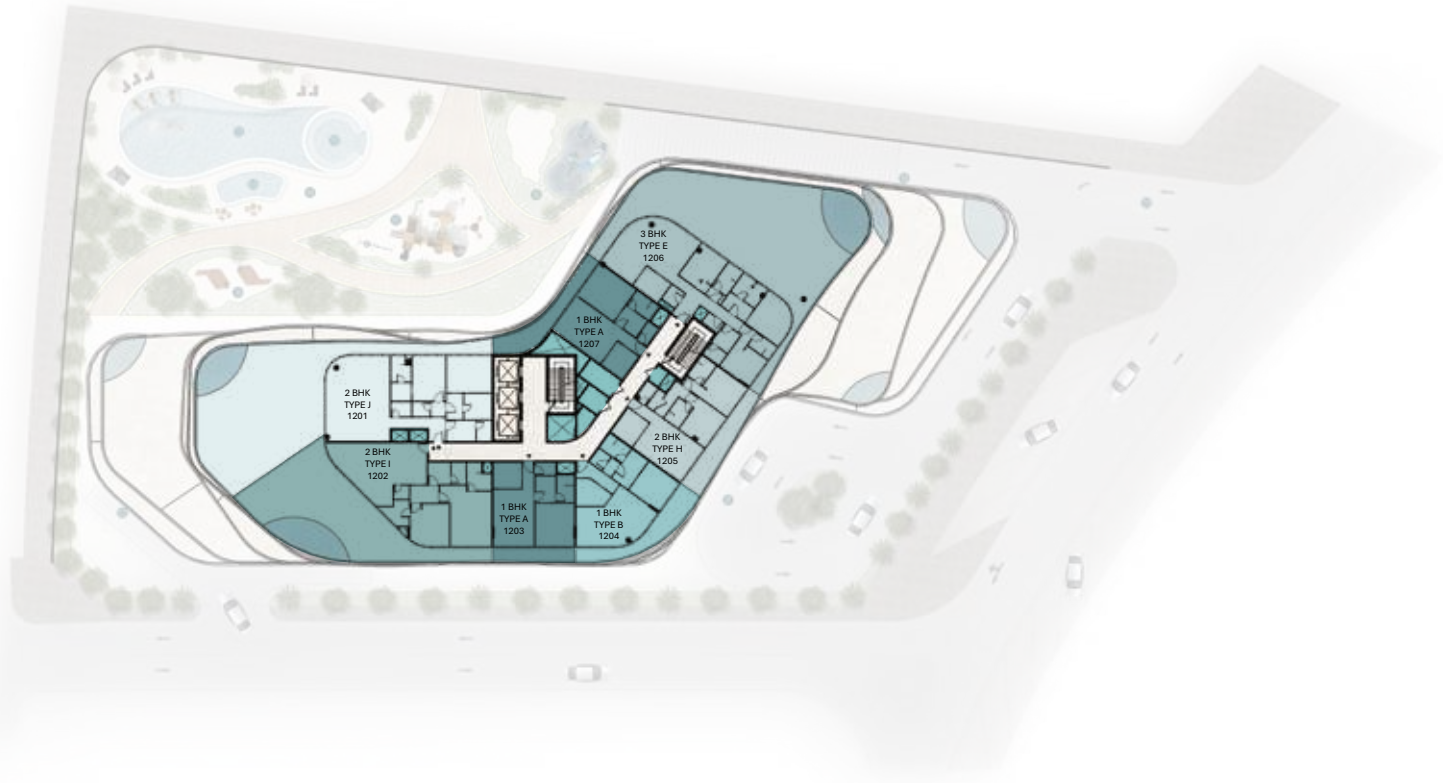
Eleventh Floor *plan*



- 1 BHK - TYPE A
- 1 BHK - TYPE B
- 1 BHK - TYPE C
- 1 BHK - TYPE F
- 2 BHK - TYPE E
- 2 BHK - TYPE G
- 2 BHK - TYPE H
- 3 BHK - TYPE D

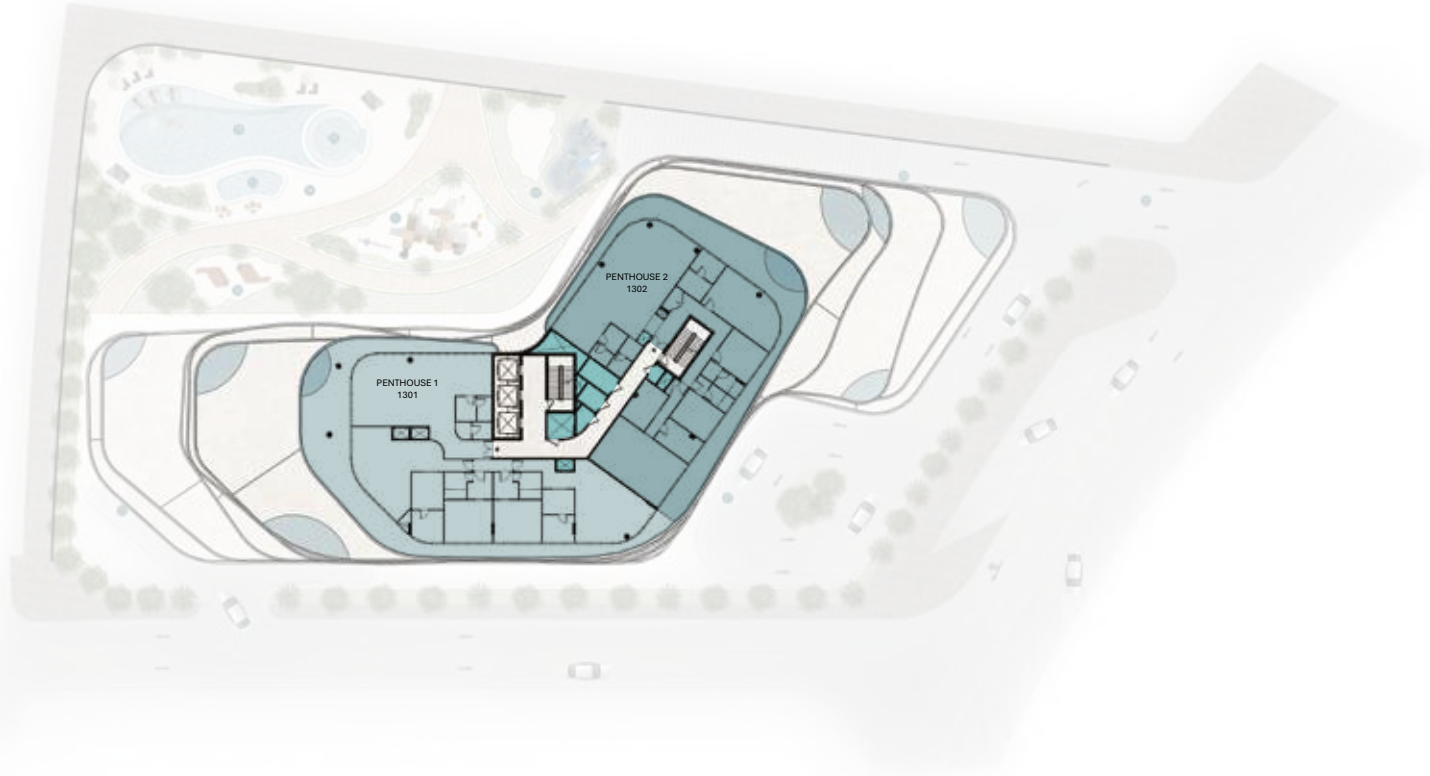
Disclaimer: All dimensions, materials and drawings are approximate. Information is subject to change without notice at the developer's absolute discretion. The actual area may vary from the stated area. Drawings are not to scale. All images used are for illustrative purposes only and do not represent the actual size, features, specifications, fittings, and furnishings. The developer reserves the right to make revisions/alterations at the absolute discretion without any liability whatsoever.

Twelfth Floor *plan*



- 1 BHK - TYPE A
- 1 BHK - TYPE B
- 2 BHK - TYPE H
- 2 BHK - TYPE I
- 2 BHK - TYPE J
- 3 BHK - TYPE E

Thirteenth Floor *plan*

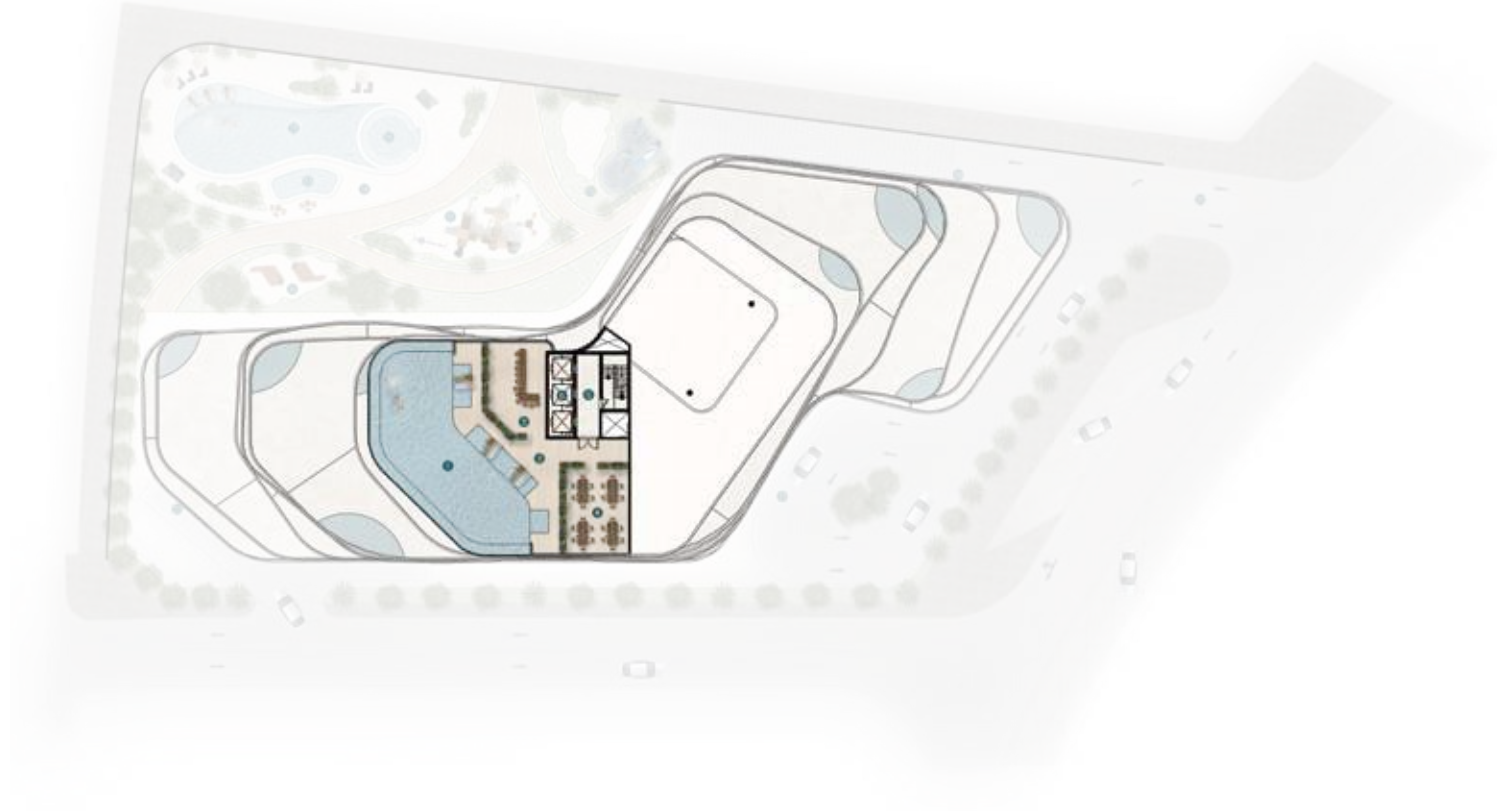


PENTHOUSE 1



PENTHOUSE 2

Roof Floor *plan*



- 1 POOL
- 2 POOL DECK
- 3 POOL BAR AREA
- 4 POOL SITTING AREA
- 5 LIFT LOBBY
- 6 LIFT



Pelagia

BY BNW DEVELOPMENTS

BNW

BNW DEVELOPMENTS

بي ان دبليو للتطوير العقاري

24th & 33rd Floor, Ubra Tower, Business Bay, Dubai, UAE

☎ 800BNWUAE

🌐 BNW.AE

✉ INFO@BNW.AE