

## Dubai Palm Jebel Ali Villas exclusivas frente a la playa



### Precios y Costos

Precio de compra	Precio en demanda
------------------	-------------------

### Detalles de la propiedad

Área total	786,43 m <sup>2</sup>
Número de habitaciones	5
Condición de la propiedad	Primer uso
viejo edificio nuevo /	Nuevo edificio
Estado de Venta	Abierto

### Características

Categorización general	Lujoso
Baño	Ducha
Cocina	Abierto
Air-conditioned	Sí
Ascensor, ascensor	Personas
amueblada	completamente
Televisión por cable/satélite	Sí
Características de seguridad	Cámara
Storage	Sí

personas mayores

Sí

## Descripción de la vivienda

Adéntrese en un mundo donde el arte arquitectónico y la belleza natural se unen. Cada villa de esta colección es una obra maestra de diseño contemporáneo que combina sofisticación minimalista con una elegancia atemporal. Los amplios planos maximizan la luz natural y las vistas al mar, creando una conexión fluida entre los espacios interiores y el sereno entorno costero. La elegante fachada presenta un perfil geométrico audaz, complementado por acabados refinados y materiales de alta calidad. Las amplias terrazas y salones en la azotea ofrecen panoramas impresionantes, invitando a los residentes a relajarse con los sonidos calmantes del mar. Los interiores están diseñados para promover el bienestar y la tranquilidad, con áreas de estar abiertas, baños lujosos con total privacidad y cocinas personalizadas para la vida moderna. Las viviendas utilizan materiales y colores naturales que fortalecen la conexión con el entorno costero. Los jardines privados conducen directamente a las playas de arena, ofreciendo un estilo de vida exclusivo junto al mar. Esta colección cuidadosamente seleccionada garantiza una experiencia residencial excepcional que inspira creatividad, paz y confort cada día.

## Localización

Situado en el prestigioso distrito sur de Dubái, Palm Jebel Ali ofrece una combinación única de impresionante belleza natural y comodidad urbana. Esta comunidad costera cuenta con la costa más larga de la ciudad, rodeada de playas de arena blanca prístina, aguas color azul celeste y exuberante vegetación. A pocos minutos del vibrante centro de Dubái y conectada fácilmente por la Sheikh Zayed Road (E11), los residentes disfrutan de acceso rápido a tiendas, restaurantes y entretenimiento de clase mundial. El entorno tranquilo, impregnado de paisajes tropicales, hace de este lugar un destino deseado para quienes buscan la armonía entre la vida urbana y la serenidad natural.

## Características

Este exclusivo vecindario cuenta con calles privadas cuidadosamente planificadas, senderos peatonales y rutas para bicicletas rodeados de flora vibrante. Los residentes disponen de comodidades de cinco estrellas que incluyen acceso seguro, entradas privadas a la playa, jardines exuberantes y amplias terrazas con vistas panorámicas al mar. La comunidad fomenta un estilo de vida activo con paseos sombreados y parques que promueven la relajación y el bienestar. Otros servicios destacados incluyen espacios de estacionamiento asignados, ascensores modernos, sistemas de seguridad de última generación y espacios habitables que integran perfectamente el interior y el exterior para mayor confort y elegancia.

## Otros

Aviso legal: los planos, detalles y la orientación de las unidades incluidos son solo indicativos y están sujetos a cambios por parte del desarrollador/vendedor a su entera discreción sin previo aviso y/o responsabilidad. Todas las imágenes, incluidas las características, acabados, muebles, vistas y escalas, son solo ilustrativas. Las áreas, orientaciones, dimensiones, distribuciones y materiales finales pueden diferir de los indicados.

## Dirección

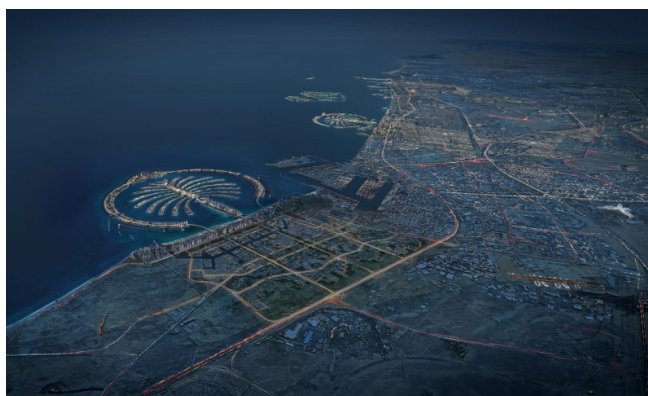
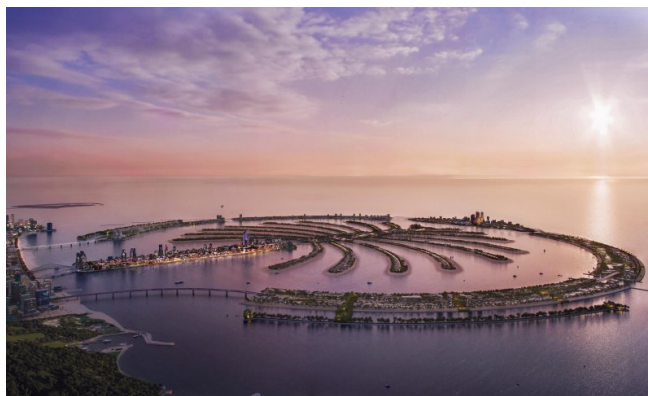
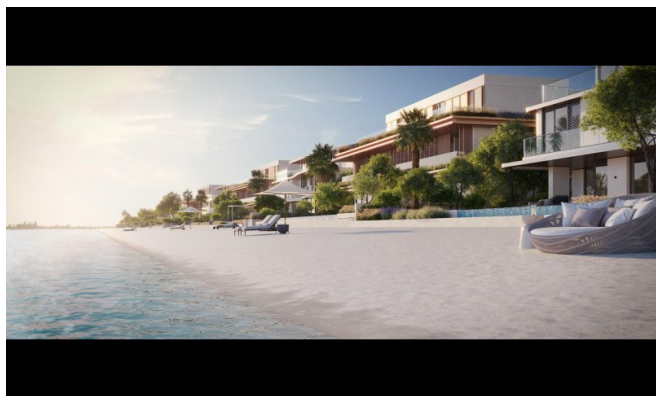
Palm Jebel Ali

## Proveedor

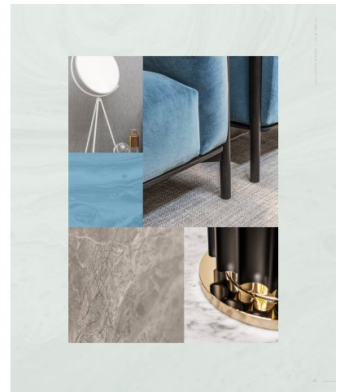
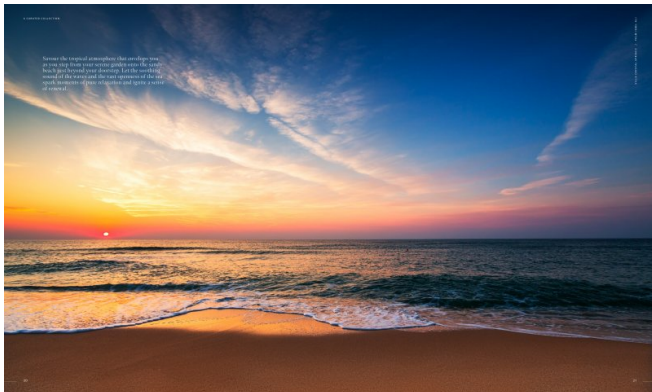
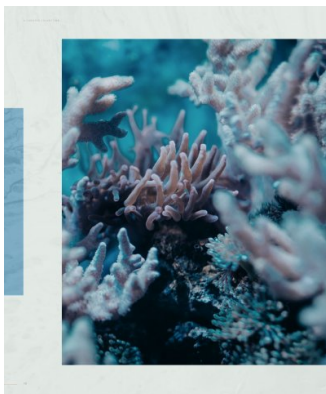
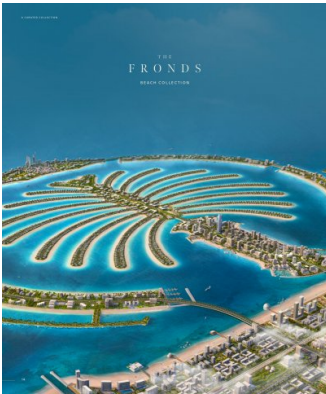
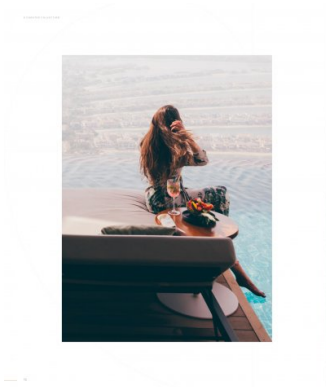
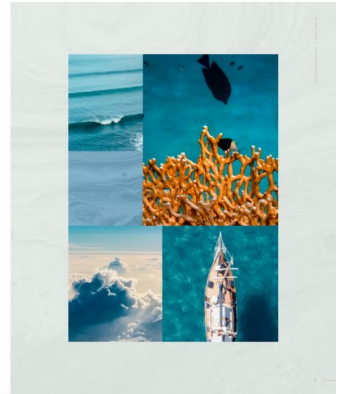
TANAMI PROPERTIES  
Al Marsa Street  
3405 Marina Plaza

Centralita  
Correo electrónico  
Sitio web

+971 4 248 3400  
[office@ihr-makler.cc](mailto:office@ihr-makler.cc)  
[victoriacrigan@tanamiproperties.ae](mailto:victoriacrigan@tanamiproperties.ae)



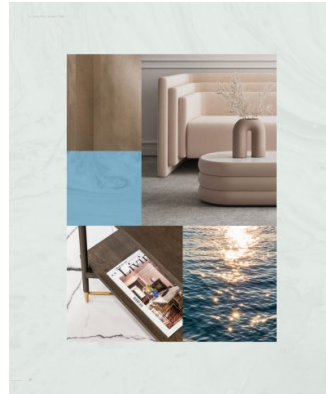




Exceptional design, a breathtaking beachfront location, and the exclusivity of a private neighbourhood, all crafted to impress.

UNIQUE INVESTMENT OPPORTUNITY

The Beach Collection offers these advantages: prime location, world-class architecture, and a private neighbourhood. The Beach Collection offers these advantages: prime location, world-class architecture, and a private neighbourhood. The Beach Collection offers these advantages: prime location, world-class architecture, and a private neighbourhood.



LIVE IN A MASTERPIECE

OWN A PIECE OF HISTORY

The Laguna Beach Villas

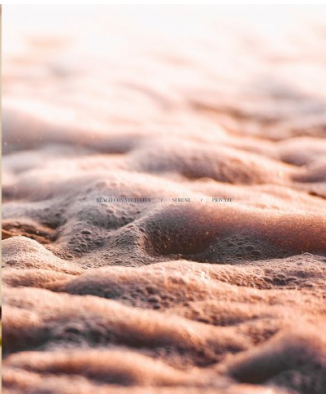
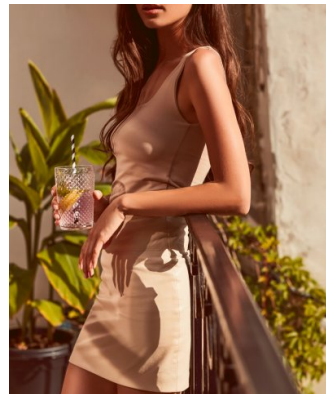
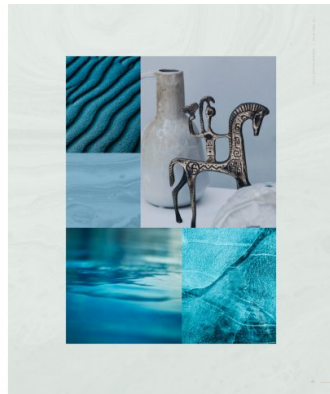
WELCOMING WATERFRONT RESIDENCES

THE BEACH COLLECTION OFFERS THESE ADVANTAGES: PRIME LOCATION, WORLD-CLASS ARCHITECTURE, AND A PRIVATE NEIGHBOURHOOD.



Located on the exclusive fronds, each residence offers direct access to the beach, nestled within a private neighbourhood that inspires serenity.

THE BEACH COLLECTION OFFERS THESE ADVANTAGES: PRIME LOCATION, WORLD-CLASS ARCHITECTURE, AND A PRIVATE NEIGHBOURHOOD.



CRYSTAL SPRINGS

THE BEACH COLLECTION OFFERS THESE ADVANTAGES: PRIME LOCATION, WORLD-CLASS ARCHITECTURE, AND A PRIVATE NEIGHBOURHOOD.

STEP UP TO NEW HEIGHTS OF EXCLUSIVITY

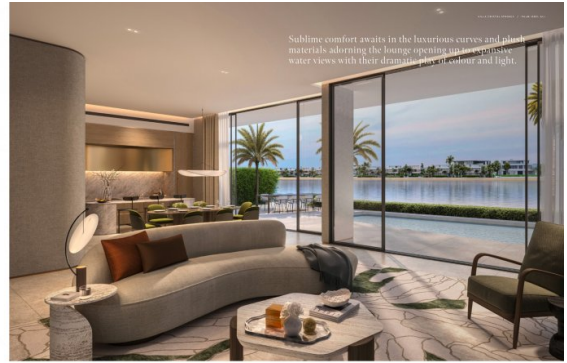
THE BEACH COLLECTION OFFERS THESE ADVANTAGES: PRIME LOCATION, WORLD-CLASS ARCHITECTURE, AND A PRIVATE NEIGHBOURHOOD.







THE BRILLIANT FACADE IS A BEAUTIFUL CONTRAST AND TESTAMENT TO THE EXCELLENT DESIGN WHICH WAS THE FOUNDATION OF THE VILLA'S FINEST PARTS.



Sublime comfort awaits in the luxurious curves and plush materials adorning the lounge opening up an extensive water view with their dramatic play of colour and light.

This refined residence invites nature indoors with natural materials and seamless indoor-outdoor space.

THE AMBIENT MATERIALS

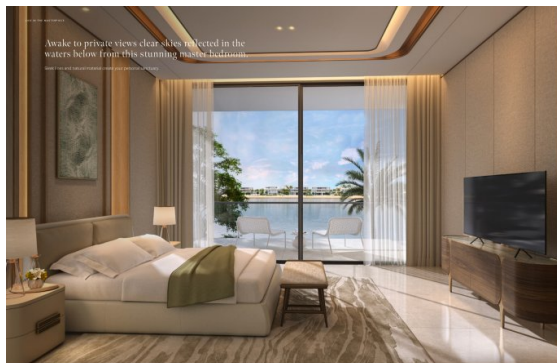
WOODEN PANELS AND STONE WALLS COMPLEMENT THE AMBIENT LIGHTING AND THE NATURAL MATERIALS, CREATING A SEAMLESS AND INVITING SPACE. THE DESIGNERS HAVE CHOSEN TO USE ONLY THE BEST QUALITY MATERIALS TO ACHIEVE A TIMELESS AND ENDURING INTERIOR.



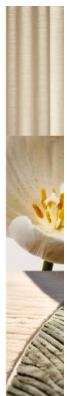
THE CURVED STAIRCASE AND THE AMBIENT LIGHTING COMPLEMENT THE AMBIENT LIGHTING AND THE NATURAL MATERIALS, CREATING A SEAMLESS AND INVITING SPACE.



INSPIRED BY THE DESIGNERS' VISION, THE INTERIOR OF THE VILLA HAS BEEN DESIGNED TO BE A SEAMLESS AND INVITING SPACE, WITH A FOCUS ON THE BEST QUALITY MATERIALS AND THE AMBIENT LIGHTING.



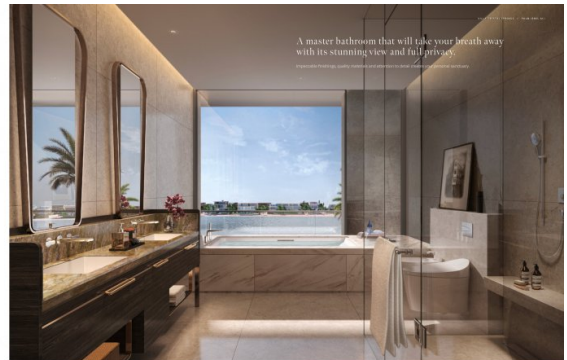
Awake to private views clear skies reflected in the waters below from this stunning master bedroom.



Live beyond expectations in this minimalist designed villa where intricate details create the difference.

A HOME THAT INSPIRES WELLNESS

THE VILLA'S DESIGNERS HAVE CHOSEN TO USE ONLY THE BEST QUALITY MATERIALS TO ACHIEVE A TIMELESS AND ENDURING INTERIOR. THE AMBIENT LIGHTING AND THE NATURAL MATERIALS, CREATING A SEAMLESS AND INVITING SPACE.



A master bathroom that will take your breath away with its stunning view and full privacy.



BEACH HILLS COLLECTION

VILLA  
CRYSTAL SPRINGS  
3+1

3 BEDROOMS - FAMILY ROOM  
3 POOL LOBBY AND TERRACE

PRICE	
Estimated	1.280.000 €
Minimum Price (including VAT)	1.408.000 €
Maximum Price	1.536.000 €
Minimum Price (including VAT)	1.664.000 €
Maximum Price (including VAT)	1.792.000 €
Price per sqm	100 €
Price per sqm (including VAT)	112 €
Price per sqm (including VAT)	124 €
Price per sqm (including VAT)	136 €
Price per sqm (including VAT)	148 €
Price per sqm (including VAT)	160 €
Price per sqm (including VAT)	172 €
Price per sqm (including VAT)	184 €
Price per sqm (including VAT)	196 €
Price per sqm (including VAT)	208 €
Price per sqm (including VAT)	220 €
Price per sqm (including VAT)	232 €
Price per sqm (including VAT)	244 €
Price per sqm (including VAT)	256 €
Price per sqm (including VAT)	268 €
Price per sqm (including VAT)	280 €
Price per sqm (including VAT)	292 €
Price per sqm (including VAT)	304 €
Price per sqm (including VAT)	316 €
Price per sqm (including VAT)	328 €
Price per sqm (including VAT)	340 €
Price per sqm (including VAT)	352 €
Price per sqm (including VAT)	364 €
Price per sqm (including VAT)	376 €
Price per sqm (including VAT)	388 €
Price per sqm (including VAT)	400 €
Price per sqm (including VAT)	412 €
Price per sqm (including VAT)	424 €
Price per sqm (including VAT)	436 €
Price per sqm (including VAT)	448 €
Price per sqm (including VAT)	460 €
Price per sqm (including VAT)	472 €
Price per sqm (including VAT)	484 €
Price per sqm (including VAT)	496 €
Price per sqm (including VAT)	508 €
Price per sqm (including VAT)	520 €
Price per sqm (including VAT)	532 €
Price per sqm (including VAT)	544 €
Price per sqm (including VAT)	556 €
Price per sqm (including VAT)	568 €
Price per sqm (including VAT)	580 €
Price per sqm (including VAT)	592 €
Price per sqm (including VAT)	604 €
Price per sqm (including VAT)	616 €
Price per sqm (including VAT)	628 €
Price per sqm (including VAT)	640 €
Price per sqm (including VAT)	652 €
Price per sqm (including VAT)	664 €
Price per sqm (including VAT)	676 €
Price per sqm (including VAT)	688 €
Price per sqm (including VAT)	700 €
Price per sqm (including VAT)	712 €
Price per sqm (including VAT)	724 €
Price per sqm (including VAT)	736 €
Price per sqm (including VAT)	748 €
Price per sqm (including VAT)	760 €
Price per sqm (including VAT)	772 €
Price per sqm (including VAT)	784 €
Price per sqm (including VAT)	796 €
Price per sqm (including VAT)	808 €
Price per sqm (including VAT)	820 €
Price per sqm (including VAT)	832 €
Price per sqm (including VAT)	844 €
Price per sqm (including VAT)	856 €
Price per sqm (including VAT)	868 €
Price per sqm (including VAT)	880 €
Price per sqm (including VAT)	892 €
Price per sqm (including VAT)	904 €
Price per sqm (including VAT)	916 €
Price per sqm (including VAT)	928 €
Price per sqm (including VAT)	940 €
Price per sqm (including VAT)	952 €
Price per sqm (including VAT)	964 €
Price per sqm (including VAT)	976 €
Price per sqm (including VAT)	988 €
Price per sqm (including VAT)	1000 €

