

Dubai Palm Jebel Ali Villas exclusivas frente a la playa



Precios y Costos

Precio de compra

Precio en demanda

Detalles de la propiedad

Área total

786,43 m²

Número de habitaciones

5

Condición de la propiedad

Primer uso

viejo edificio nuevo /

Nuevo edificio

Estado de Venta

Abierto

Características

Categorización general

Lujoso

Baño

Ducha

Cocina

Abierto

Air-conditioned

Sí

Ascensor, ascensor

Personas

amueblada

completamente

Televisión por cable/satélite

Sí

Características de seguridad

Cámara

Storage

Sí

personas mayores

Sí

Descripción de la vivienda

Adéntrese en un mundo donde el arte arquitectónico y la belleza natural se unen. Cada villa de esta colección es una obra maestra de diseño contemporáneo que combina sofisticación minimalista con una elegancia atemporal. Los amplios planos maximizan la luz natural y las vistas al mar, creando una conexión fluida entre los espacios interiores y el sereno entorno costero. La elegante fachada presenta un perfil geométrico audaz, complementado por acabados refinados y materiales de alta calidad. Las amplias terrazas y salones en la azotea ofrecen panoramas impresionantes, invitando a los residentes a relajarse con los sonidos calmantes del mar. Los interiores están diseñados para promover el bienestar y la tranquilidad, con áreas de estar abiertas, baños lujosos con total privacidad y cocinas personalizadas para la vida moderna. Las viviendas utilizan materiales y colores naturales que fortalecen la conexión con el entorno costero. Los jardines privados conducen directamente a las playas de arena, ofreciendo un estilo de vida exclusivo junto al mar. Esta colección cuidadosamente seleccionada garantiza una experiencia residencial excepcional que inspira creatividad, paz y confort cada día.

Localización

Situado en el prestigioso distrito sur de Dubái, Palm Jebel Ali ofrece una combinación única de impresionante belleza natural y comodidad urbana. Esta comunidad costera cuenta con la costa más larga de la ciudad, rodeada de playas de arena blanca prístina, aguas color azul celeste y exuberante vegetación. A pocos minutos del vibrante centro de Dubái y conectada fácilmente por la Sheikh Zayed Road (E11), los residentes disfrutan de acceso rápido a tiendas, restaurantes y entretenimiento de clase mundial. El entorno tranquilo, impregnado de paisajes tropicales, hace de este lugar un destino deseado para quienes buscan la armonía entre la vida urbana y la serenidad natural.

Características

Este exclusivo vecindario cuenta con calles privadas cuidadosamente planificadas, senderos peatonales y rutas para bicicletas rodeados de flora vibrante. Los residentes disponen de comodidades de cinco estrellas que incluyen acceso seguro, entradas privadas a la playa, jardines exuberantes y amplias terrazas con vistas panorámicas al mar. La comunidad fomenta un estilo de vida activo con paseos sombreados y parques que promueven la relajación y el bienestar. Otros servicios destacados incluyen espacios de estacionamiento asignados, ascensores modernos, sistemas de seguridad de última generación y espacios habitables que integran perfectamente el interior y el exterior para mayor confort y elegancia.

Otros

Aviso legal: los planos, detalles y la orientación de las unidades incluidos son solo indicativos y están sujetos a cambios por parte del desarrollador/vendedor a su entera discreción sin previo aviso y/o responsabilidad. Todas las imágenes, incluidas las características, acabados, muebles, vistas y escalas, son solo ilustrativas. Las áreas, orientaciones, dimensiones, distribuciones y materiales finales pueden diferir de los indicados.

Dirección

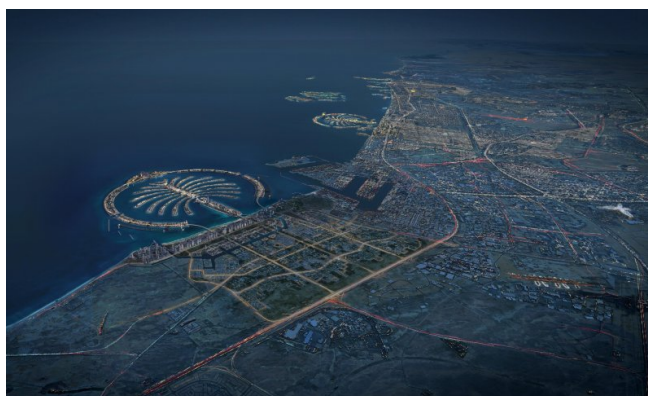
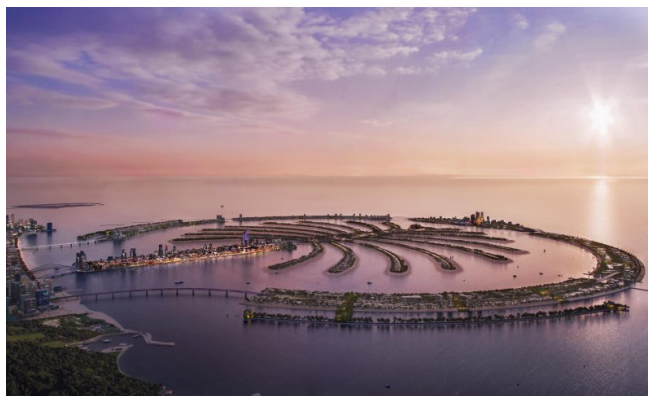
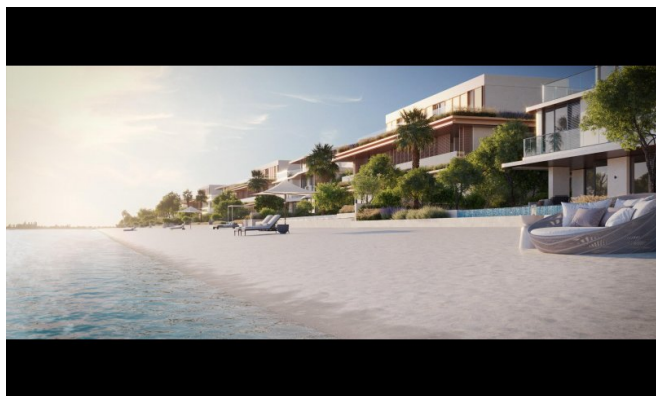
Palm Jebel Ali

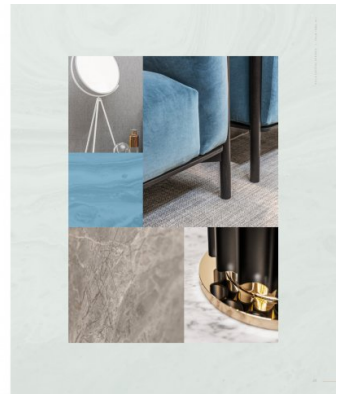
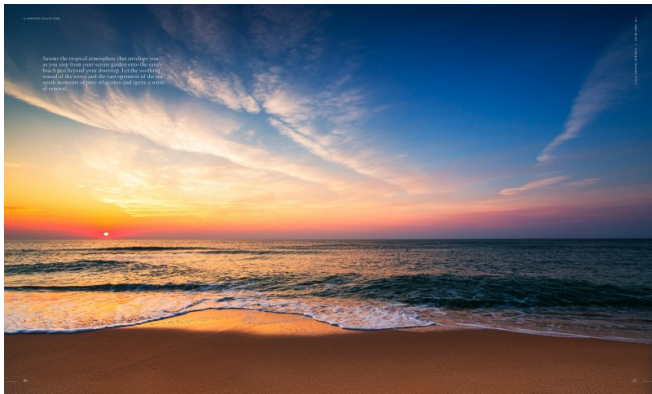
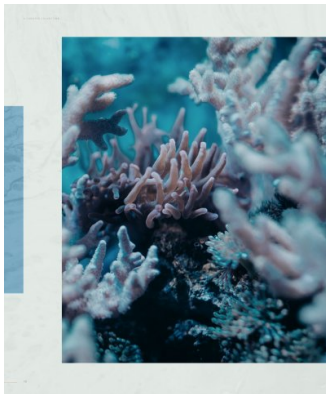
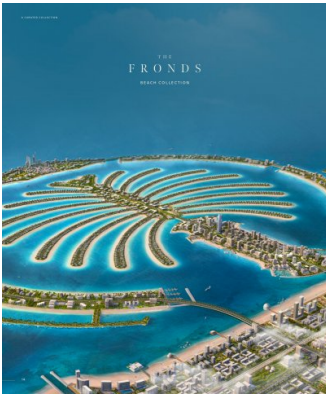
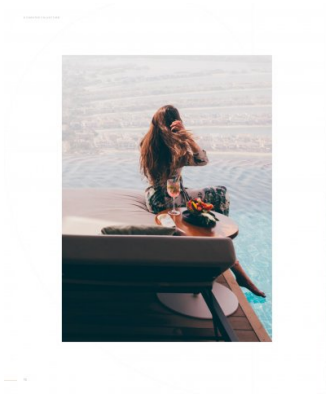
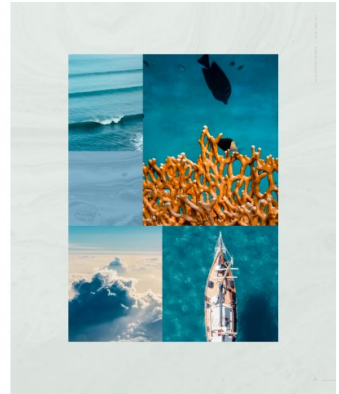
Proveedor

TANAMI PROPERTIES
Al Marsa Street
3405 Marina Plaza

Centralita
Correo electrónico
Sitio web

+971 4 248 3400
office@ihr-makler.cc
victoriacrigan@tanamiproperties.ae





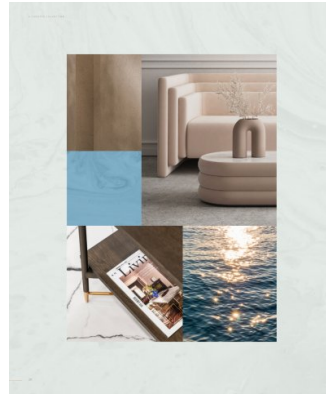
Exceptional design, a breathtaking beachfront location, and the exclusivity of a private neighbourhood, all crafted to impress.

UNIQUE BEACHFRONT RESIDENCES

The Beach Collection offers these residences in a prime location, overlooking the sea, with a private beach and a swimming pool. The residences are designed to offer a luxurious lifestyle, with a private beach and a swimming pool. The residences are designed to offer a luxurious lifestyle, with a private beach and a swimming pool.

UNIQUE BEACHFRONT RESIDENCES

The Beach Collection offers these residences in a prime location, overlooking the sea, with a private beach and a swimming pool. The residences are designed to offer a luxurious lifestyle, with a private beach and a swimming pool. The residences are designed to offer a luxurious lifestyle, with a private beach and a swimming pool.



LIVE IN A MASTERPIECE

OWN A PIECE OF HISTORY

The Unique Beach Villas

The residences are designed to offer a luxurious lifestyle, with a private beach and a swimming pool. The residences are designed to offer a luxurious lifestyle, with a private beach and a swimming pool. The residences are designed to offer a luxurious lifestyle, with a private beach and a swimming pool.

WELCOMING WATERFRONT RESIDENCES

The Unique Beach Villas

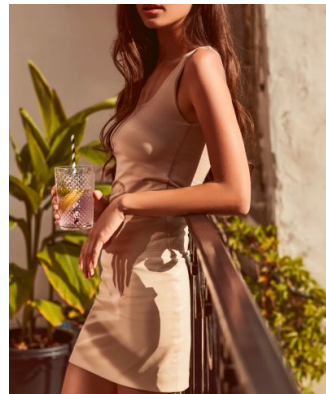
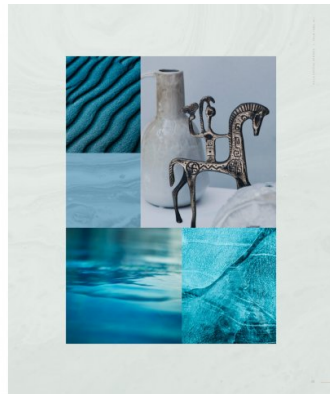
The residences are designed to offer a luxurious lifestyle, with a private beach and a swimming pool. The residences are designed to offer a luxurious lifestyle, with a private beach and a swimming pool. The residences are designed to offer a luxurious lifestyle, with a private beach and a swimming pool.



Located on the exclusive fronds, each residence offers direct access to the beach, nestled within a private neighbourhood that inspires serenity.

UNIQUE BEACHFRONT RESIDENCES

The Beach Collection offers these residences in a prime location, overlooking the sea, with a private beach and a swimming pool. The residences are designed to offer a luxurious lifestyle, with a private beach and a swimming pool. The residences are designed to offer a luxurious lifestyle, with a private beach and a swimming pool.



CRYSTAL SPRINGS

The Residence Project

The residences are designed to offer a luxurious lifestyle, with a private beach and a swimming pool. The residences are designed to offer a luxurious lifestyle, with a private beach and a swimming pool. The residences are designed to offer a luxurious lifestyle, with a private beach and a swimming pool.

STEP UP TO NEW HEIGHTS OF EXCLUSIVITY

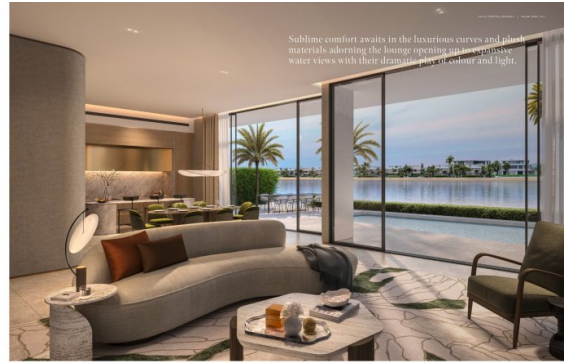
The Unique Beach Villas

The residences are designed to offer a luxurious lifestyle, with a private beach and a swimming pool. The residences are designed to offer a luxurious lifestyle, with a private beach and a swimming pool. The residences are designed to offer a luxurious lifestyle, with a private beach and a swimming pool.





THE BRILLIANT FACADE IS A BEAUTIFUL CONTRAST AND TESTAMENT TO THE EFFICIENT DESIGN WHICH MAKES THE RESIDENCE IN THE ZIRL AREA IDEAL.

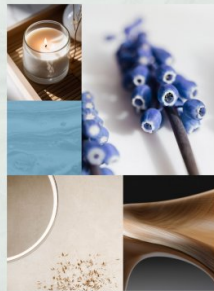


Sublime comfort awaits in the luxurious curves and plush materials adorning the lounge opening up an extensive water views with their dramatic play of colour and light.

This refined residence invites nature indoors with natural materials and seamless indoor-outdoor space.

THE RESIDENCE MATERIALS

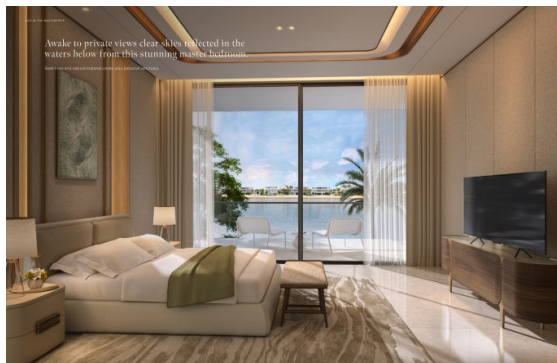
WOODEN PANELS AND STONE WALLS COMPLEMENT THE INTERIOR DESIGN, CREATING A WARM AND INVITING ATMOSPHERE. THE SEAMLESS CONNECTION BETWEEN THE INDOOR AND OUTDOOR SPACES IS ACHIEVED THROUGH THE USE OF NATURAL MATERIALS AND A COHERENT DESIGN LANGUAGE.



THE CURVED STAIRCASE AND THE WOODEN WALLS ARE A BEAUTIFUL CONTRAST AND TESTAMENT TO THE EFFICIENT DESIGN WHICH MAKES THE RESIDENCE IN THE ZIRL AREA IDEAL.



INSPIRED BY THE DESIGNER'S VISION, THE INTERIOR DESIGNER HAS CREATED A MODERN AND INVITING SPACE THAT IS BOTH FUNCTIONAL AND BEAUTIFUL. THE SEAMLESS CONNECTION BETWEEN THE INDOOR AND OUTDOOR SPACES IS ACHIEVED THROUGH THE USE OF NATURAL MATERIALS AND A COHERENT DESIGN LANGUAGE.



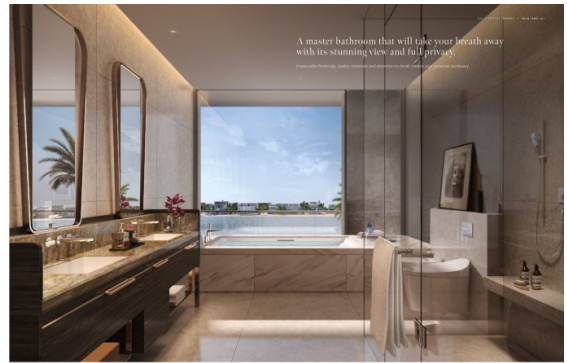
Awake to private views, clear skies reflected in the waters below from this stunning master bedroom.



Live beyond expectations in this minimalist designed villa where intricate details create the difference.

A BOLD AND MODERN MATERIALS

THE USE OF NATURAL MATERIALS AND STONE WALLS COMPLEMENT THE INTERIOR DESIGN, CREATING A WARM AND INVITING ATMOSPHERE. THE SEAMLESS CONNECTION BETWEEN THE INDOOR AND OUTDOOR SPACES IS ACHIEVED THROUGH THE USE OF NATURAL MATERIALS AND A COHERENT DESIGN LANGUAGE.



A master bathroom that will take your breath away with its stunning view and full privacy.

