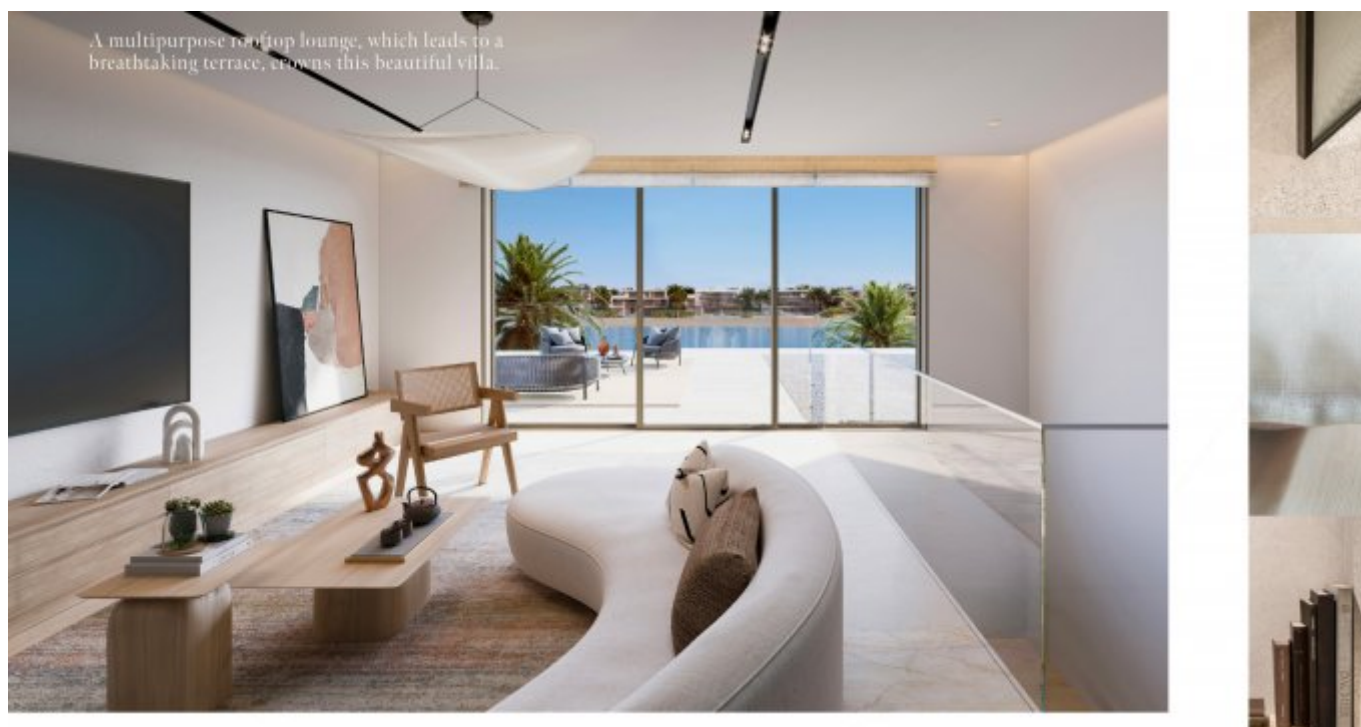


Dubai Palm Jebel Ali Villas lujosas frente a la playa



Precios y Costos

Precio de compra	Precio en demanda
------------------	-------------------

Detalles de la propiedad

Área total	678,91 m ²
Número de habitaciones	6
Condición de la propiedad	Primer uso
viejo edificio nuevo /	Nuevo edificio
Estado de Venta	Abierto

Características

Categorización general	Lujoso
Baño	Ducha
Cocina	Abierto
Air-conditioned	Sí
Ascensor, ascensor	Personas
amueblada	completamente
Televisión por cable/satélite	Sí
Características de seguridad	Cámara
Storage	Sí

personas mayores

Sí

Descripción de la vivienda

Vive en una obra maestra arquitectónica donde el diseño contemporáneo se une con la belleza natural. Cada villa de esta exclusiva colección está meticulosamente diseñada con fachadas geométricas audaces y acabados elegantes que elevan la experiencia de vida costera. Los planos espaciosos maximizan la luz natural y enmarcan vistas impresionantes al mar, creando una transición fluida entre el confort interior y la serenidad exterior.

Adéntrate en espacios de vida luminosos y abiertos que combinan lujo y bienestar, con ventanas de piso a techo, materiales refinados y patios privados cuidadosamente diseñados. Las cocinas modernas y los sofisticados comedores mejoran la vida diaria, mientras que las amplias terrazas y salones en la azotea ofrecen escenarios impresionantes para relajarse y entretenerse al aire libre.

Este hogar tranquilo invita a relajarse con los sonidos calmantes de las olas a tu puerta, donde los jardines exuberantes se extienden directamente a playas inmaculadas. El diseño incorpora elementos tradicionales inspirados en la arquitectura vernácula y pantallas arabescas, combinados con acristalamientos modernos que enmarcan espectaculares panoramas frente al mar.

Cada detalle refleja un compromiso con la excelencia, desde escaleras personalizadas y espacios multifuncionales en la azotea hasta una conexión armoniosa con la naturaleza. Ubicadas en frondas privadas dentro de la comunidad, estas villas ofrecen acceso exclusivo a la playa y un estilo de vida de elegancia e inspiración sin igual. Descubre una residencia que es más que un hogar: es un estilo de vida elevado que inspira creatividad, fomenta el bienestar y celebra la belleza de la vida costera en el destino más codiciado de Dubái.

Localización

Ubicada en el prestigioso distrito sur de Dubái, Palm Jebel Ali cuenta con la costa más larga de la ciudad, con playas de arena blanca inmaculada y aguas azul celeste. A pocos minutos del centro de Dubái y conectada perfectamente a través de Sheikh Zayed Road (E11), combina la belleza natural tranquila con la comodidad urbana. Este vibrante vecindario ofrece amplios espacios verdes, enclaves privados tranquilos y acceso directo a la playa. Esta exclusiva comunidad frente al mar ofrece un equilibrio perfecto entre la vida costera serena y la proximidad a tiendas, restaurantes y entretenimiento de clase mundial.

Características

Esta comunidad frente a la playa, cuidadosamente diseñada, cuenta con calles privadas sombreadas por abundante vegetación, caminos peatonales y rutas para bicicletas que fomentan un estilo de vida activo. Los residentes disfrutan de amenidades cinco estrellas, incluyendo accesos seguros, entradas privadas a la playa, jardines paisajísticos y amplias terrazas con vistas panorámicas al mar. Las villas incluyen ascensores modernos, estacionamiento dedicado con garajes cubiertos y pérgolas, sistemas avanzados de seguridad y espacios de vida interiores-exteriores sin interrupciones. Los espacios comunes cuidadosamente diseñados crean un entorno pacífico y lujoso donde el confort y la elegancia conviven en armonía.

Otros

Aviso legal: los planos, detalles y la orientación de las unidades incluidos son solo indicativos y están sujetos a cambios por parte del desarrollador/vendedor a su

entera discreción sin previo aviso y/o responsabilidad. Todas las imágenes, incluidas las características, acabados, muebles, vistas y escalas, son solo ilustrativas. Las áreas, orientaciones, dimensiones, distribuciones y materiales finales pueden diferir de los indicados.

Dirección

Palm Jebel Ali

Proveedor

TANAMI PROPERTIES
Al Marsa Street
3405 Marina Plaza

Centralita

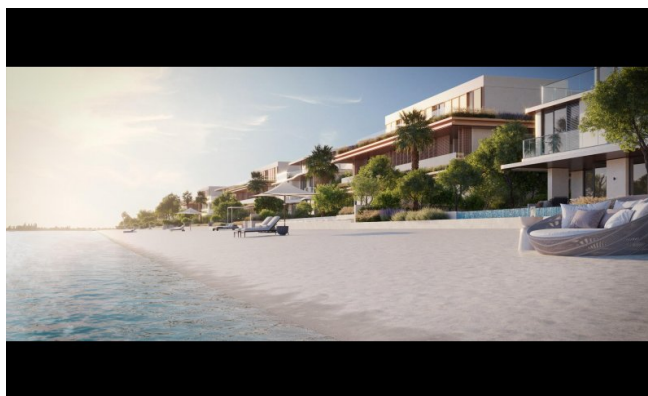
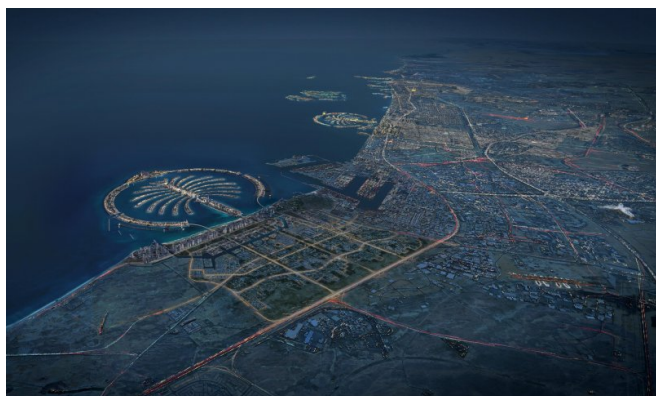
Correo electrónico

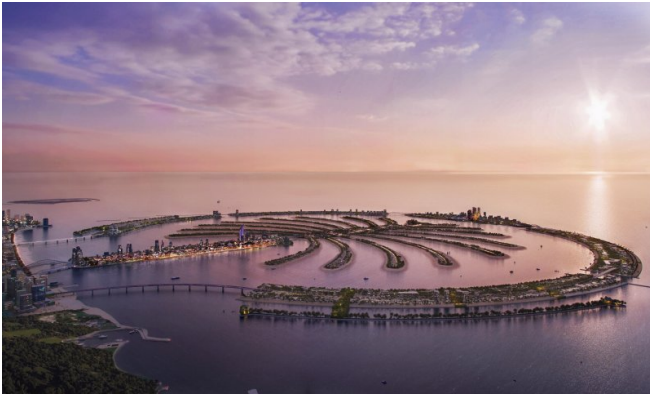
Sitio web

+971 4 248 3400

office@ihr-makler.cc

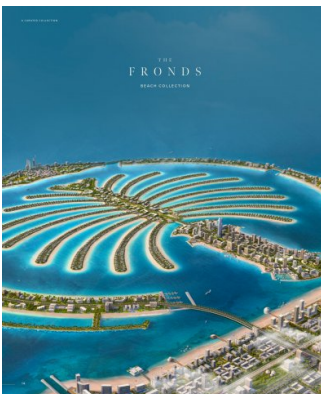
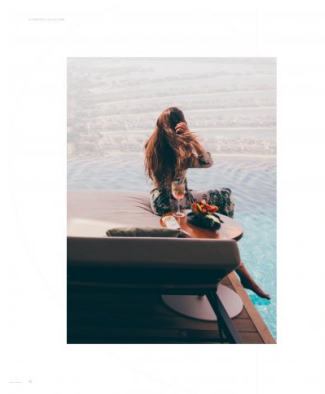
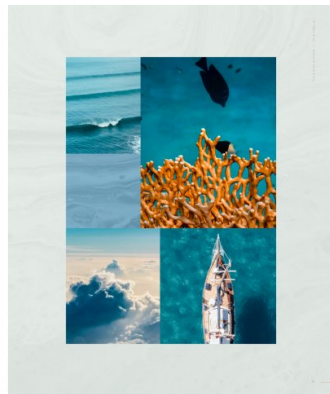
victoriacrigan@tanamiproperties.ae





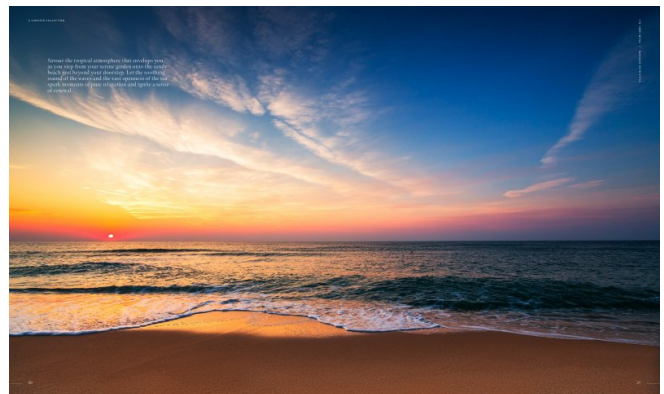
Live a life of inspiration, serenity, and comfort in Dubai's most coveted district—a vibrant blend of lush greenery, azure waters, and pristine white sands.

Look forward to an exceptional lifestyle in a community that is a true reflection of the city's spirit. The Palm Jumeirah is a world-class destination, offering a unique blend of luxury and nature. The island's artificial shape, designed to resemble a palm tree, is a testament to human ingenuity and the city's vision for a sustainable future. The Palm Jumeirah is a world-class destination, offering a unique blend of luxury and nature. The island's artificial shape, designed to resemble a palm tree, is a testament to human ingenuity and the city's vision for a sustainable future.



AN ICONIC NEIGHBOURHOOD

THE PALM JUMEIRAH IS A WORLD-CLASS DESTINATION, OFFERING A UNIQUE BLEND OF LUXURY AND NATURE. THE ISLAND'S ARTIFICIAL SHAPE, DESIGNED TO RESEMBLE A PALM TREE, IS A TESTAMENT TO HUMAN INGENUITY AND THE CITY'S VISION FOR A SUSTAINABLE FUTURE.



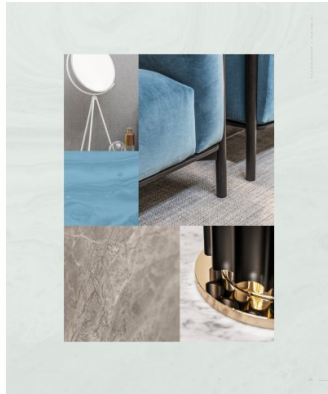


EXCEPTIONAL DESIGN, A BREATHTAKING BEACHFRONT LOCATION, AND THE EXCLUSIVITY OF A PRIVATE NEIGHBOURHOOD, ALL CRAFTED TO IMPRESS.

CRAFTED WITH CARE

EXCEPTIONAL DESIGN AND PERFECT FINISH. EXCLUSIVITY OF A PRIVATE NEIGHBOURHOOD.

A residence thoughtfully designed and crafted to provide a truly unique experience. A residence that offers the finest quality of materials and finishes, and the finest craftsmanship. A residence that is a true masterpiece.



EXCEPTIONAL DESIGN, A BREATHTAKING BEACHFRONT LOCATION, AND THE EXCLUSIVITY OF A PRIVATE NEIGHBOURHOOD, ALL CRAFTED TO IMPRESS.

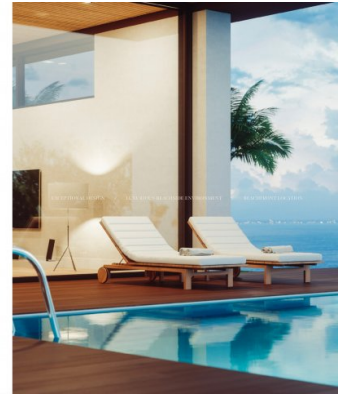
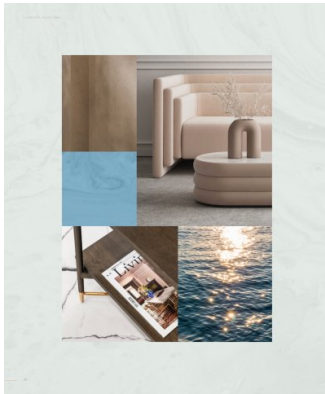
EXCEPTIONAL DESIGN AND PERFECT FINISH. EXCLUSIVITY OF A PRIVATE NEIGHBOURHOOD.

A residence thoughtfully designed and crafted to provide a truly unique experience. A residence that offers the finest quality of materials and finishes, and the finest craftsmanship. A residence that is a true masterpiece.

EXCEPTIONAL DESIGN, A BREATHTAKING BEACHFRONT LOCATION, AND THE EXCLUSIVITY OF A PRIVATE NEIGHBOURHOOD, ALL CRAFTED TO IMPRESS.

EXCEPTIONAL DESIGN AND PERFECT FINISH. EXCLUSIVITY OF A PRIVATE NEIGHBOURHOOD.

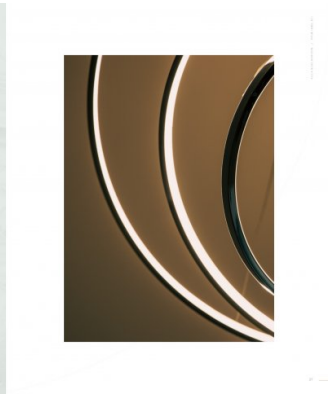
A residence thoughtfully designed and crafted to provide a truly unique experience. A residence that offers the finest quality of materials and finishes, and the finest craftsmanship. A residence that is a true masterpiece.

EXCEPTIONAL DESIGN, A BREATHTAKING BEACHFRONT LOCATION, AND THE EXCLUSIVITY OF A PRIVATE NEIGHBOURHOOD, ALL CRAFTED TO IMPRESS.

EXCEPTIONAL DESIGN AND PERFECT FINISH. EXCLUSIVITY OF A PRIVATE NEIGHBOURHOOD.

A residence thoughtfully designed and crafted to provide a truly unique experience. A residence that offers the finest quality of materials and finishes, and the finest craftsmanship. A residence that is a true masterpiece.



EXCEPTIONAL DESIGN, A BREATHTAKING BEACHFRONT LOCATION, AND THE EXCLUSIVITY OF A PRIVATE NEIGHBOURHOOD, ALL CRAFTED TO IMPRESS.

EXCEPTIONAL DESIGN AND PERFECT FINISH. EXCLUSIVITY OF A PRIVATE NEIGHBOURHOOD.

A residence thoughtfully designed and crafted to provide a truly unique experience. A residence that offers the finest quality of materials and finishes, and the finest craftsmanship. A residence that is a true masterpiece.

OWN A PIECE OF HISTORY

LIVE IN A MASTERPIECE

THE LINGER BACH VILLA

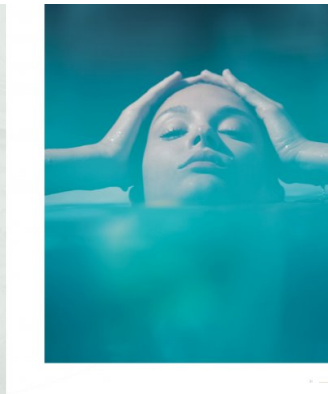
EXCEPTIONAL DESIGN AND PERFECT FINISH. EXCLUSIVITY OF A PRIVATE NEIGHBOURHOOD.

A residence thoughtfully designed and crafted to provide a truly unique experience. A residence that offers the finest quality of materials and finishes, and the finest craftsmanship. A residence that is a true masterpiece.

WELCOMING WATERFRONT RESIDENCES

EXCEPTIONAL DESIGN AND PERFECT FINISH. EXCLUSIVITY OF A PRIVATE NEIGHBOURHOOD.

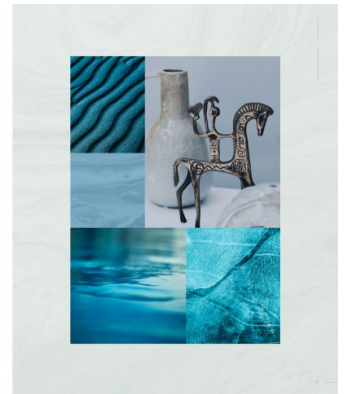
A residence thoughtfully designed and crafted to provide a truly unique experience. A residence that offers the finest quality of materials and finishes, and the finest craftsmanship. A residence that is a true masterpiece.



Located on the exclusive fronts, each residence offers direct access to the beach, nestled within a private neighbourhood that inspires serenity.

EXCEPTIONAL DESIGN AND PERFECT FINISH. EXCLUSIVITY OF A PRIVATE NEIGHBOURHOOD.

A residence thoughtfully designed and crafted to provide a truly unique experience. A residence that offers the finest quality of materials and finishes, and the finest craftsmanship. A residence that is a true masterpiece.



EXCEPTIONAL DESIGN, A BREATHTAKING BEACHFRONT LOCATION, AND THE EXCLUSIVITY OF A PRIVATE NEIGHBOURHOOD, ALL CRAFTED TO IMPRESS.

EXCEPTIONAL DESIGN AND PERFECT FINISH. EXCLUSIVITY OF A PRIVATE NEIGHBOURHOOD.

A residence thoughtfully designed and crafted to provide a truly unique experience. A residence that offers the finest quality of materials and finishes, and the finest craftsmanship. A residence that is a true masterpiece.



VILLA BLUE HORIZON

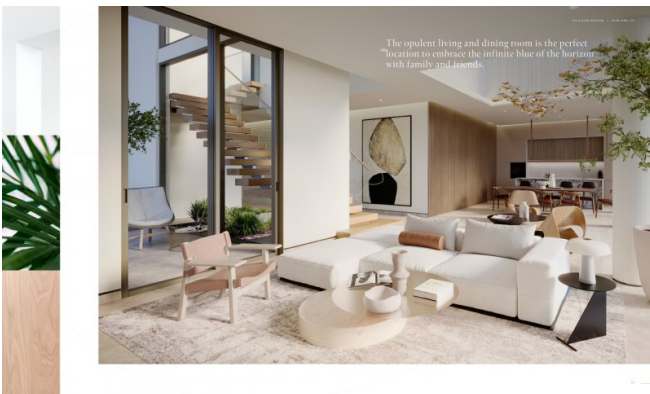
EXCEPTIONAL DESIGN AND PERFECT FINISH. EXCLUSIVITY OF A PRIVATE NEIGHBOURHOOD.

A residence thoughtfully designed and crafted to provide a truly unique experience. A residence that offers the finest quality of materials and finishes, and the finest craftsmanship. A residence that is a true masterpiece.

A BRIGHT BEACHFRONT HAVEN

EXCEPTIONAL DESIGN AND PERFECT FINISH. EXCLUSIVITY OF A PRIVATE NEIGHBOURHOOD.

A residence thoughtfully designed and crafted to provide a truly unique experience. A residence that offers the finest quality of materials and finishes, and the finest craftsmanship. A residence that is a true masterpiece.





Each space has been designed to enhance your daily life. Delicate details and fine finishes complete this magnificent home.

4. SENSITIVE ENVIRONMENT

Placed within the beautiful Alpine valley of Zirl, the house makes the most of its location by offering a panoramic view of the surrounding mountains and the valley below.



Every morning starts with your wellbeing rituals right here in this nature-inspired sanctuary, where natural materials are harnessed to be in perfect harmony with the environment outside.



BEACH HILLS COLLECTION

VILLA

BLUE HORIZON

0-1

3 BEDROOMS + FAMILY ROOM
POOL TERRACE AND TERRACE

PROPERTY	PRICE (CHF)
Blue Horizon	798,000
Blue Horizon 02	718,000
Blue Horizon 03	825,000
Blue Horizon 04	825,000
Blue Horizon 05	825,000
Blue Horizon 06	825,000
Blue Horizon 07	825,000
Blue Horizon 08	825,000
Blue Horizon 09	825,000
Blue Horizon 10	825,000
Blue Horizon 11	825,000
Blue Horizon 12	825,000
Blue Horizon 13	825,000
Blue Horizon 14	825,000
Blue Horizon 15	825,000
Blue Horizon 16	825,000
Blue Horizon 17	825,000
Blue Horizon 18	825,000
Blue Horizon 19	825,000
Blue Horizon 20	825,000
Blue Horizon 21	825,000
Blue Horizon 22	825,000
Blue Horizon 23	825,000
Blue Horizon 24	825,000
Blue Horizon 25	825,000
Blue Horizon 26	825,000
Blue Horizon 27	825,000
Blue Horizon 28	825,000
Blue Horizon 29	825,000
Blue Horizon 30	825,000

