

REEF

LUXURY DEVELOPMENTS





## ABOUT US

At REEF, we redefine luxury living in Dubai by blending innovation with practical solutions. Our commitment to excellence ensures high-quality, elegant homes that integrate thoughtful practices and timeless design. We create vibrant, connected communities that offer exceptional value.





## Innovative Climate-Controlled Sunken Balcony

We take pride in introducing our trademark climate-controlled sunken balcony concept, an exclusive feature that sets us apart in the real estate market. As the sole patent holder, we are pioneering this innovative design to set new industry benchmarks.



# AL FURJAN

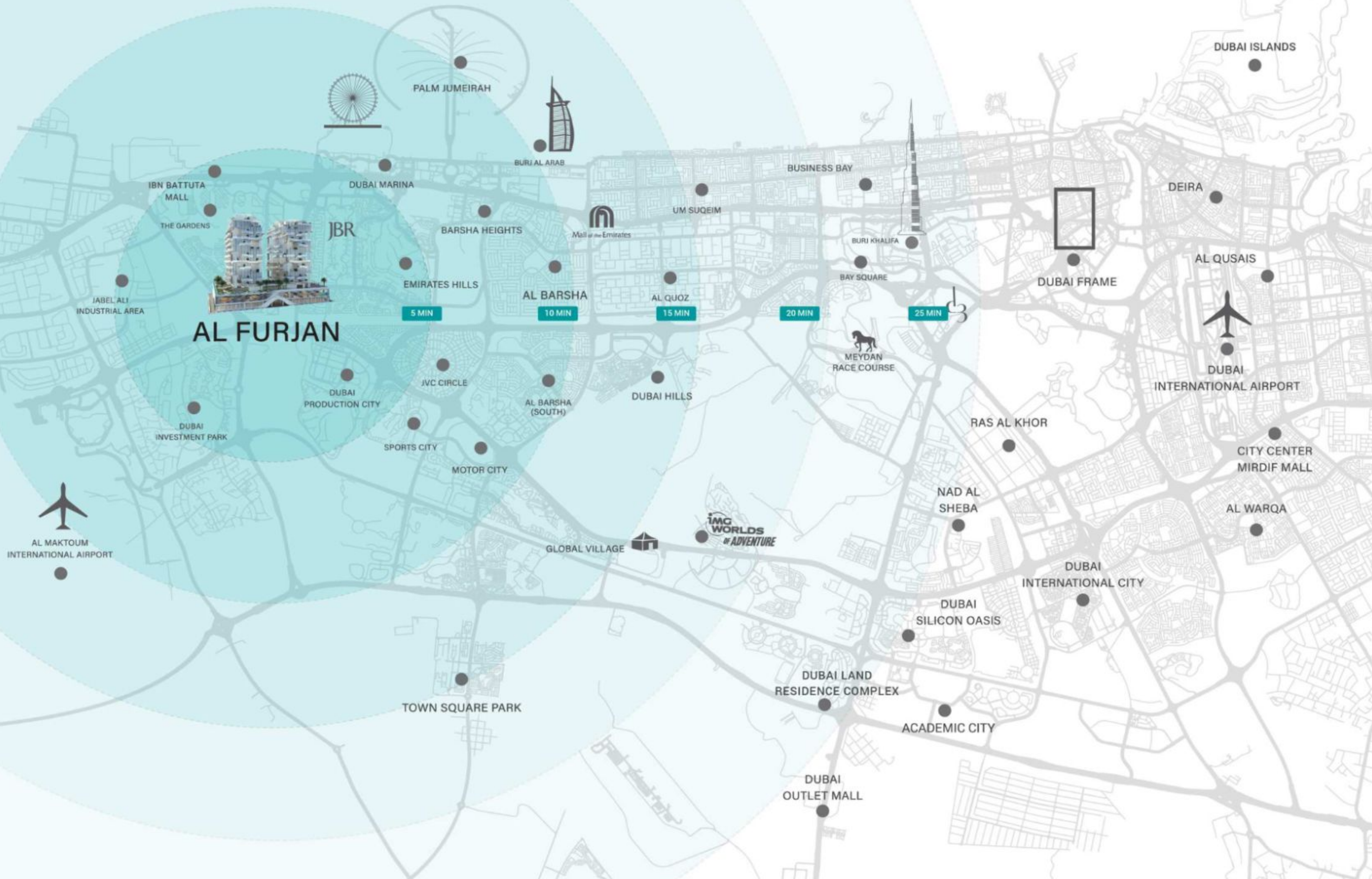
Al Furjan is emerging as one of Dubai's most sought-after family communities and a top choice for both families and investors. Here are some key factors contributing to its growing appeal:

- **Promising Investment Opportunities:** A thriving real estate market with strong growth, offering you high returns and long-term investment security.
- **Family-Oriented:** A secure, family-friendly environment with parks, schools, and healthcare facilities.
- **Convenient Transport:** Direct access to major highways and Al Furjan Metro Station.
- **Wide Range of Amenities:** Community centers, pools, gyms, cycling tracks, and retail options.
- **Proximity to Key Areas:** Close to Jebel Ali Village, Discovery Gardens, and Ibn Battuta Mall.
- **Educational & Healthcare Facilities:** Nearby schools like The Arbor School and healthcare centers such as Medicentres.
- **Sustainable Living:** Green spaces, eco-friendly designs, and a 40 km cycling track network.
- **Global Connectivity:** A short drive to Al Maktoum International Airport, ensuring seamless access to global travel connections.



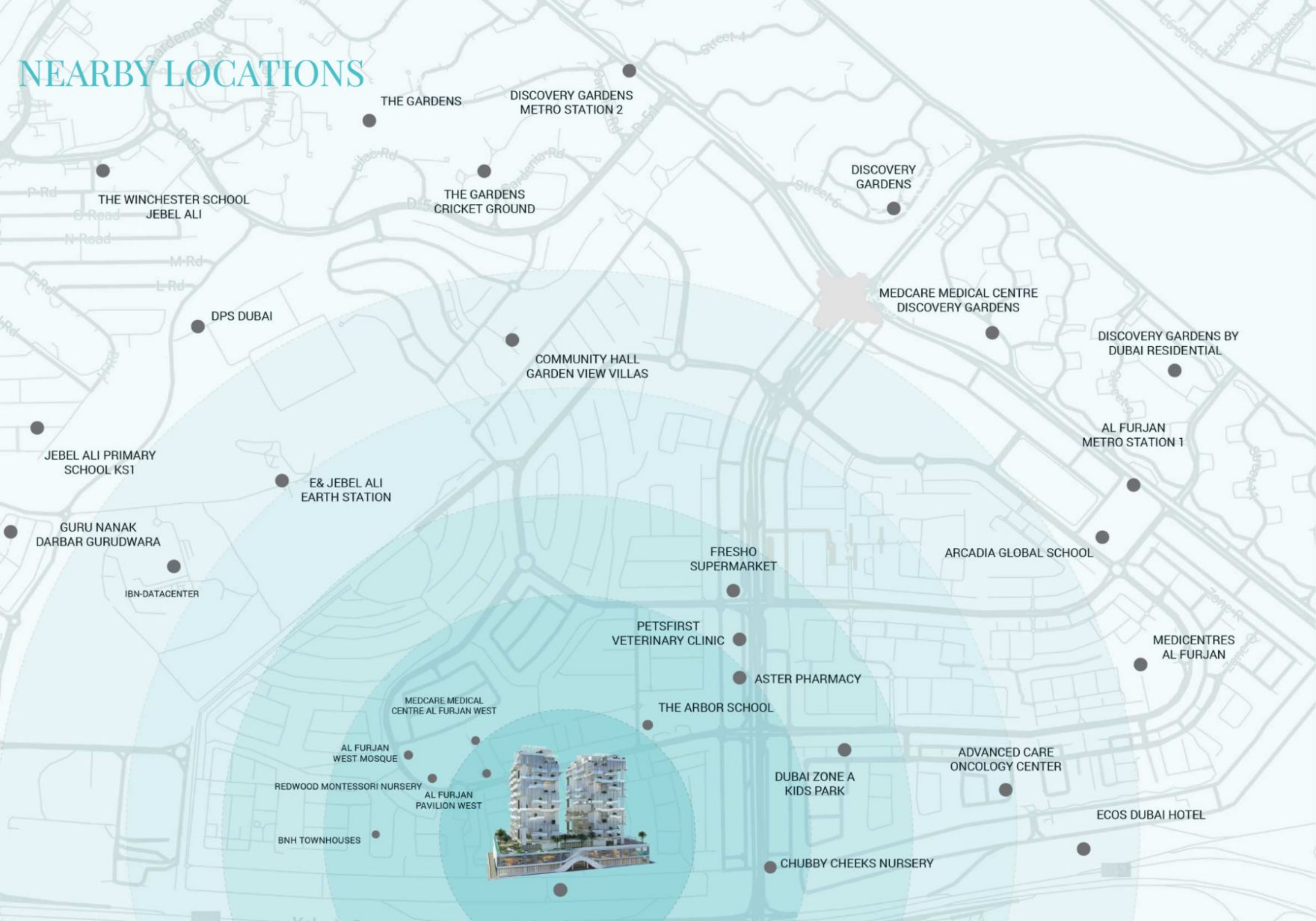


# REEF 999





# NEARBY LOCATIONS



THE GARDENS

DISCOVERY GARDENS METRO STATION 2

THE WINCHESTER SCHOOL JEBEL ALI

THE GARDENS CRICKET GROUND

DISCOVERY GARDENS

DPS DUBAI

MEDCARE MEDICAL CENTRE DISCOVERY GARDENS

COMMUNITY HALL GARDEN VIEW VILLAS

DISCOVERY GARDENS BY DUBAI RESIDENTIAL

JEBEL ALI PRIMARY SCHOOL KS1

E& JEBEL ALI EARTH STATION

AL FURJAN METRO STATION 1

GURU NANAK DARBAR GURUDWARA

IBN-DATACENTER

FRESHO SUPERMARKET

ARCADIA GLOBAL SCHOOL

PETSFIRST VETERINARY CLINIC

MEDICENTRES AL FURJAN

ASTER PHARMACY

MEDCARE MEDICAL CENTRE AL FURJAN WEST

THE ARBOR SCHOOL

AL FURJAN WEST MOSQUE

DUBAI ZONE A KIDS PARK

ADVANCED CARE ONCOLOGY CENTER

REDWOOD MONTESSORI NURSERY

AL FURJAN PAVILION WEST

ECOS DUBAI HOTEL

BNH TOWNHOUSES



CHUBBY CHEEKS NURSERY



Inspire  
Standard of Living





# NEARBY LANDMARKS



PALM JUMEIRAH

20 mins



IBN BATTUTA MALL

10 mins



DUBAI MARINA

10 mins



AL MAKTOUM INTERNATIONAL AIRPORT

15 mins



BURJ KHALIFA

25 mins



MALL OF EMIRATES

15 mins



DUBAI EXPO CITY

10 mins



METRO CONNECTIVITY

5 mins







# BUILDING CONFIGURATION

G+1P+12

TOTAL UNITS

142

ONE BEDROOM

108

TWO BEDROOM

20

THREE BEDROOM

4

FOUR BEDROOM VILLA

10





**REEF**  
RESIDENTIAL DEVELOPMENT





REEF

RESIDENCES AT AL QADSIYA



## NARRATIVE



## MINIMALIST STILL LIFE

The interior design concept, inspired by the beauty and intricate structure of coral reefs, seamlessly blends organic elements with contemporary design. This fusion creates a serene and inspiring space, fostering tranquility and creativity. The design celebrates nature's delicate wonders, offering a space that encourages a deep appreciation for our environment through thoughtful and engaging elements.





# INTERIORS



## LOBBY AREA

The expansive, light-filled lobby sets the stage for a life of elegance, where timeless design and refined craftsmanship come together in perfect harmony.







Lobby Area



# CORRIDOR

Designed to inspire, every detail reflects the perfect balance of style and comfort.





2  
1  
3

1

Corridor



# PODIUM PARADISE

Where Leisure Meets Elegance





# AMENITIES



SWIMMING POOL



JACUZZI



KIDS POOL



SUNKEN SEATS



BAJA SHELF



DECKING AREA



VEGETABLE GARDEN



PICKLE BALL



SHADED SITTING AREA



ELECTRIC VEHICLE RECHARGE STATION



KIDS PLAY AREA



STATE OF THE ART GYM



BADMINTON AND VOLLEYBALL COURT



360 JOGGING TRACK



SITTING AREA



OPEN CINEMA



PRIVATE WINTER GARDEN



2X CRICKET PITCH



CO-WORKING SPACE



TENNIS AND PADDLE COURT



BASKETBALL COURT



BBQ AREA



YOGA AREA



PRIVATE GYM



## STATE-OF-THE ART GYM

A fully equipped, state-of-the-art gym designed for optimal performance, offering an exceptional workout experience in a modern and convenient environment.





GYM MODE

ON 





Techno Gym





GYM MODE

Pilates Area





Co-working Space





Co-working Space





Co-working Space





Co-working Space



## SWIMMING POOL

A relaxing oasis, our expansive pool area blends luxury and relaxation with a serene beach pool, kids pool, infinity pool, Jacuzzi, Baja shelves, stylish deck, sun beds, and unique sunken seating for ultimate comfort and enjoyment.







Swimming Pool





Swimming Pool





Kids Pool





BBQ Area





BBQ Area





Shaded Sitting Area





Shaded Sitting Area





Open Cinema





Vegetable Garden





Kids Playing Area





Yoga Area





Cricket Pitch





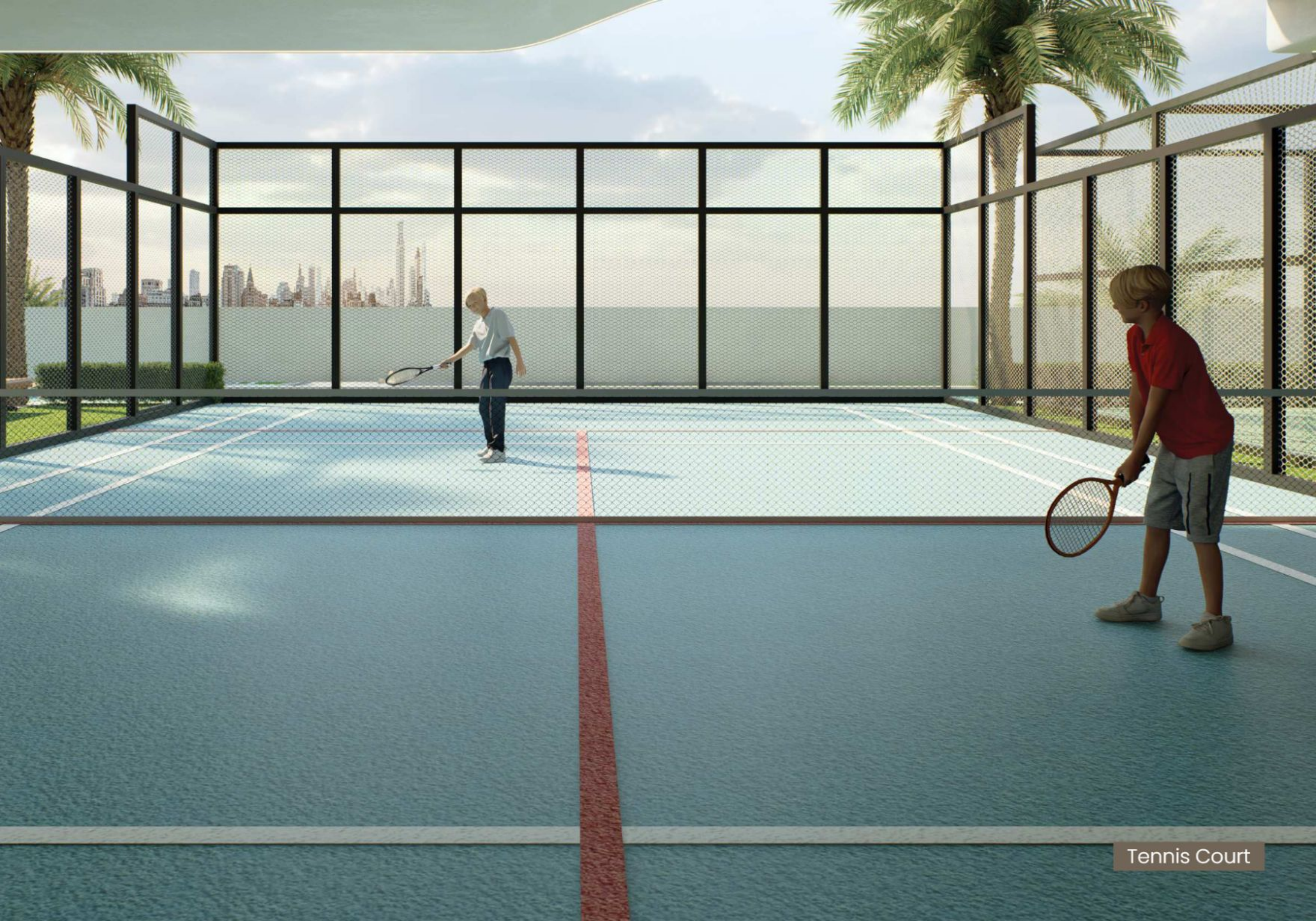
Basketball Court





Badminton Court





Tennis Court



# ONE BEDROOM APARTMENTS

## UNITS SIZE

APARTMENTS	UNITS	AREA SQ.FT	
		min	max
1 Bedroom	108	792	916.8





Living Area





Dinning Area





Kitchen





Master Bedroom





Climate-Controlled Sunken Balcony



# TWO BEDROOM APARTMENTS

## UNITS SIZE

APARTMENTS	UNITS	AREA SQ.FT	
		min	max
2 Bedroom	20	1338.3	1875.5





Living Area





Living Area





Kitchen





Kitchen





Master Bedroom





Bedroom





Climate-Controlled Sunken Balcony



# THREE BEDROOM APARTMENTS

## UNITS SIZE

APARTMENTS	UNITS	AREA SQ.FT	
		min	max
3 Bedroom	4	2022.2	2636





Living Area





Closed Kitchen





Master Bedroom





Bedroom





Bedroom



## CLIMATE-CONTROLLED SUNKEN BALCONY

The unique, one-of-a-kind climate-controlled sunken balcony—an exclusive feature designed to maximize comfort and usability, offering a year-round space for relaxation.







Climate-Controlled Sunken Balcony



# FOUR BEDROOM VILLA

## UNITS SIZE

APARTMENTS	UNITS	AREA SQ.FT	
		min	max
4 Bedroom Villa	10	3424	3695





Living Area





Living Area





Living Area





Kitchen





Kitchen





Dinning Area





Pantry Area





Master Bedroom





Bedroom





Bedroom





Bedroom





Bedroom





Maid Room



## REEF WINTER GARDEN WHERE WINTER LIVES ALL YEAR LONG

REEF Winter Garden is a place where you will enter and have the winter season regardless of what season we are in! It is a special climate-controlled space where you can experience the beauty of winter no matter what time of year it is. This unique garden ensures a comfortable environment all year round, offering you an exceptional outdoor experience. Designed for relaxation and quality time, the REEF Winter Garden features a cozy seating area and a dedicated barbecue space, creating the perfect setting for gatherings with family and friends. Whether it's a sunny summer day or a cooler evening, you can always enjoy your Winter garden in complete comfort.







Winter Garden





Winter Garden





Winter Garden





Winter Garden





Winter Garden



# REEF

LUXURY DEVELOPMENTS

☎ 80037333 | ✉ [info@reefdevelopments.ae](mailto:info@reefdevelopments.ae) | 🌐 [www.reefdevelopments.ae](http://www.reefdevelopments.ae)

📍 Office - 906 Park Heights Square 1, Dubai Hills, Dubai | REEF Villa 522, Jumeirah Third, Dubai, UAE