

## Dubai, Design District – Exclusive Waterfront Residences for Sale



### Prices & Costs

Purchase Price	Price on request
Free places	1
underground parking garages	3

### Details of the property

Living space	173,77 m <sup>2</sup>
Total area	197,38 m <sup>2</sup>
Bedrooms	2
Bathrooms	3
Size of balcony/terrace	23,61 m <sup>2</sup>
Balconies	2
Condition of the property	First time use
old/new building	New building
Sale status	open

### Features

General categorization	Luxurious
Bathroom	Shower
Kitchen	Fitted kitchen, Open

Kind of heating	Central
Air-conditioned	Yes
Elevator	Persons
furnished	fully
Cable / Satellite TV	Yes
Storage	Yes
senior-friendly	Yes

## Property description

Atélis at d3 is designed by the renowned architects Skidmore, Owings & Merrill (SOM), creators of the Burj Khalifa. This residential masterpiece reflects the elegant strength of a desert flower, with curving balconies resembling delicate petals. The residences offer expansive living spaces with high-end finishes and elegant design. Each apartment is meticulously crafted to offer an elevated living experience with serene interiors that include warm natural tones and luxurious details. Residents will enjoy access to state-of-the-art amenities, including wellness spaces, gardens, and an infinity pool overlooking the iconic Dubai skyline.

Atélis at d3 is more than just a residence; it is a lifestyle. The community is designed to nurture creativity and well-being. With a focus on walkability, social interaction, and connection to nature, the district is ideal for those seeking both tranquility and inspiration. Its strategic location near major business hubs and leisure attractions makes it a perfect choice for those looking to experience the best of both work and play. Whether it's enjoying the stunning views or taking a leisurely stroll through the district, Atélis offers a lifestyle unlike any other in Dubai.

## Location

Dubai Design District (d3) is a dynamic lifestyle destination designed to foster creativity and innovation. Strategically located near iconic landmarks such as Burj Khalifa, Downtown Dubai, and The Dubai Mall, d3 is a prominent cultural hub where art, design, and fashion intersect. This area also offers exceptional connectivity, including proximity to the Ras Al Khor Wildlife Sanctuary and the Dubai Creek.

Whether you're looking to live in a community rich with cultural events or simply want easy access to the heart of Dubai, d3 offers an unmatched location that brings together urban sophistication and serene natural surroundings.

## Features

These exclusive residences offer world-class amenities, including direct access to the waterfront and cascading swimming pools. The luxurious facilities include sunken seating areas, cabanas, social lounges for gatherings, and a fully-equipped gym. A dedicated children's pool and play area, along with an indoor kids' club and learning area, ensure a family-friendly atmosphere. The property also features an outdoor co-working space and entertainment room. In addition to these, the upper levels include an infinity pool with panoramic views of the city, offering residents a serene place to relax and unwind.

## Others

Disclaimer: plans, details and unit orientation included are indicative only and are

subject to change by the developer/seller at its sole discretion without notice and/or liability. All images, including features, finishes, furnishings, view and scale are illustrative only. Final areas, orientation, dimensions, layout and materials may differ from those stated.

## Address

d3 dubai design district 1

## Vendor

TANAMI PROPERTIES  
Al Marsa Street  
3405 Marina Plaza

Telephone main office

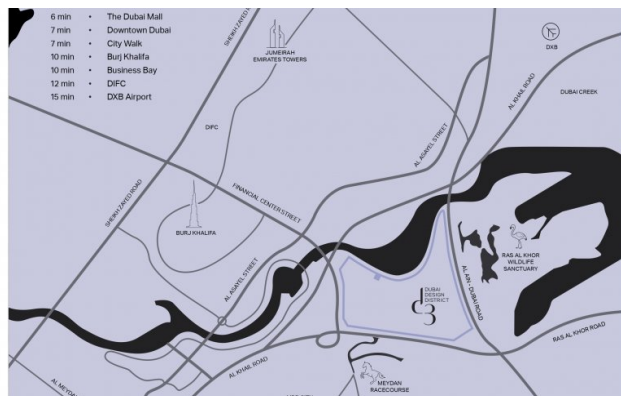
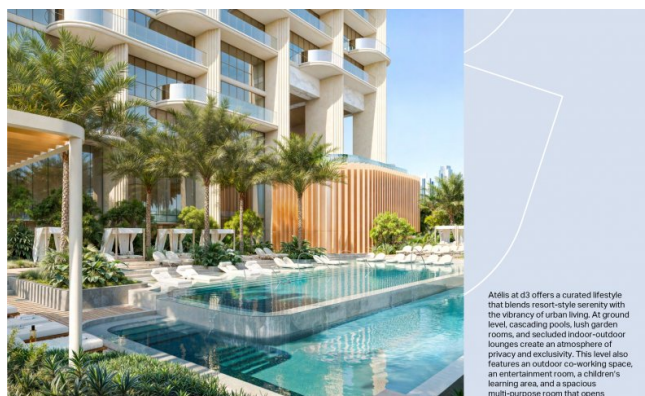
+971 4 248 3400

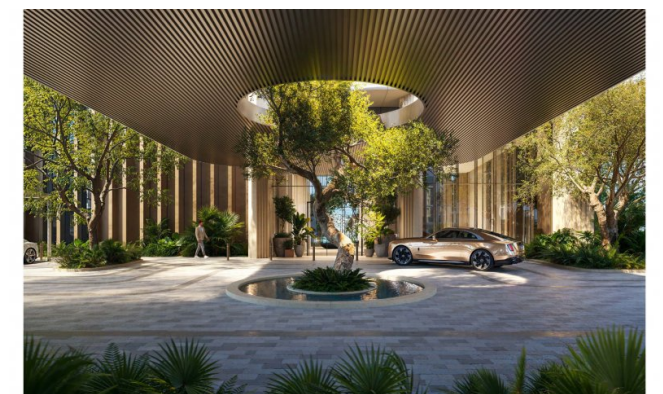
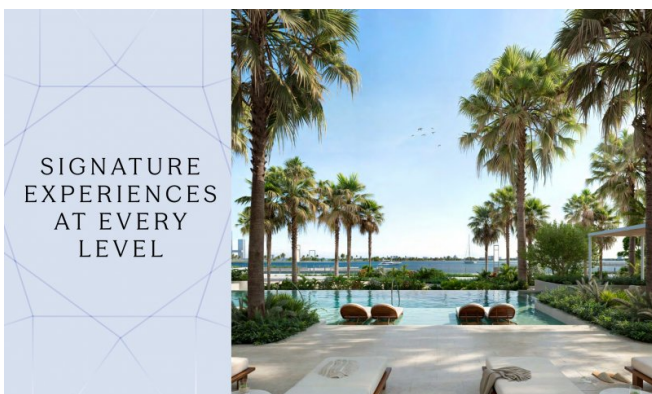
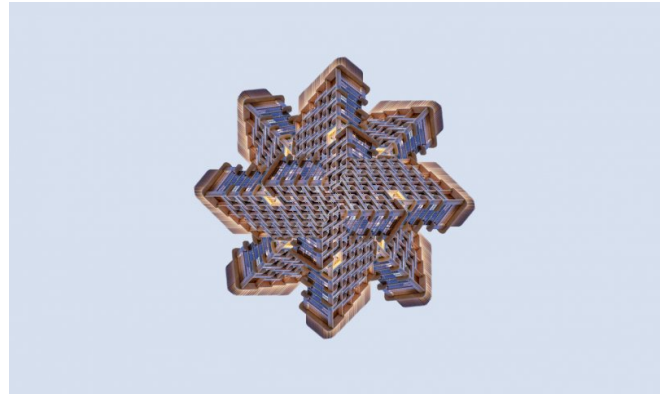
E-Mail

[office@ihr-makler.cc](mailto:office@ihr-makler.cc)

Website

[victoriacrigan@tanamiproperties.ae](mailto:victoriacrigan@tanamiproperties.ae)







The first level includes a well-appointed gym overlooking the gardens. Layered outdoor spaces throughout the building immerse residents in nature while echoing the creative pulse of d3. From shimmering water features and shaded walkways to calming green zones, every detail is designed to foster well-being, leisure, and a seamless connection between architecture, landscape, and



Higher up, an infinity pool and tranquil garden spaces offer residents a place for reflection and restoration, promoting both mental and physical well-being. With panoramic views of the Dubai skyline, the elevated wellness level invites residents to unwind in



**KEY FEATURES**



- Grand statement arrival framed by nature
- Direct access to the waterfront
- Cascading swimming pool
- Infinity pool with skyline views
- Park-like walkable paths
- Dedicated kids' pool
- Sunken seating and cabanas
- Social lounges for gatherings
- Entertainment room
- Fully air-treated rooms
- Garden spaces and meditative zones
- Outdoor co-working areas
- Indoor kids' club and learning area
- Outdoor kids' play area
- Multi-purpose room



