

Dubai, Design District – Exclusive Waterfront Residences for Sale

THE EDGE

and purposeful innovation come together. With uninterrupted views of the water, Atélis at d3 offers a serene contrast to the energy of the city, bringing residents closer to nature while staying connected to creativity and culture.



Prices & Costs

Purchase Price	Price on request
Free places	1
underground parking garages	3

Details of the property

Living space	246,74 m ²
Total area	305,87 m ²
Bedrooms	4
Bathrooms	4
Size of balcony/terrace	59,13 m ²
Balconies	5
Condition of the property	First time use
old/new building	New building
Sale status	open

Features

General categorization	Luxurious
Bathroom	Shower
Kitchen	Fitted kitchen, Open

Kind of heating	Central
Air-conditioned	Yes
Elevator	Persons
furnished	fully
Cable / Satellite TV	Yes
Storage	Yes
senior-friendly	Yes

Property description

Atélis at d3 is designed by the renowned architects Skidmore, Owings & Merrill (SOM), creators of the Burj Khalifa. This residential masterpiece reflects the elegant strength of a desert flower, with curving balconies resembling delicate petals. The residences offer expansive living spaces with high-end finishes and elegant design. Each apartment is meticulously crafted to offer an elevated living experience with serene interiors that include warm natural tones and luxurious details. Residents will enjoy access to state-of-the-art amenities, including wellness spaces, gardens, and an infinity pool overlooking the iconic Dubai skyline.

Atélis at d3 is more than just a residence; it is a lifestyle. The community is designed to nurture creativity and well-being. With a focus on walkability, social interaction, and connection to nature, the district is ideal for those seeking both tranquility and inspiration. Its strategic location near major business hubs and leisure attractions makes it a perfect choice for those looking to experience the best of both work and play. Whether it's enjoying the stunning views or taking a leisurely stroll through the district, Atélis offers a lifestyle unlike any other in Dubai.

Location

Dubai Design District (d3) is a dynamic lifestyle destination designed to foster creativity and innovation. Strategically located near iconic landmarks such as Burj Khalifa, Downtown Dubai, and The Dubai Mall, d3 is a prominent cultural hub where art, design, and fashion intersect. This area also offers exceptional connectivity, including proximity to the Ras Al Khor Wildlife Sanctuary and the Dubai Creek. Whether you're looking to live in a community rich with cultural events or simply want easy access to the heart of Dubai, d3 offers an unmatched location that brings together urban sophistication and serene natural surroundings.

Features

These exclusive residences offer world-class amenities, including direct access to the waterfront and cascading swimming pools. The luxurious facilities include sunken seating areas, cabanas, social lounges for gatherings, and a fully-equipped gym. A dedicated children's pool and play area, along with an indoor kids' club and learning area, ensure a family-friendly atmosphere. The property also features an outdoor co-working space and entertainment room. In addition to these, the upper levels include an infinity pool with panoramic views of the city, offering residents a serene place to relax and unwind.

Others

Disclaimer: plans, details and unit orientation included are indicative only and are

subject to change by the developer/seller at its sole discretion without notice and/or liability. All images, including features, finishes, furnishings, view and scale are illustrative only. Final areas, orientation, dimensions, layout and materials may differ from those stated.

Address

d3 dubai design district 1

Vendor

TANAMI PROPERTIES
Al Marsa Street
3405 Marina Plaza

Telephone main office

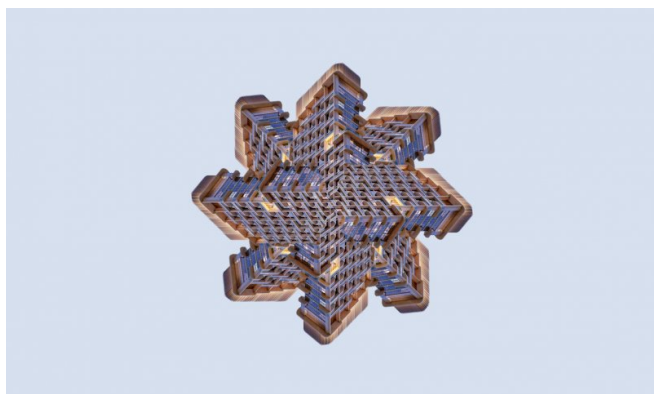
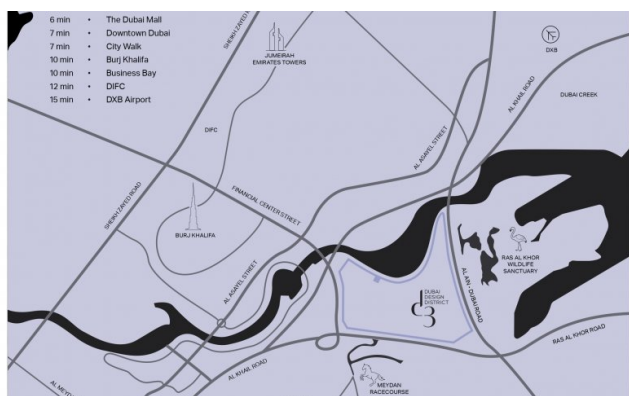
+971 4 248 3400

E-Mail

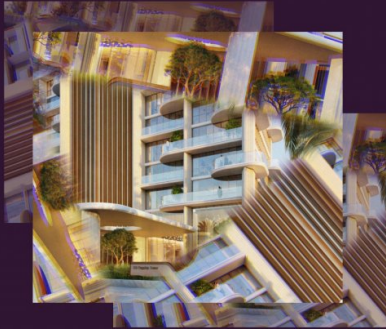
office@ihr-makler.cc

Website

victoriacrigan@tanamiproperties.ae



ROOTED IN IMAGINATION



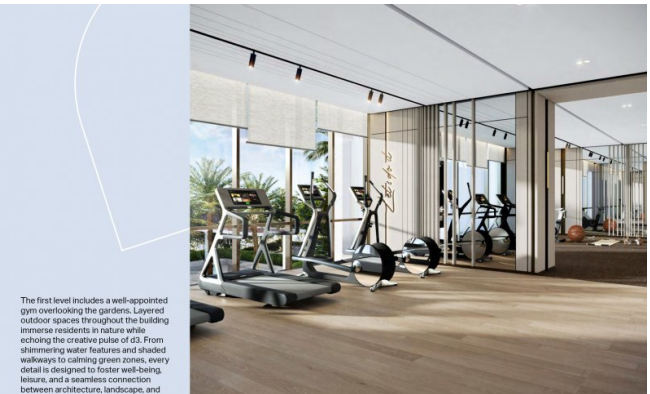
Designed by the visionary studio Skidmore, Owings & Merrill (SOM), the architects behind the iconic Burj Khalifa, Atlas at D3 draws inspiration from the elegance and resilience of a desert flower. Its architecture mirrors the delicate strength of this Emirati bloom, with curving balconies layered like petals, giving the façade a fluid, organic form.

SOM: THE ARCHITECTS OF TOMORROW'S ICONS



As global pioneers in architecture, engineering, and planning, SOM is renowned for shaping cities through sustainable innovation and bold, boundary-pushing design. www.som.com

SIGNATURE EXPERIENCES AT EVERY LEVEL



The first level includes a well-appointed gym overlooking the gardens. Layered outdoor spaces throughout the building immerse residents in nature while echoing the creative pulse of D3. From shimmering water features and shaded walkways to calming green zones, every detail is designed to foster well-being, leisure, and a seamless connection between architecture, landscape, and



Higher up, an infinity pool and tranquil garden spaces offer residents a place for reflection and restoration, promoting both mental and physical well-being. With panoramic views of the Dubai skyline, the elevated wellness level invites residents to unwind in



KEY FEATURES



- Grand statement arrival framed by nature
- Direct access to the waterfront
- Cascading swimming pool
- Infinity pool with skyline views
- Fully landscaped garden
- Dedicated kids' pool
- Sunken seating and cabanas
- Social lounges for gatherings
- Entertainment room
- Fully serviced gym
- Garden spaces and meditative zones
- Outdoor co-working areas
- Indoor kids' club and learning area
- Outdoor kids' play area
- Multi-tenure homes



The interiors offer a refined experience of serene living, inspired by the delicate petals of a desert flower. Graceful, sweeping curves flow effortlessly through each space, softened by a warm, natural palette and accented with slender bronze details that add a quiet sense of glamour.

This design approach transforms everyday living into an elevated experience, crafted for those who seek beauty, subtlety, and splendour woven seamlessly into their surroundings.

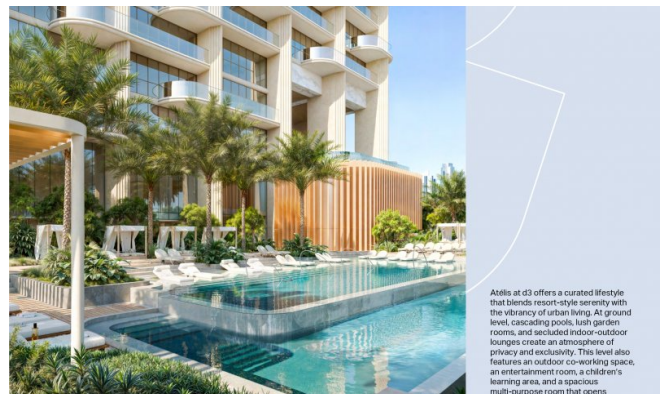


RESIDENCES FRAMED BY VIEWS

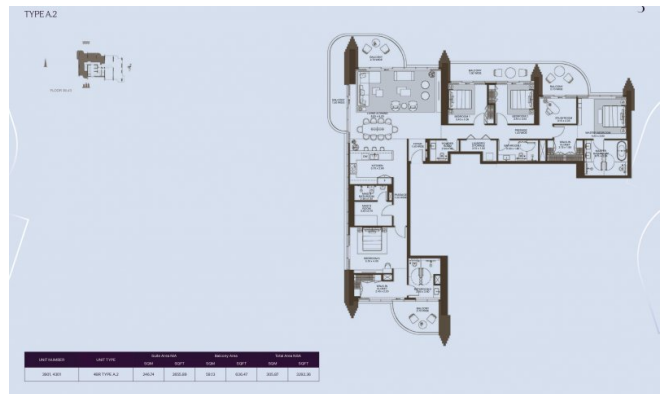
Each one- to four-bedroom residence is a benchmark in contemporary elegance and comfort. Flowing, open-plan interiors are complemented by exquisitely finished kitchens and expansive bathrooms, designed to elevate daily living.

Generously sized bedrooms offer a perfect blend of comfort and sophistication, with ample space for built-in closets that enhance both convenience and style. Private balconies frame sweeping panoramic views of the Dubai skyline, creating a connection between indoor serenity and the world beyond.





Atelis at d3 offers a curated lifestyle that blends resort-style serenity with the vibrancy of urban living. At ground level, cascading pools, lush garden rooms, and secluded indoor-outdoor lounges create an atmosphere of privacy and exclusivity. This level also features an outdoor co-working space, an entertainment room, a children's learning area, and a spacious multi-purpose room that opens



TYPE A2	TYPE A1	TYPE A3	TYPE A4	TYPE A5	TYPE A6	TYPE A7	TYPE A8
200.000	180.000	220.000	250.000	280.000	300.000	320.000	350.000