

Dubai, Zabeel 2 – Precision Wellness Residences for Sale



Prices & Costs

Purchase Price	Price on request
----------------	------------------

Details of the property

Living space	236,85 m ²
Total area	290,43 m ²
Rooms	6
Bedrooms	3
Bathrooms	6
Size of balkony/terrace	53,58 m ²
Balconies	1
old/new building	New building

Features

General categorization	Luxurious
Bathroom	Shower
Kitchen	Open
Elevator	Persons
furbished	fully
Cable / Satellite TV	Yes

Storage	Yes
senior-friendly	Yes

Property description

Positioned at the intersection of advanced wellness and ultra-modern architecture, this luxurious residential development in Zabeel 2, Dubai, introduces the concept of Precision Wellness—a scientifically guided lifestyle experience designed to optimize physical and mental health.

Crafted by world-renowned architects and developers, each residence blends sensory-responsive materials, biophilic design, and AI-integrated smart systems. Interiors feature soundproofing, circadian lighting, vitamin-infused showers, EMF-conscious materials, and purified air and water systems. Floor-to-ceiling windows and expansive balconies offer tranquil city views, enhancing natural light and mindfulness.

Residents benefit from access to the Akala Spa and the Everwell medical wellness clinic, which provides groundbreaking treatments including stem cell therapy, peptide injections, IV infusions, ozone therapy, and hormonal balancing. Every service—from diagnostics to advanced regeneration—is delivered in a seamless, private clinical environment.

This community also features Formative, a high-performance fitness club with the UAE's most advanced gym technology, a wellness concierge, private movie theatre, organic restaurants, and customized nutrition programs based on genetic profiles. Whether unwinding in a floatation pod or participating in reiki, pilates, or sound therapy, this is a space built for intentional living.

Perfect for high-performing individuals, wellness seekers, or investors focused on next-gen luxury, this is more than a home—it's a sanctuary to live, heal, and thrive.

Location

Located in Zabeel 2, one of Dubai's most elite neighborhoods, these residences place you minutes from Downtown Dubai and DIFC. Nestled between the city's business core and cultural epicenters, residents enjoy unrivaled proximity to luxury dining, shopping, and healthcare. The twin towers are surrounded by scenic views, elite hotels, and serene landscapes. Whether you seek wellness retreats, fine-dining hotspots, or fast access to business hubs, Zabeel 2 offers an ideal blend of serenity and connectivity—just a short drive from the Dubai International Airport.

Features

This development redefines holistic living with a full-spectrum wellness ecosystem: thermal circuits, spa therapies, fitness studios, sensory deprivation rooms, infrared saunas, cryotherapy, red light therapy, and hyperbaric oxygen chambers. Residents enjoy personalized in-home wellness sessions, an elite medical clinic offering regenerative treatments, and AI-driven biometric planning. On-site restaurants serve nutrient-rich menus, while smart home tech ensures seamless comfort. Facilities also include a private cinema, rooftop pool, yoga suites, and curated social lounges. Security, valet, concierge, and in-residence services complete the all-inclusive lifestyle.

Others

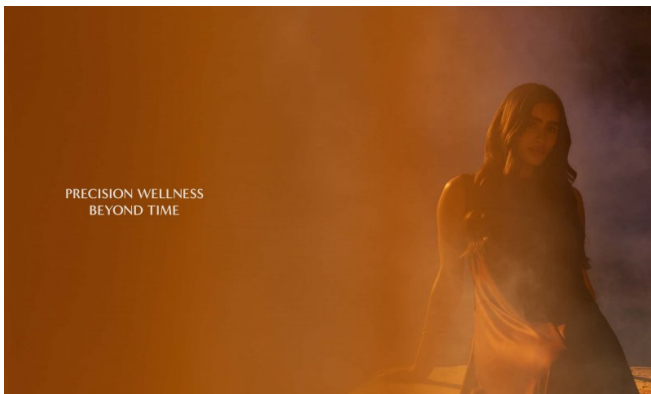
Disclaimer: plans, details and unit orientation included are indicative only and are subject to change by the developer/seller at its sole discretion without notice

and/or liability. All images, including features, finishes, furnishings, view and scale are illustrative only. Final areas, orientation, dimensions, layout and materials may differ from those stated.

Vendor

TANAMI PROPERTIES
Al Marsa Street
3405 Marina Plaza

Telephone main office +971 4 248 3400
E-Mail office@ihr-makler.cc
Website victoriacrigan@tanamiproperties.ae









**THE HOME EXPERIENCE
AMPLIFIED BY
SCIENCE AND SOUL**

Marking the first development to introduce precision wellness to the area of luxury homes, these residences offer their owners an elegantly crafted and purposeful and well-considered new benchmark for residential life.

Building our residency with precision detailing, natural stone, stainless steel and high-end finishes, each home promises a level of refinement.

Brought to you by Anika, these residences are constructed with the utmost care and attention to detail. From the finest materials and finishes to the most advanced technology, every element is chosen for its quality, durability, and ability to enhance the overall quality of the living experience.



**LIVE IN THE CENTER,
STAY CENTERED**

The heart district of Dubai International Financial Centre (DIFC) and Downtown Dubai, the city's global financial hub, has a rich history of innovation and leadership. It is a dynamic and vibrant area, offering a unique blend of business, culture, and lifestyle.

The location of these residences is a strategic advantage, offering unparalleled access to the city's most prestigious landmarks, including the Burj Khalifa, the Dubai Mall, and the Dubai Opera House.

