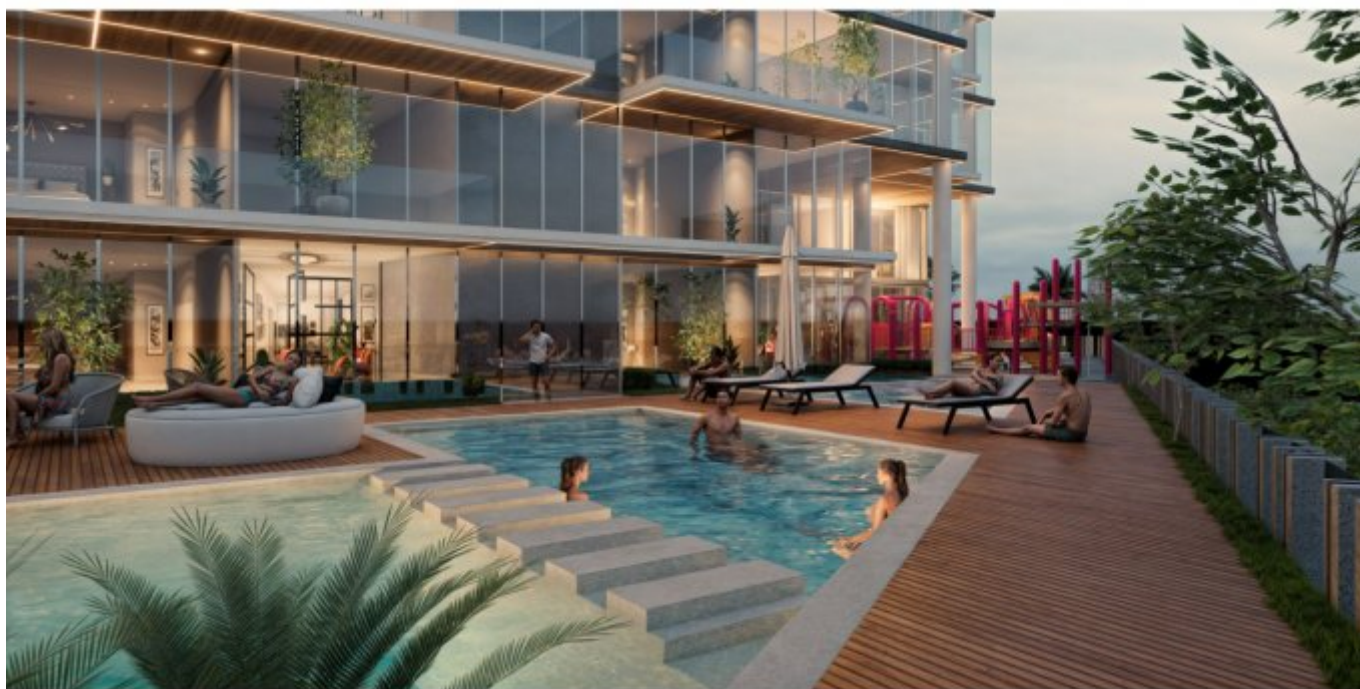


## Dubai, Seaside Living - Luxury Waterfront Homes for Sale



### Prices & Costs

Purchase Price	Price on request
----------------	------------------

### Details of the property

Rooms	6
Bedrooms	2
Bathrooms	5
Balconies	3
Condition of the property	First time use
old/new building	New building
Sale status	open

### Features

General categorization	Luxurious
Bathroom	Shower
Kitchen	Open
Kind of heating	Central
Air-conditioned	Yes
Elevator	Persons
furbished	fully

Cable / Satellite TV	Yes
Storage	Yes
senior-friendly	Yes

## Property description

Wake up every morning to the gentle sound of waves and sweeping sea views from your own balcony. These waterfront homes are designed for the discerning few who seek both luxury and tranquility. The property blends elegant interiors with modern amenities to create an extraordinary living experience. Each home features expansive floor plans, premium fixtures, and expansive windows that offer views of the Arabian Gulf. The open living areas seamlessly connect with private outdoor spaces, perfect for relaxing mornings with a cup of coffee or hosting evening gatherings under the stars. The beachfront homes combine sleek, contemporary design with a focus on comfort and relaxation. With spacious bedrooms, ample storage, and a state-of-the-art kitchen, each unit is tailored for modern living. The property also features high-end finishing, smart home integration, and sustainable living practices, ensuring that residents enjoy both luxury and efficiency. Whether you're enjoying an early morning swim in the pool, taking a stroll along the beach, or hosting guests in the lounge, every moment in this serene haven promises comfort, luxury, and convenience. With exceptional connectivity to Dubai's top attractions and prime locations, this property promises to be the ideal residence for those looking to experience the best of seaside living.

## Location

Dubai's iconic coastal neighborhoods are renowned for their combination of modern luxury and natural beauty. Situated along the Arabian Gulf, these properties offer breathtaking views of the sea and are complemented by year-round sunshine. The area boasts world-class amenities, including upscale dining, exclusive beach clubs, and easy access to major landmarks such as Dubai International Airport, Burj Khalifa, and Dubai Festival City. The serene yet vibrant community ensures a perfect balance of relaxation and urban convenience, making it a prime destination for luxury living.

## Features

These luxurious properties feature open layouts designed to maximize natural light and provide panoramic views of the ocean. With spacious living areas, private outdoor spaces perfect for outdoor gatherings, and elegant finishes, these homes are the epitome of comfort and sophistication. Enjoy easy access to a range of top-tier facilities such as beach clubs, gourmet dining options, and boutique shopping centers. The development also offers state-of-the-art fitness centers, yoga terraces, and a community pool area for residents to unwind and socialize. Additionally, the convenience of having shopping malls, entertainment venues, and schools within close proximity adds to the appeal of this waterfront living experience.

## Others

Disclaimer: plans, details and unit orientation included are indicative only and are subject to change by the developer/seller at its sole discretion without notice and/or liability. All images, including features, finishes, furnishings, view and scale are illustrative only. Final areas, orientation, dimensions, layout and materials may differ from those stated.

## Vendor

TANAMI PROPERTIES  
Al Marsa Street  
3405 Marina Plaza

Telephone main office

+971 4 248 3400

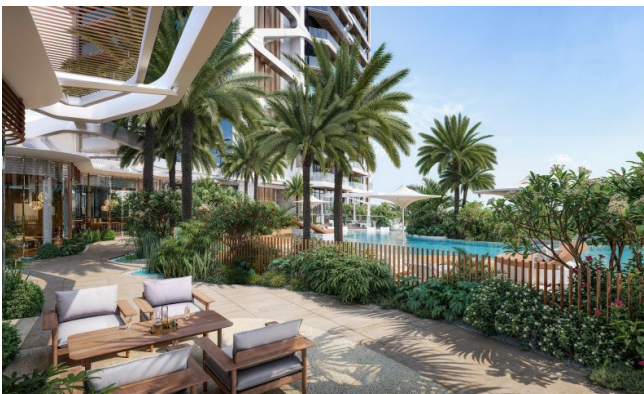
E-Mail

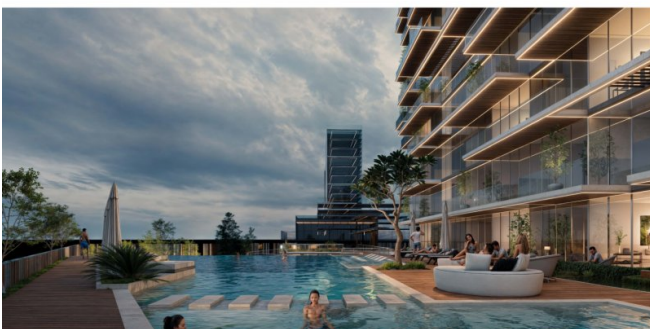
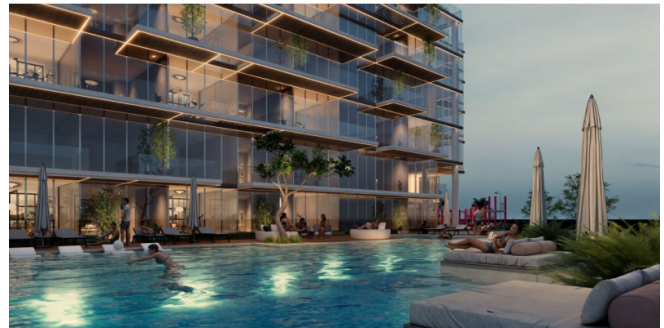
[office@ihr-makler.cc](mailto:office@ihr-makler.cc)

Website

[victoriacrigan@tanamiproperties.ae](mailto:victoriacrigan@tanamiproperties.ae)







COURT EXPERIENCE

Court Experience | Overview



IMTIAZ

Court Experience | COURT



IMTIAZ

Court Experience | Drop-off



IMTIAZ

Court Experience | RECEPTION



IMTIAZ

Court Experience | PARKING EXIT



IMTIAZ

Court Experience | Gym



IMTIAZ

Court Experience | Gym



IMTIAZ

Court Experience | Pathways & Landscape



IMTIAZ

Court Experience | Multi-purpose Hall



IMTIAZ



*Wynwood* - APPLIANCES  
1BHK TYPICAL APARTMENT UNIT

IMTIAZ  
DEVELOPMENTS



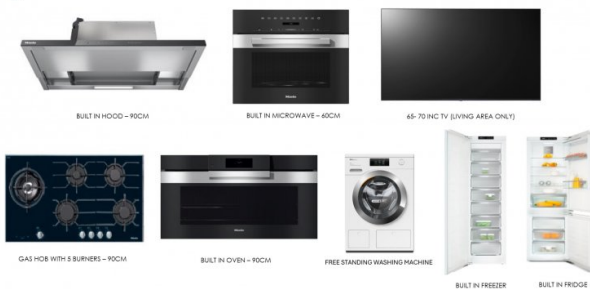
*Wynwood* - APPLIANCES  
2BHK TYPICAL APARTMENT UNIT

IMTIAZ  
DEVELOPMENTS



*Wynwood* - APPLIANCES  
3BHK TYPICAL APARTMENT UNIT

IMTIAZ  
DEVELOPMENTS



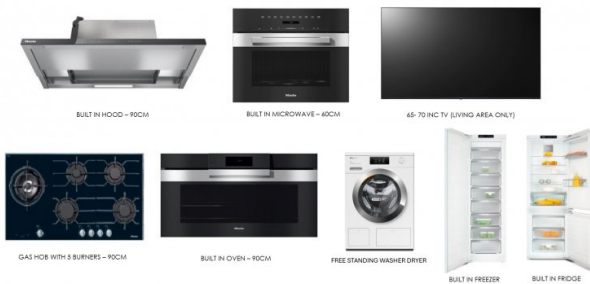
*Wynwood* - APPLIANCES  
3BHK DUPLEX PENTHOUSE

IMTIAZ  
DEVELOPMENTS



*Wynwood* - APPLIANCES  
4BHK DUPLEX PENTHOUSE

IMTIAZ  
DEVELOPMENTS



*Wynwood* - Typical Apartment Bathroom

IMTIAZ  
DEVELOPMENTS



LIKE A  
CONTEMPORARY  
WORK OF ART  
INVERSO BY GESSI

The use of warm colours in the bathroom recharges vital energy.  
Bronze projects wealth and refers to strength, growth and experience.  
It is a colour that is widely appreciated in interior design, in all its shades, as it is associated with the idea of warmth and allows for a cosy atmosphere with an unconventional touch to be created.

*Wynwood* - SANITARYWARE AND ACCESSORIES  
TYPICAL POWDER ROOM

**IMTIAZ**  
DEVELOPMENTS

