

2 BR B3A-N1 Dubai, Emirates Towers – Ultra-Luxury Serviced Residences

A REALM
OF LUXURY
IN LIVING
SPACES



Jumeirah Residences represent an ultra-luxurious and serviced residential development brand, offering a lifestyle defined by exclusivity, originality and sophistication. Jumeirah Residences have successfully introduced Jumeirah Residences Marsa Al Arab, a collaboration with Meraas, where opulent residences and the breathtaking allure of a waterfront location come to life. As architects of magnificent design and hospitality, Meraas and Jumeirah Residences will yet again leave an indelible mark on Dubai's skyline with Jumeirah Residences Emirates Towers.

Prices & Costs

Purchase Price	Price on request
----------------	------------------

Details of the property

Living space	128,86 m ²
Total area	142,29 m ²
Rooms	5
Bedrooms	2
Bathrooms	3
Size of balcony/terrace	13,43 m ²
Balconies	1
Condition of the property	First time use
old/new building	New building
Sale status	open

Features

General categorization	Luxurious
Bathroom	Shower, Bathtub
Kitchen	Fitted kitchen, Open
Kind of heating	Central

Air-conditioned	Yes
Elevator	Persons
furbished	fully
Cable / Satellite TV	Yes
Security features	Camera
Storage	Yes
senior-friendly	Yes

Property description

The residences feature a refined design with open-plan layouts that foster a sense of clarity and comfort. Each home is outfitted with state-of-the-art kitchens, complemented by premium finishes and integrated appliances. The spacious living areas flow seamlessly, offering a sophisticated yet warm atmosphere with caramel-toned accents, premium marble, and natural wood finishes. Every residence is designed to balance functionality and style, offering a peaceful retreat with breathtaking views of the city skyline. The towers are architectural masterpieces, perched on near-invisible stilts to provide panoramic views from Downtown Dubai to the open sea while maintaining complete privacy for every resident.

The arrival experience is grand, with a double-height lobby, tranquil garden courtyard, and elegant lounge areas. Top-floor sky terraces elevate daily life with a luxurious infinity pool, panoramic garden lounges, and expansive open-air event spaces. Personalized services, including spa treatments, personal trainers, concierge assistance, and private dining options, ensure that residents enjoy a lifestyle defined by luxury and convenience. Every detail is designed to offer a seamless living experience that blends iconic design with refined comfort.

Location

Set at the heart of Dubai's global business hub, these residences offer seamless access to Sheikh Zayed Road and Al Khail Road. Nearby attractions include City Walk, Downtown Dubai, J1 Beach, and cultural landmarks like the Museum of the Future and DIFC. This dynamic district hosts international institutions, world-class dining, and prestigious galleries, providing an unmatched lifestyle where business, culture, and leisure converge.

Features

Residents enjoy exclusive access to sky pools, adults-only infinity pools, panoramic garden lounges, and private event terraces suspended above the city. A rejuvenating spa, fully equipped gym, yoga and spinning studios, and a wellness club with sauna and nail studio provide wellness options. Additional amenities include private dining rooms, a branded fine dining restaurant, co-working lounges, a private cinema, children's play areas, paddle courts, and multi-purpose event spaces, all designed to enhance everyday living.

Others

Disclaimer: plans, details and unit orientation included are indicative only and are subject to change by the developer/seller at its sole discretion without notice and/or liability. All images, including features, finishes, furnishings, view and scale are illustrative only. Final areas, orientation, dimensions, layout and

materials may differ from those stated.

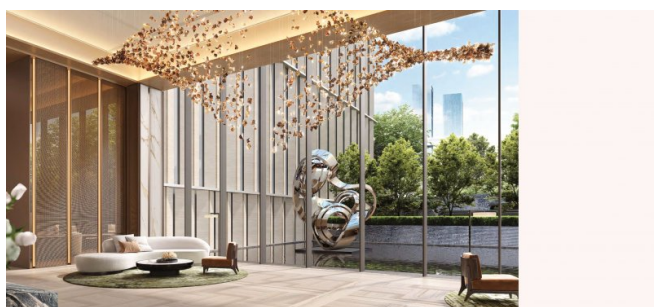
Address

Emirates Tower

Vendor

TANAMI PROPERTIES
Al Marsa Street
3405 Marina Plaza

Telephone main office	+971 4 248 3400
E-Mail	office@ihr-makler.cc
Website	victoriacrigan@tanamiproperties.ae



LOBBY

A sense of grandeur greets you the moment you arrive. The double-height lobby, tranquil garden courtyard, and elegant lounge set the tone for a lifestyle shaped by refinement.

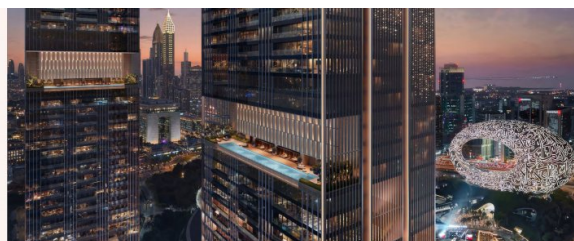
34

LEADERS IN GLOBAL HOSPITALITY



Jumeirah Hotels and Resorts have been at the forefront of global hospitality for over two decades. They proudly stand as the creators of internationally iconic properties such as Jumeirah Burj Al Arab and Jumeirah Marsa Al Arab in Dubai, Jumeirah Ohlalah Island in the Maldives, and Jumeirah Capri Palace in Italy, to name just a few.

04



BUILT FOR SUCCESS

Set next to the heart of global business in Dubai, Jumeirah Residences Emirates Towers stand as the new architectural icons on the city's skyline.

This exclusive collection of residences offers one- to four-bedroom apartments, where every detail reflects thoughtful craftsmanship and refined living.

From sky pools to Jumeirah Signature Services, each element is designed to elevate the daily experience of discerning residents.

09





