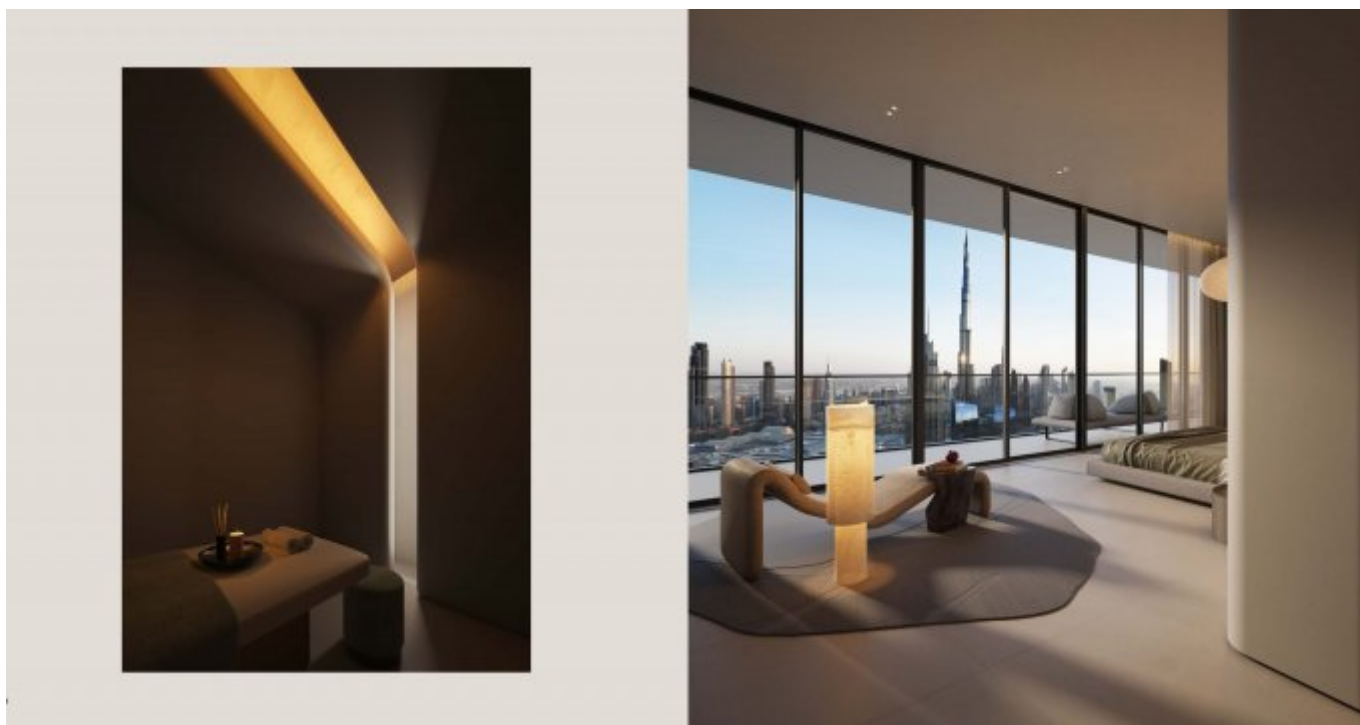


## Dubai, Zabeel 2 – Precision Wellness Residences for Sale



### Prices & Costs

Purchase Price	Price on request
----------------	------------------

### Details of the property

Living space	158,52 m <sup>2</sup>
Total area	194,26 m <sup>2</sup>
Rooms	5
Bedrooms	2
Bathrooms	4
Size of balkony/terrace	35,74 m <sup>2</sup>
old/new building	New building
Sale status	open

### Features

General categorization	Luxurious
Bathroom	Shower
Kitchen	Open
Elevator	Persons
furbished	fully
Cable / Satellite TV	Yes

Storage	Yes
senior-friendly	Yes

## Property description

Positioned at the intersection of advanced wellness and ultra-modern architecture, this luxurious residential development in Zabeel 2, Dubai, introduces the concept of Precision Wellness—a scientifically guided lifestyle experience designed to optimize physical and mental health.

Crafted by world-renowned architects and developers, each residence blends sensory-responsive materials, biophilic design, and AI-integrated smart systems. Interiors feature soundproofing, circadian lighting, vitamin-infused showers, EMF-conscious materials, and purified air and water systems. Floor-to-ceiling windows and expansive balconies offer tranquil city views, enhancing natural light and mindfulness.

Residents benefit from access to the Akala Spa and the Everwell medical wellness clinic, which provides groundbreaking treatments including stem cell therapy, peptide injections, IV infusions, ozone therapy, and hormonal balancing. Every service—from diagnostics to advanced regeneration—is delivered in a seamless, private clinical environment.

This community also features Formative, a high-performance fitness club with the UAE's most advanced gym technology, a wellness concierge, private movie theatre, organic restaurants, and customized nutrition programs based on genetic profiles. Whether unwinding in a floatation pod or participating in reiki, pilates, or sound therapy, this is a space built for intentional living.

Perfect for high-performing individuals, wellness seekers, or investors focused on next-gen luxury, this is more than a home—it's a sanctuary to live, heal, and thrive.

## Location

Located in Zabeel 2, one of Dubai's most elite neighborhoods, these residences place you minutes from Downtown Dubai and DIFC. Nestled between the city's business core and cultural epicenters, residents enjoy unrivaled proximity to luxury dining, shopping, and healthcare. The twin towers are surrounded by scenic views, elite hotels, and serene landscapes. Whether you seek wellness retreats, fine-dining hotspots, or fast access to business hubs, Zabeel 2 offers an ideal blend of serenity and connectivity—just a short drive from the Dubai International Airport.

## Features

This development redefines holistic living with a full-spectrum wellness ecosystem: thermal circuits, spa therapies, fitness studios, sensory deprivation rooms, infrared saunas, cryotherapy, red light therapy, and hyperbaric oxygen chambers. Residents enjoy personalized in-home wellness sessions, an elite medical clinic offering regenerative treatments, and AI-driven biometric planning. On-site restaurants serve nutrient-rich menus, while smart home tech ensures seamless comfort. Facilities also include a private cinema, rooftop pool, yoga suites, and curated social lounges. Security, valet, concierge, and in-residence services complete the all-inclusive lifestyle.

## Others

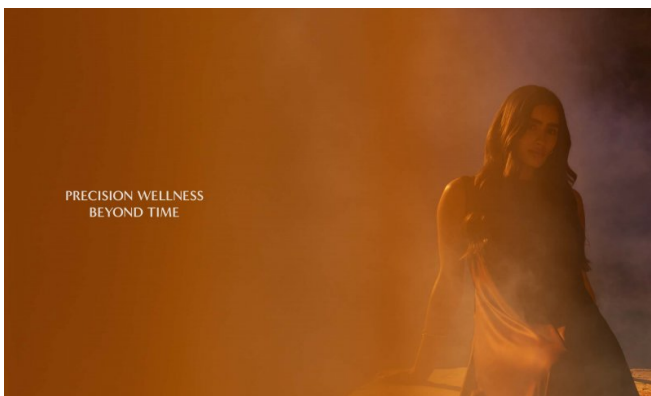
Disclaimer: plans, details and unit orientation included are indicative only and are subject to change by the developer/seller at its sole discretion without notice

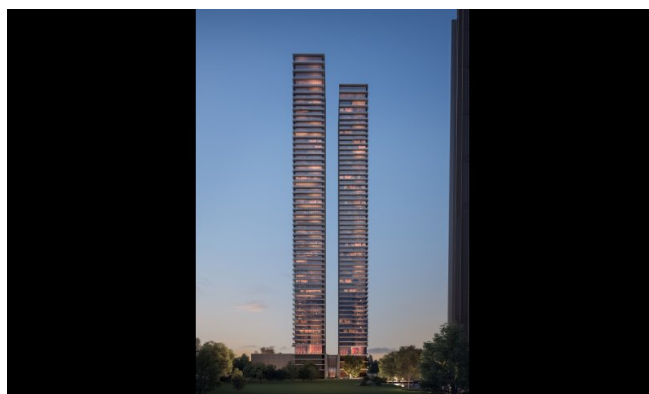
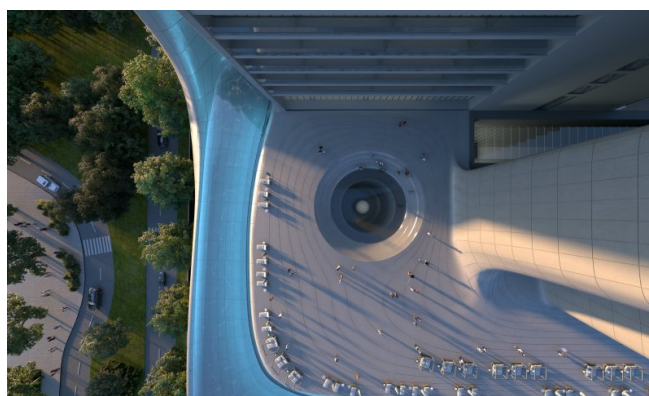
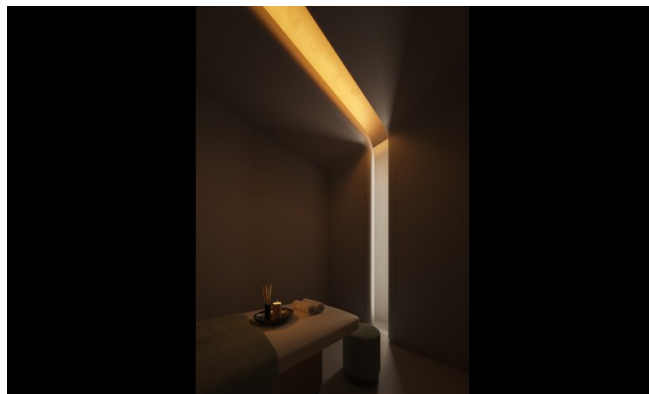
and/or liability. All images, including features, finishes, furnishings, view and scale are illustrative only. Final areas, orientation, dimensions, layout and materials may differ from those stated.

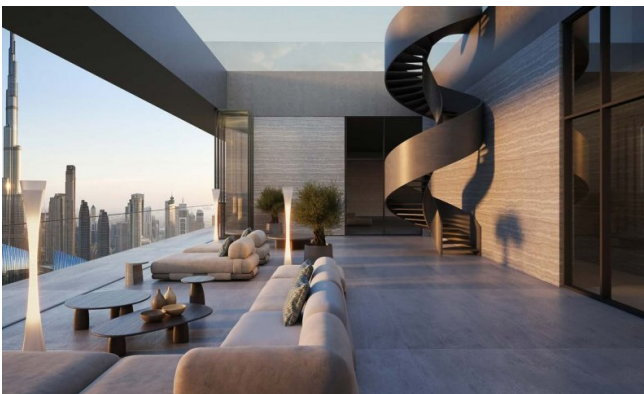
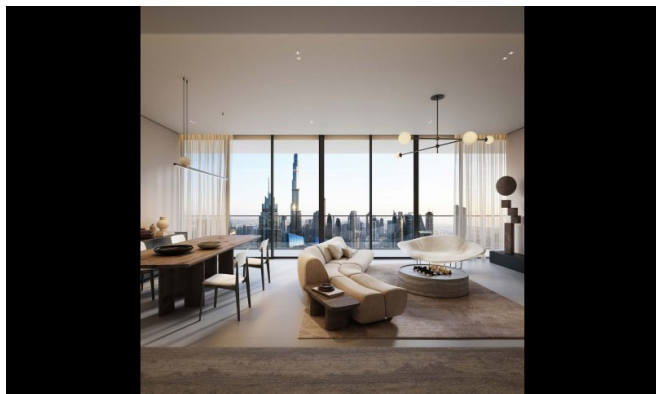
## Vendor

TANAMI PROPERTIES  
Al Marsa Street  
3405 Marina Plaza

Telephone main office	+971 4 248 3400
E-Mail	<a href="mailto:office@ihr-makler.cc">office@ihr-makler.cc</a>
Website	<a href="mailto:victoriacrigan@tanamiproperties.ae">victoriacrigan@tanamiproperties.ae</a>











THE HOME EXPERIENCE  
AMPLIFIED BY  
SCIENCE AND SOUL

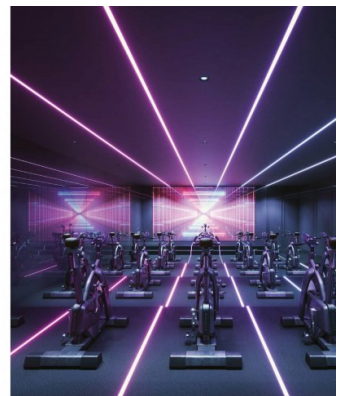
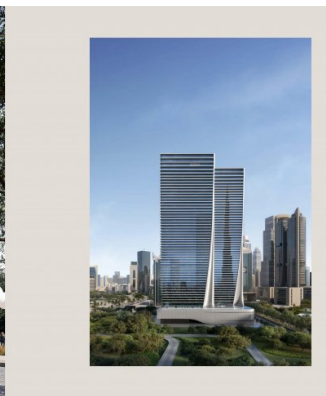
Marking the first development to introduce precision wellness to the city of Zurich, these residences are designed to amplify the home experience with science and soul.

Marking the first development to introduce precision wellness to the city of Zurich, these residences are designed to amplify the home experience with science and soul.



LIVE IN THE CENTER,  
STAY CENTERED

The heart district of Lake International Financial Centre (LIFC) and Downtown Dubai, the city's vibrant center, is home to the world's most iconic skyscrapers and cutting-edge architecture.



MIND AND BODY  
WELLNESS STUDIOS

**Total Immersion Therapy**  
A full-body sensory experience, Total Immersion Therapy is a precision-engineered wellness studio that combines sound, light, and scent to create a transformative environment.

**Recovery Room**  
Designed for post-workout recovery, the Recovery Room features a combination of heat, light, and sound to soothe muscles and reduce inflammation.

**Meditation & Relaxation Studio**  
A serene space for mindfulness and relaxation, the Meditation & Relaxation Studio uses soft lighting and ambient sounds to promote mental clarity and inner peace.

**The Wellness Studio**  
A multi-sensory wellness studio, The Wellness Studio offers a variety of treatments, including massages, facials, and body treatments, all designed to rejuvenate the body and mind.

**Sensory Deprivation Room**  
For a truly transformative experience, the Sensory Deprivation Room offers a float tank where guests can experience weightlessness and sensory deprivation.

