

Ras Al Khaimah, Al Marjan Island - Luxury Living with Panoramic Sea Views



Prices & Costs

Purchase Price	Price on request
----------------	------------------

Details of the property

Living space	180,47 m ²
Total area	425,14 m ²
Rooms	6
Bedrooms	3
Bathrooms	4
Size of balkony/terrace	244,67 m ²
Balconies	5
Condition of the property	First time use
old/new building	New building
Sale status	open

Features

General categorization	Luxurious
Bathroom	Shower
Kitchen	Open
Air-conditioned	Yes

furnished	fully
Cable / Satellite TV	Yes
Storage	Yes
senior-friendly	Yes

Property description

Fashion TV Acacia by Conin International stands as an epitome of luxury and style on Al Marjan Island, Ras Al Khaimah. This architectural masterpiece harmonizes nature's beauty with cutting-edge design, offering residents an exclusive living experience. With panoramic sea views and lush landscaped courtyards, each residence has been carefully crafted to elevate the senses. The interiors reflect a seamless fusion of fashion, architecture, and modern sensibilities, where every detail exudes elegance. Each residence at Acacia is a sanctuary of refined living, offering a curated blend of comfort and style. The fashion-forward design offers tailored finishes and trend-inspired elements, making every corner of the home a testament to opulence. Whether it's the spacious living areas, the stylishly appointed bedrooms, or the luxurious bathrooms, Acacia ensures that elegance is woven into every space.

The property's layout is designed with a thoughtful focus on privacy and connectivity with nature. The northeast corner features a swimming pool connected by a stunning bridge to the main tower, and the top floors house a state-of-the-art gym with uninterrupted views of the sea. The ground level is a true reflection of high-end living, with terraces and expansive water features designed to foster an environment of connection, calm, and celebration.

Acacia's architectural style merges clean lines with abundant natural light, ensuring the home feels airy and open. The meticulous planning extends to its integration with the surrounding natural environment, offering residents the luxury of both seclusion and convenience. The infinity pool, lush gardens, and family-friendly spaces invite relaxation and social interaction. For those who appreciate the beauty of nature, Acacia offers a truly unique living experience.

Whether you're indulging in a meal under the stars, soaking in the views from your terrace, or unwinding at the beach, Fashion TV Acacia is designed for those who seek both elegance and functionality.

Location

Nestled on the pristine shores of Al Marjan Island in Ras Al Khaimah, Fashion TV Acacia offers a lifestyle where modern luxury meets nature. This prestigious location is surrounded by world-class resorts, tranquil beaches, and unparalleled sea views. With proximity to Rixos Bab-al-Bahr and the Al Hamra Mall, residents enjoy seamless access to premium amenities, dining, and entertainment options. Whether you are taking a stroll along the beach or enjoying the expansive views from your terrace, Al Marjan Island provides the perfect backdrop for a life of sophistication and serenity.

Features

Fashion TV Acacia features an array of luxurious amenities designed to elevate your lifestyle. Residents can indulge in an infinity swimming pool, a dedicated kids' play area, and landscaped gardens that offer a serene environment. The state-of-the-art gym overlooks panoramic views of the Arabian Gulf, inspiring every workout. The property also boasts barbecue zones, family seating lounges, and a café & signature restaurant for dining with a view. For those seeking relaxation, the viewing deck and

water features provide the perfect escape. Acacia's thoughtful design ensures every amenity serves both functional and aesthetic purposes.

Others

Disclaimer: plans, details and unit orientation included are indicative only and are subject to change by the developer/seller at its sole discretion without notice and/or liability. All images, including features, finishes, furnishings, view and scale are illustrative only. Final areas, orientation, dimensions, layout and materials may differ from those stated.

Vendor

TANAMI PROPERTIES
Al Marsa Street
3405 Marina Plaza

Telephone main office

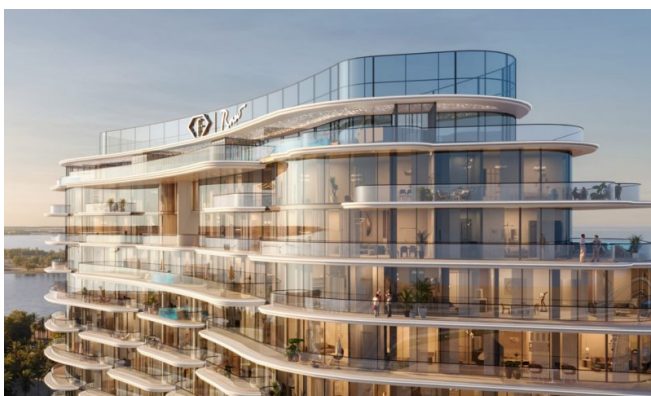
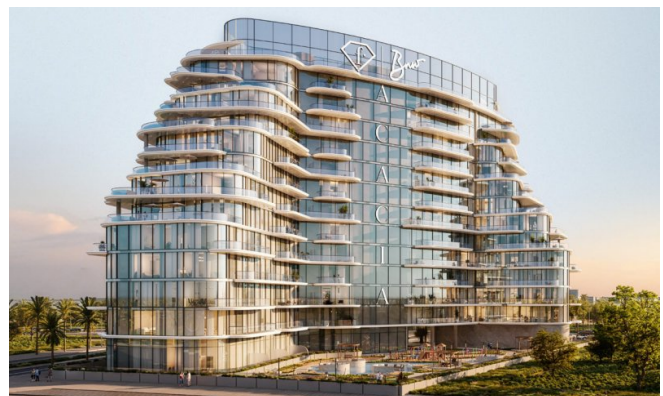
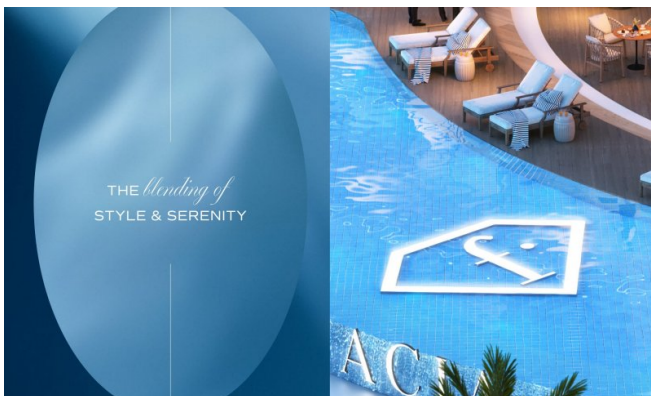
+971 4 248 3400

E-Mail

office@ihr-makler.cc

Website

victoriacrigan@tanamiproperties.ae





A SYMPHONY OF *green & grace*

A striking entrance flanked by tree-lined boulevards sets the tone for what lies ahead: terraces that open to ocean vistas, signature interiors styled with precision, and spaces that inspire connection, calm, and celebration.



ISLAND *living* REDEFINED BY DESIGN

At Acacia, every element has been envisioned to elevate your everyday. The architectural philosophy, crafted by Comin International, celebrates clean lines, natural light, and spatial elegance, creating a living experience that feels both intentional and effortless.

The northeast corner hosts a swimming pool, perched above a premium restaurant and connected by a stunning bridge to the main tower. Above, a state-of-the-art gym awaits, where views of the sea inspire every stretch and stride.



CENTRAL *but* UNORDINARY

To the southwest, a lush landscape unfolds, designed to soothe and mesmerise. Whether you're gazing at the gardens or soaking in the skyline, Acacia ensures that nature is never out of reach.

Acacia's address on Al Marjan Island places you at the heart of Ras Al Khaimah's most prestigious coastal enclave. Surrounded by luxury resorts, entertainment zones, and tranquil beaches, it is a destination where life moves at your pace.



the AMENITIES

- Infinity Swimming Pool
- Kids Pool & Play Area
- State-of-the-Art Gymnasium
- Cafe & Signature Restaurant
- Viewing Deck & Water Features
- Barbeque Zones & Fire Pit Corners
- Lush Landscaped Gardens
- Family Seating Lounges




A LIFE *that defines* INDULGENCE

Acacia is a universe of its own, where everyday life is infused with leisure, wellness, and elegant indulgence. Each amenity is designed not just to serve a purpose, but to elevate your lifestyle. Whether you're soaking in the sun, sharing a meal under the stars, or watching your little ones play, Acacia wraps every experience in warmth, elegance, and care.



the PRIME VICINITIES

- 06 Minutes Al Marjan Island Boulevard
- 06 Minutes Rixos Bab-al-Bahr Resort
- 07 Minutes Wynn Resort
- 11 Minutes Al Hamra Mall
- 11 Minutes Waldorf Astoria Hotel
- 11 Minutes RAK Central
- 13 Minutes Al Hamra Golf Club
- 13 Minutes Al Hamra Village
- 16 Minutes Cosmo Health Center
- 16 Minutes Dreamland Aqua Park
- 20 Minutes Royal Yacht Club, RAK
- 25 Minutes The Ritz-Carlton, RAK

ACACIA

AL MARJAN ISLAND

34 Minutes RAK Airport

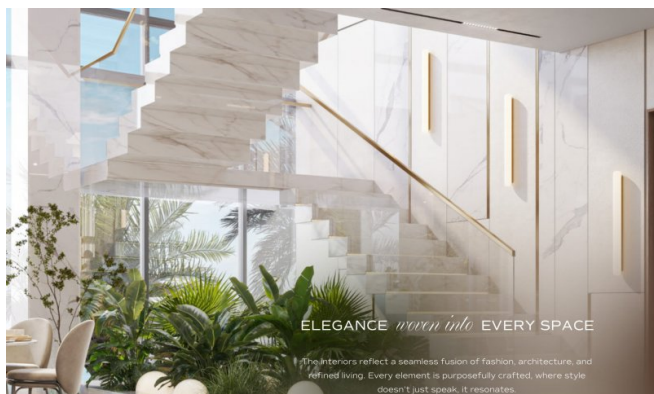
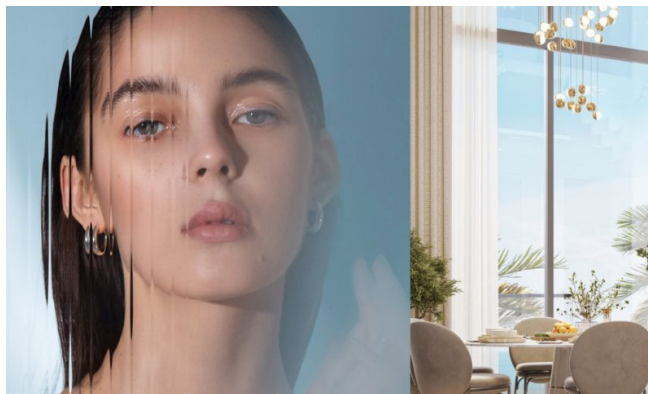
56 Minutes Dubai International Airport

90 Minutes Al Maktoum International Airport



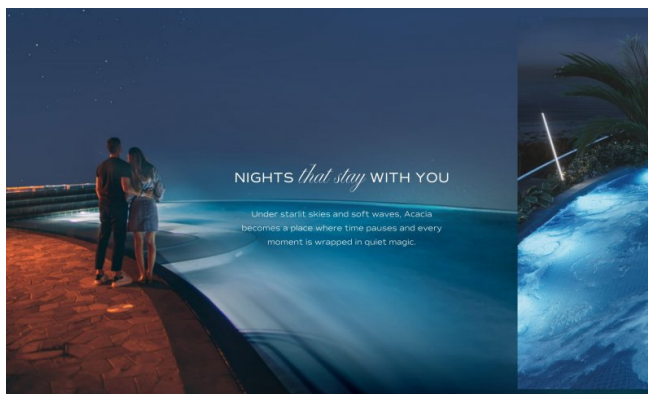

A STATEMENT *in every* SQUARE FOOT

Designed by the award-winning minds at Conin International, Acacia is a modern marvel that rises gracefully over 59.2 meters with a distinctive form: 2 Basements + Ground + 12 Floors + Lower Roof + Upper Roof. The façade plays with proportion, light, and shadow, embracing both ocean and landscaped views across its thoughtfully oriented wings. Natural ventilation, abundant daylight, and strategic planning ensure a harmonious rhythm to everyday living.



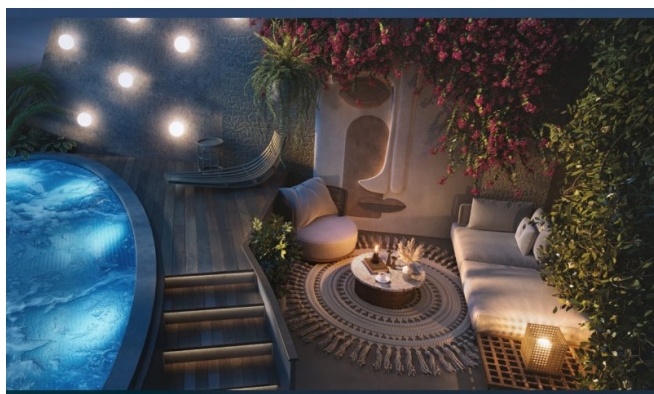
ELEGANCE *woven into* EVERY SPACE

The interiors reflect a seamless fusion of fashion, architecture, and refined living. Every element is purposefully crafted, where style doesn't just speak, it resonates.



NIGHTS *that stay* WITH YOU

Under starlit skies and soft waves, Acacia becomes a place where time pauses and every moment is wrapped in quiet magic.



DESIGNED *to BREATHE and* BLOOM

Acacia's spatial planning is more than just architecture, it's a philosophy of flow. Each floor is designed to optimize movement, privacy, and visual connectivity with the surrounding landscapes.



THOUGHTFUL *design, SEAMLESS* living

With purposeful planning for natural light and ventilation, Acacia is designed to breathe. High-speed elevators ensure smooth vertical movement, while intelligently zoned layouts create fluid transitions between social and private spaces.

Terraced heights enhance visual openness, and landscaped courtyards between wings encourage quiet connections with nature. Every element reflects thoughtful architecture, crafted for refined living, delivered with intentional grace.





